



# The Granite Belt Naturalist



**Mail Address:** Stanthorpe Field Naturalist Club Inc, PO Box 154, Stanthorpe Qld. 4380  
fieldnats@granitenet.com.au

Web site <https://mysd.com.au/fieldnats/>

## AIMS OF THE CLUB

1. To study all branches of Natural History
2. Preservation of the Flora and Fauna of Queensland
3. Encouragement of a spirit of protection towards native birds, animals and plants
4. To assist where possible in scientific research
5. To publish a monthly newsletter and post it to members



The Pyramids, Girraween National Park

**Meetings:** 4th Wednesday of each month at  
Uniting Church, Small Hall, 113 High Street  
Stanthorpe at 7.30pm

**Outings:** The Sunday preceding the 4<sup>th</sup> Wednesday  
of each month

**Subs:** Single \$20.00, Family \$30.00 per annum, July  
to June

## CLUB OFFICE BEARERS – 2020/2021

President	Peter Haselgrove	46837255
Vice-presidents	Kris Carnell	46835268
	Leon McCosker	46811737
Secretary	Lyn Collins	0428810156
Treasurer	Gunter Maywald	46810674
Newsletter Editor	Margaret Carnell	46835268
Publicity Officer	K & M Carnell	46835268
Librarian	Laura Maywald	46810674

The Club thanks the Queensland Country Credit  
Union for  
their donation that enabled us to buy a printer.

Stanthorpe Field Naturalists is a group member of  
Granite  
Borders Landcare.

Management Committee: President, Vice-  
Presidents, Secretary, Treasurer



**SCALE OF DIFFICULTY FOR WALKS**  
**ON NATS OUTINGS**

1. Flat, well-formed track, no steps, 5km or less. Clearly signposted. Suitable for wheelchairs with assistance.
2. Formed track. May have gentle hills and some steps. Clearly signposted. No experience required
3. Formed track, some obstacles, 20km or less. May have short steep hills and many steps. Some experience recommended.
4. Rough Track. May be long and very steep with few directional signs. For experienced bushwalkers.
5. Unformed track. Likely to be very rough, very steep and unmarked. For very experienced bushwalkers with specialised skills.

**Coming Up**

Saturday & Sunday 23<sup>rd</sup> & 24<sup>th</sup> July:  
Camp Out at *Glenrock Reserve*.  
Leaders: Rob & Trish McCoskere  
Wednesday 27<sup>th</sup> July: AGM Program:  
*Remember Last Year.*

**Deadline for next newsletter**  
**11<sup>th</sup> August 2022**

**14-Wire Fence**

Peter's presentation at the June meeting was about his discovery of the historic 14-wire fence in the district. He gave a short summary of his locating this fence in various places and followed with a short slide show.

He told us how he found sections of the fence around the traprock in the Stanthorpe Shire and the gradual realization that the sections all added up to approximately 250km that appeared to follow the boundaries of the old runs.

He showed photos of sections of the actual fence including detail of the intricate lacing and the rough country it traversed. Peter showed us a Shire map where he had drawn the sections of the fence remaining up to the year 2000 and an 1872 map of the old run boundaries for comparison.



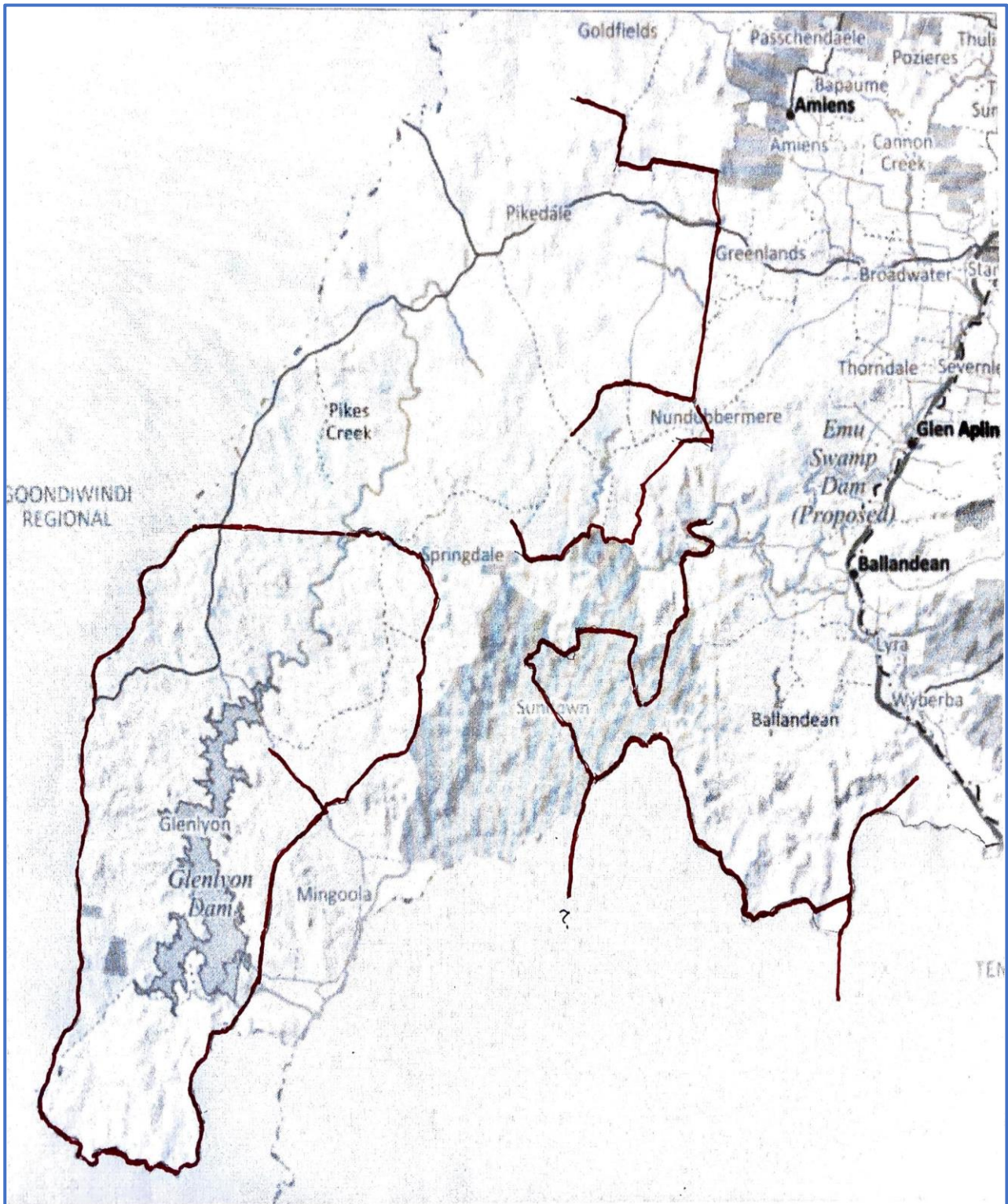
**Left:** This one shows all the holes bored in the fence posts and droppers as well as the lacing. Note all of the fences have had wire netting put on the fences at some future date, possibly the late 1800's.

**Right:** This is how the ties were done





Map showing 14 Wire Fence



**Annual General Meeting**

**Wednesday 27<sup>th</sup> July 2022**

***Remember Last Year***

**Followed by Supper – Please bring a plate**

**Subs are now due. The form will be emailed separately**

**Pre-outing Report - Campout to Glen Rock State Forest 23<sup>rd</sup> - 24<sup>th</sup> July**

The Glen Rock State Forest lies within the valley of the Blackfellow Creek with steep ranges rising on either side. Prominent peaks of Mount Philp 910m and Glen Rock to the north east and Mount Machar at 932m to the south west provide dramatic scenery from the valley floor at about 300m altitude. The State forest is in the rain shadow of the Mistake Range and so is much drier than the Main Range, however on our pre-outing trip Blackfellow Creek had a good flow of sparkling clear water making the drive in very scenic as the road crosses the creek ten times between Junction View and the Casuarina Campground. The walks we did also crossed the creek, but with no bridge, so be prepared to remove footwear, or bring a pair of water shoes or sandals and carry a walking pole to assist paddling over the stony creek bed if we decide to undertake these walks.

The drive from Stanthorpe will take 2.5 – 3hours if you stop at the Norm Goltz Park at Junction View (with toilets) for a cuppa on the way, as we did, then continue to Glen Rock. After lunch we plan to do a walk to be decided on the day. On Sunday we will do another walk in the morning then return to camp for lunch and meet day trippers. We will pack up camp and drive to the Norm Goltz Park where we will car pool to drive to the Aboriginal engravings, which has limited parking and little room to turn trailers. After examining the rock engravings and discussing the nearby Chalk Mine we will then head home.

People intending to attend the outing must book their own campsite and register with me so I can advise any changes of plans. This includes Sunday Day Trippers.

There is no mobile phone coverage at the campsite.

Contact me on [mccoskerr@gmail.com](mailto:mccoskerr@gmail.com) Phone 46835371, phone/text 0410024383

*Rob McCosker*

**Outing Report to Everest Road Flora & Fauna Reserve, Warwick, on 19 June**

After leaving a cool but calm Stanthorpe morning, we arrived at a very windy Australiana Park in Warwick, where we joined Errol, Annette, and David for morning tea. There were 10 of us who then went on to the Reserve, where we spent some time looking at plants and identifying a number of them.

The first thing we noticed when we entered the reserve were large heaps of mulch to spread around new



Pandorea pandorana

plantings and an excellent interpretive sign. There was a coffee bush (*Breynia oblongifolia*) close to the entrance with a few berries on it, that caused a lot of interest, as



Coffee Bush



well as an *Acacia* in flower. As we moved slowly along the paths, we kept stopping to look at interesting plants, including a *Pandorea pandorana*. There were some weeds, including *Zinnias*, Prickly Pear, Lantana and a *Senecio* that may have been fireweed. Several interesting grasses were growing in the lower story, one of them a rat's tail grass.

A little shrike thrush and a rufus fantail were seen and a silver eye heard. As we headed back to the entrance, we noticed a willie wagtail who was joined by a flock of yellow-rumped thornbills and a grey fantail. A small yellow butterfly and a small blue butterfly were feeding on some of the flowering weeds. The rocks in this area were sandstone.

An old tractor and some old farm implements in a yard near the reserve, caused quite a bit of interest and discussion.

Then out to Leslie Dam where we had lunch, followed by a walk up to the dam wall. It was nice to see the dam full, but greeting us was a sad sight of hundreds of dead fish floating up against the wall. Lock Wilson has since spoken to a member of the Warwick fishing club, who told him the fish kill in Leslie dam was due to a sudden cold snap that caught the fish in the shallow parts of the dam. Another possible reason is that blue/green algae is toxic to some fish.



Leon and Peter discussing a *Senecio*

As we travelled towards Leslie Dam several more birds were seen, including galahs, pee wee, Pacific black duck, crested pigeons, magpies and a flock of ibis sharing a paddock with a flock of motley-coloured sheep. There was still shallow water over the road in two or three places, several weeks after heavy rain that caused flooding in some parts of Warwick.

Noisy Miners were making a din in the trees above us as we had lunch and Musk Lorikeets were feeding in the flowering gum trees. A Grey Goshawk glided overhead and Red-rumped Parrots were also seen. At the dam there were Pied Cormorants, a Pacific Heron, a White-faced Heron, a Medium Egret and a Large Egret. Most of the Nats went to investigate a patch of hoop and bunya pines that were growing near a granite outcrop.



Echidna trying to hide

On the way home there was more of interest to see. An echidna crossed the road in front of Lyn's car and waddled into the grass at the roadside. Then a grey kangaroo went leaping across into the paddock. Further on there were masked lapwings (I still call them plovers), and cattle egrets accompanying horses and cows.

*Lyn Collins and Margaret Carnell*

### Frog Hotel

It started off as a project for my four year old son but ended up my hobby. I made a frog habitat with some tubs filled with rocks, water plants and several old PVC pipes of different sizes. I added solar lights which attracted insects (frog dinner) at night.

It only took about a day before the first frog moved in, and it has very popular since. The rainy weather has certainly helped the success of the hotel I'm sure.

The species that have visited, or live permanently, at the hotel are:

*Litoria fallax* Eastern Dwarf Tree Frog

*Litoria peronii* Peron's Tree Frog

*Litoria Dentata* Bleating Tree Frog

*Litoria verreauxii* Whistling Tree Frog

*Platyplectrum ornatum* Ornate Burrowing Frog

*Crinia signifera* Common Eastern Froglet



The Whistling Tree Frogs really took advantage of the water tubs with about five males calling all night every night. They are incredibly loud for a small frog (up to three cm in size) and are actually painful to the ear if you stand next to them while they call.

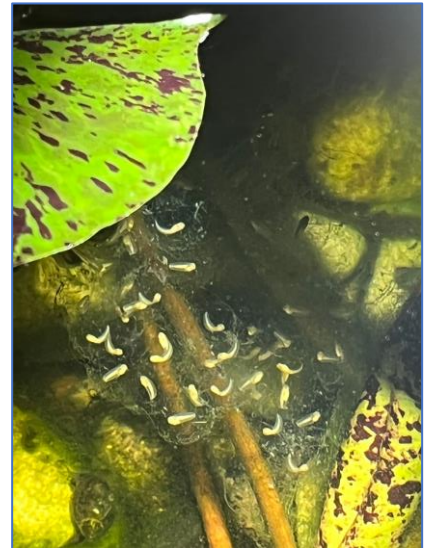
The female Whistling frog was obviously quite impressed with her suiters because one morning I came out to find about three or four hundred eggs in the ponds. It was very exciting!

The tadpoles hatched within a few days to two weeks, and now it is a bustling tadpole nursery.

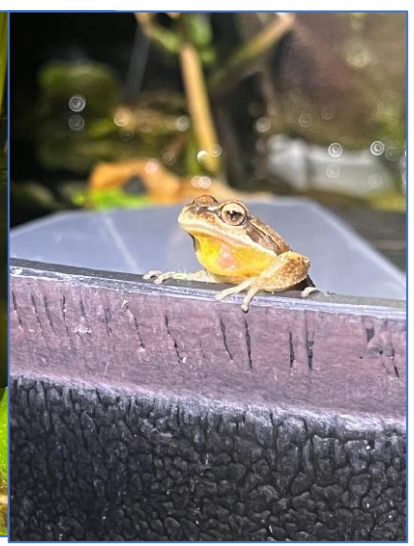
An app that I have found invaluable is the Frog ID app. It has pictures, descriptions and call recordings of all Australian Frogs, and you can also record a frog and send it in for identification.



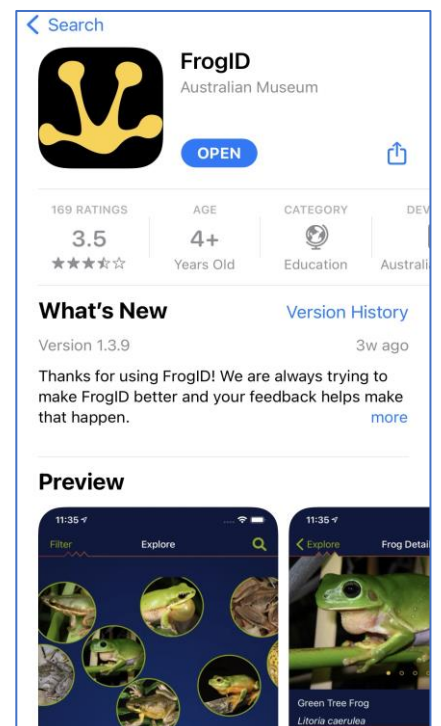




From Eggs to Tadpoles



Frogs Galore



**Minutes of General Meeting  
Stanthorpe Field Naturalist Club Inc.  
22nd June 2022**

**Meeting opened:** 7:30 pm

**Attendance and Apologies:** as per Attendance Book

**Minutes of the previous meeting (amended):**

Confirmed Lyn seconded Lynette carried

**Business arising from the minutes:**

New Executive – Peter reminded members of the AGM next month, and to consider taking on a committee position.

Monthly Meetings – There was further discussion about reducing the number of meetings and outings to either every second month, or held monthly in the warmer months, e.g. Feb, March, April, May and Sept, Oct, and Nov, with a break in winter. Hopefully a decision will be made in the near future by the new committee to be elected in July.

**Correspondence:** .read as per folder

moved Lyn seconded Teresa carried

**Financial Report:** Peter presented the Treasurer's Report on Gunter's behalf.

Current account balance is \$2,060.24, with Petty Cash of \$102.25, making \$2,162.49.

moved Peter seconded Holly carried

**Outing Report:**

The June outing was to Everest Road Flora & Fauna Reserve in Warwick, and then on to Leslie Dam. A full report will be in the newsletter.

**Pre-outing:**

Glen Rock State Forest campout.– 23 & 24 July, about a 2 hour drive from Stanthorpe. Rob urged anyone interested to make their own booking on the website, or seek accommodation at Gatton. More information will be in the newsletter.

**General Business:**

The next meeting will be the Annual General Meeting, after which date fees will be due.

**Specimens:** Photos of mystery cocoons from Lock, which will also be in the newsletter.

**Next Meeting:** 27th July - AGM

**Meeting closed:** 7:45 pm

**Presentation:** Peter's presentation was about his discovery of the 14-wire fence in the district. He gave a short summary, together with a slide show, of his locating this fence in various places, and the gradual realization that the sections all added up to about 250km, that appeared to follow the boundaries of the old runs. Read more in the newsletter.



# SPOTTINGS



These are some pics of luminous fungi that I found off diamond vale road and then went back in the night to photograph. The final photo has not been edited in anyway and is the true colour. *Holly Patti*



Nats looking at dead fish (below) in Leslie Dam



**Left:** Lock Wilson showed this photo of a mystery cocoon at the meeting

