



QNC NEWS

Newsletter of the
QUEENSLAND NATURALISTS' CLUB INC.

No. 360 Jan-Feb 2022

www.qnc.org.au

Print Post Approved: 100003858

CONTENTS

General Information	P.2
General meetings	P.2
Upcoming Excursions	P.5
Past Excursion Reports	P.11
Items of Interest	P.13
Subscription Form	P.16

PROGRAMME JAN-FEB 2022

General Meetings: Please register at meetings@qnc.org.au or phone Mike on 0434 148 170
No meeting in January

Monday, 21 February - includes 2022 AGM

Speaker: Ross Coupland

Topic: Living sticks, highlighting phasmid diversity in Southeast Queensland

Excursions: Please register at excursion@qnc.org.au

January Goomburra Base Camp, Main Range National Park

February Night field trips with Ross Coupland – see p4 for details

CLUB CONTACT DETAILS

Mailing address: PO Box 5663, West End, QLD 4101

President:	Mr Ron Carr	Ph: 0421 382 500	president@qnc.org.au
Secretary:	Ms Judy Haines	Ph: 0402 236 359	secretary@qnc.org.au
Treasurer:	Mr Mike Anderson	Ph: 07 3263 4502	treasurer@qnc.org.au
Excursion Secretary:	Mr Barney Hines	Ph: 07 3720 9414	excursion@qnc.org.au
QNC News Editor:	Dr Annette Neill	Ph: 0427 369 730	news@qnc.org.au

The Queensland Naturalist is published twice per year, send articles to the Editor:

Dr Peter Woodall at journal@qnc.org.au

If you receive a paper copy of the newsletter, switch to receive the coloured email edition by contacting Mike (treasurer@qnc.org.au) to update your details.

GENERAL INFORMATION

Website

QNC is currently working on a project to revise and update our website. Watch this space for more details as they become available <https://www.qnc.org.au/>

Facebook

Follow our Facebook page for titbits about the natural world, to find out what we've been up to and for information on upcoming events. Share our page with your friends and families and contact Leith (librarian@qnc.org.au) if you have information we could post. You do not have to be a member of Facebook to see what we publish, and you don't have to divulge any private information.

Library Catalogue

The library catalogue can be found on the QNC website at [http://www.qnc.org.au/Library/QNC LibraryCatalogue.pdf](http://www.qnc.org.au/Library/QNC%20LibraryCatalogue.pdf)

Subscription Reminder

Any 2021/22 subs due on 1 July 2021 not paid by 31 December 2021 will lead to automatic removal from the mailing lists. The envelope in which the QNC News is posted will show the subscription currency on the address label or check with the Treasurer on treasurer@qnc.org.au.

COVID-19

COVID guidelines

- ❖ Please register for all meetings by email to meetings@qnc.org.au or phone Mike on 0434 148 170
- ❖ Please register for all excursions by email to excursion@qnc.org.au or phone Barney on 07 3720 9414
- ❖ COVID-19 social distancing, hygiene and other requirements will be implemented at all QNC meetings and excursions.
- ❖ Also, NO SUPPER will be held at the meetings, and no books or library items will be on display.
- ❖ ***Please do not attend QNC meetings or outings if you are feeling unwell or showing cold or flu-like symptoms.***

GENERAL MEETINGS

General meetings are held **between February and November on the third Monday of the month** from 7:30 PM at the Toowong Uniting Church Hall, 82 Sherwood Road Toowong. This location can be accessed by public transport and is approximately 200 metres from Toowong Village Shopping Centre, Toowong Railway Station and the main bus stops. Street parking is available near the church and there is an off-street parking area on the river side of the church (ignore the permit required sign).

DIGITAL EXHIBITS AT GENERAL MEETINGS

Do you have something to share at a General Meeting? If your exhibit requires the projector, please arrive by 7:15 PM and liaise with the Lanternist to upload your PowerPoint or jpeg image. We would also love to see your exhibit in the QNC News and online.

GUEST SPEAKERS

Monday 15 November 2021

Speaker: Dale Arvidsson

Topic: The Tropical Mountain Plant Science (TroMPS) conservation project

Dale is Curator of Brisbane Botanic Gardens Mt Coot-tha, the historic City Botanic Gardens at Gardens Point, and Sherwood Arboretum. As well as horticulture and conservation and land management, Dale's diverse background also includes tourism, visual arts and design and underlying all of this – a love for plants and gardening.

TroMPS is a project led by the Australian Tropical Herbarium in Cairns, focussed on collecting flora from Australia's tropical mountaintop plant communities in far North Queensland to take pre-emptive action to secure plant species by growing them in ex-situ living collections at seven public botanic gardens. The TroMPS project aims to secure the future of native and endemic plants to the high-altitude peaks of North Queensland to 'backup' at-risk wild populations.

Dale made his original career in art, specialising in graphic design and also worked in tourism before he returned to his first love, horticulture, in his late twenties. Mt Coot-tha Botanic Gardens were opened in 1976 and its conservation interest increased when a further 4 hectares were opened up to grow threatened flora. The Botanic Gardens also holds the Queensland seed bank. TroMPS partnership was formed against a background of diminishing environment for tropical mountain plants due to habitat clearing and climate change. Whilst the main focus for conservation is National Parks, recent fires show the need to conserve endangered plants outside Parks.

Dales discussed cloud forests where one third of rainfall comes from clouds and moisture is stripped from the air by trees. There are fears that clouds may form higher than the tree-line in future climatic conditions therefore montane forests may become drier as well as hotter and soils may dry out. Dale passed around beautiful specimens of Mountain Tea tree *Cryptocarya bellendenkerana* and Wurunuru T- Tree *Leptospermum wooremoran*. Dale recommended for reading the government Report of Bellenden Kerr Range written in 1895 as being both interesting and humorous. It can be found on line.

The Botanical Gardens also have an on-going project on macadamia trees and Dale showed the Bulburrin Nut *Macadamia jansenii* which has the highest conservation priority. He stressed the importance of education and informing the public. He noted that volunteer guides are very important. There are free guided walks around both Mt Coot-tha Gardens and Sherwood Arboretum led by knowledgeable volunteers. Dale specially thanked the Australian Tropical Herbarium as well as individual colleagues for being partners in the TROmps project.

Vote of thanks: Cathie Duffy remembers QNC collaborating with Green Mtns Natural History Group in a research programme in the mountains of Lamington Plateau many years ago. She thanked Dale for a very interesting talk. Photos of Dale receiving his thank-you gifts on p4.



Coming Up - Monday 21 February 2022

Speaker: Ross Coupland

Topic: Living sticks, highlighting phasmid diversity in Southeast Queensland

Speaker Biography

In this presentation Ross will share images and insights into stick insects occurring within the greater Brisbane region and the Scenic Rim. Included will be those species commonly encountered by the casual observer within Brisbane's suburbs and those which have a more restricted distribution, in the mountainous landscapes and national parks of the Gold Coast hinterland. He will also share a few tips on how to find and photograph these curious creatures to potentially inspire others to appreciate our fascinating phasmids. This presentation will be supported by two evening excursions lead by Colleen and Ross, the first one on the following Friday night (25 February) and the second on Saturday 26 February at Gold Creek Reservoir. Whilst the main target will be stick insects, all insects and other creatures of the night will be sought. Bring headtorch, camera and wear long sleeves/pants in case of biting insects. If you are interested in attending one or both of the evening field excursions, please email excursion@qnc.org.au and include Upper Brookfield in the subject line.

On Friday 25 we will assemble at 6:30pm at end of Gold Ck Rd, Upper Brookfield, and then amble off at 7 pm for 1.5 - 2 hours of head-torching/photography.

On Saturday 26 we will meetup from 5:30pm (BYO snacks and chairs/table for some social time) before ambling off at 7 pm for 1.5 - 2 hours head-torching/photography.

Ross considers himself very much a generalist; he has a particular interest in phasmids, planthopper bugs, birds and reptiles. He has been involved in several Bioblitzes in the region and has carried out studies on invertebrates around the Scenic Rim and Brisbane. His main aim is to find, observe and photograph animals in a non-obtrusive way, to better understand their ecology.

Micropodacanthus sp



EXCURSIONS

Fees apply for weekend camps of \$2 per adult per night, plus other camping fees, if applicable. Those participating in any Club activity do so as volunteers in all respects and as such accept responsibility for any injury to themselves, however incurred. The Club or its officers cannot accept any liability or responsibility.

Recently the club had a technical issue whereby some members who were registering by email to excursion@qnc.org.au or excursions@qnc.org.au were not being received. This issue has now been resolved. We apologise for the inconvenience that this may have caused members.

REGISTRATION GUIDELINES DURING COVID-19

- The number of participants at Club activities may need to be restricted.
- **Members must register via email** to the Excursion Secretary at excursion@qnc.org.au preferably at least 24 hours before day outings and three days prior to camps.
- **Registration needs to include the names and contact details of all persons attending.**
- Participants will need to maintain social distancing requirements for the outing.
- ***Please do not attend QNC outings if you are feeling unwell or showing cold or flu-like symptoms.***

UPCOMING EXCURSIONS

Base Camp – Goomburra – Main Range National Park

Date and time: Saturday 15 January 2022 to Wednesday 19 January 2022

Leaders: Harry Hines, Barney Hines

Phone: Harry (0423 782 186) Barney (0420 351 801)

Register: by email to excursion@qnc.org.au with the subject **Goomburra** in the subject line. Please include names and contact details of all attendees.

Details: The Goomburra section of Main Range National Park has a very diverse range of habitats and is an excellent place for natural history. Goomburra is elevated ranging from 700 metres at the Manna Gums campsite (where we will camp) to over 1000 metres at Sylvester's Lookout and the edge of the escarpment. This national park has a broad range of habitats ranging from temperate woodlands to wet sclerophyll forest to rainforest. Temperate species typically found further south are present in the area, including Yellow-tufted Honeyeaters, Red Wattlebirds, and the whirring tree frog *Litoria revelata*. Glossy black cockatoos were frequenting the campsite in September and Russet-tailed thrushes were calling from the forests.

Goomburra has a good range of walking tracks which the club will utilise during the camp. Some of these walks may require bringing a picnic lunch to carry. The cascades walk has swimming holes as well as numerous creek crossings, that will likely involve members getting wet feet. The weather will likely dictate activities. If days are hot, we will head to the higher altitudes. If conditions are very wet, then it is possible that we will head out of the park for a day outing to forest estates on the Darling Downs (west of Allora).

Camping will be at the Queensland Parks and Wildlife campsite of Manna Gums. This is a public campsite so we will be sharing the facility with others. However, it is envisioned that it won't be too crowded, especially during the week, as most pundits head to the beach at that time of the year (fingers crossed). Facilities at the campsite include water (not drinking) and composting toilets. Note that wood cannot be collected from the National Park, so members will need to bring their own firewood if they desire a fire.

Members will need to book using the QPWS website.

<https://parks.des.qld.gov.au/parks/main-range>. This site also has lots of information on the park itself. Please ensure that you select Manna Gums when choosing your site. The \$2 per adult per night club fees will be also collected.

Participants should expect heat, rain, leeches, ticks and mozzies. Please bring a sense of humour to combat these!

Barney will be arriving by about Saturday lunchtime with activities planned for Sunday. Harry will be arriving on Sunday. Note that there is no mobile phone reception at the campsite.

Directions:

Goomburra can be reached from both the New England and Cunningham Highways. From the New England Highway turn off the highway 3km south of Allora onto Inverramsay Road. Follow Inverramsay Road, then Forestry Reserve Road east about 35km to the park boundary. From the Cunningham Highway turn off at Gladfield 25km west of Cunninghams Gap or 13km east of the Cunningham and New England highway junction, turn north and travel 8km to join Inverramsay Road. Follow Inverramsay Road, then Forestry Reserve

Road to the park boundary. Note that a lot of car navigation systems won't work as you approach the National Park as you will lose reception.

The last 6km of road to the park is unsealed. This section passes through "Gordon Country" - a private property that accommodates campers also. Ignore all signs as you travel through this area and continue on. It is possible that the road may be impassable due to flooding heavy rain. Check road conditions with RACQ ([external link](#)) before you visit. The road to the lookouts will be closed after heavy rain. Allow two hours travel time from Brisbane.

Evening Excursions February – Gold Creek Reservoir

The presentation at the February meeting by Ross Coupland will be supported by two evening excursions lead by Colleen and Ross. The first one will be on the following Friday night (25 February) and the second on Saturday 26 February at Gold Creek Reservoir. Whilst the main target will be stick insects, all insects and other creatures of the night will be sought. Bring headtorch, camera and wear long sleeves/pants in case of biting insects. If you interested in attending one or both of the evening field excursions, please email excursion@qnc.org.au and include **Gold Creek** in the subject line.

On **Friday 25 we will assemble at 6:30pm at end of Gold Ck Rd, Upper Brookfield**, and then amble off at 7 pm for 1.5 - 2 hours of head-torcing/photography.

On **Saturday 26 we will meetup from 5:30pm** (BYO snacks and chairs/table for some social time) before ambling off at 7 pm for 1.5 - 2 hours head-torcing/photography.

Day Excursion – Private Property, Urliup, NSW

Date and time: Saturday 26 March 2022

Leaders: Judy Haines

Phone: 0402 236 359

Register: by email to excursion@qnc.org.au with the subject **Urliup** in the subject line. Please include names and contact details of all attendees.

Details: This is a private property at 587 Urliup Road, Urliup in NSW, about one and a half hour's drive from Brisbane centre and consists of almost 7 hectares, in a valley which was partially cleared of rainforest for banana growing and is currently used for cattle grazing. There is a creek suitable for swimming lined by interesting riparian forest and a patch of uncleared rainforest, which is actually on the neighbour's land but which we can look at. There are hills to climb for those with the energy and interest. Oddly there is only one gum and almost no wattles in the valley, though neighbouring ridges have eucalypt forest. There seems to be a good variety of butterflies, dragonflies and frogs and something which bites you when you go in the swimming holes. There is plenty of shelter and shade, for rain and sun respectively, toilet facilities and water.

Long Excursion– Expedition National Park (Lonesome section)

Date and time: Sunday 10 April 2022 to Tuesday 19 April 2022

Leaders: Sally Johnsen during the preparation phase, with assistance from others during the excursion itself.

Phone: Sally (0449 517 627)

Registration: In the first instance, and as soon as possible, please email excursion@qnc.org.au with your name, email, mobile phone number, and the number in your party. The registration form, and other information relevant to the excursion, will then be emailed to you. When you get that email, please return the completed registration form as soon as possible.

Details: A long excursion to the Lonesome section of Expedition National Park was originally scheduled for April 2020. Unfortunately, it needed to be cancelled due to COVID19, and plans are underway for the 2022 long excursion to go ahead at this same national park. We will be exploring the sandstone country and Dawson River in the Arcadia Valley via Injune, including Lonesome Holdings, Lonesome National Park, Bielba National Park (4WD access only), and Lake Nuga Nuga. Some club members are familiar with this area, and they have kindly provided fauna and flora lists, maps, and general comments to inform participants of the diversity in this national park.

Limited accommodation (3 rooms with 2 people in each) in the Ranger's Hut is likely to be available, and hut facilities (including tank water) will be for use by those staying in the hut. If interested in staying in the hut, please lodge an expression of interest early. This accommodation will be issued to those deemed to have greatest need, as well as a first come basis. Those who can, are encouraged to camp.

Camping will be near the Rangers Hut at Lonesome Holdings, which is adjacent to Lonesome National Park and is managed by National Park Rangers. Updates about water will be provided closer to the time of the excursion. National Parks camping fees, and QNC camping fees, will apply. Club toilets will be set up. All participants on this excursion need to be financial members of the QNC.

Directions: Allow one full day driving from Brisbane to where we will be camping. Head west from Brisbane to Roma (580 km), then head north from Roma along the Carnarvon Development Road to Injune (90 km). From Injune continue north for a further 37 km, then turn right into Arcadia Valley Access Road. Lonesome National Park is 18 km along this road (this includes 4km gravel). More detailed directions will be provided to those who complete and return this long excursion registration form.

Bushfire: In the event of bushfire occurring in any of several the national parks in the vicinity of the long excursion, National Parks Rangers and other personnel could require access to the Ranger's Hut for operational and sleeping purposes. In the interests of maintaining safety for QNC members, the camp will be called off if this level of bushfire response occurs. Below are some photos supplied by QNC member Craig Eddie, of Boobook Ecological Consulting, Roma.

View of the paddock near the homestead



Camping Area near the homestead



Valley and Hills



Escarpment



PAST EXCURSION REPORTS

Note The November London Creek Excursion report has been unavoidably delayed and will be held over until the next edition of News

December 2021 - Samford Ecological Research Facility

By Barney Hines

This property was owned by the Marks family, who had a long history of association with the club, with both Dr E.O. Marks and his daughter E.N. (Pat) Marks being previous Presidents. More information can be found on each in the Journal (Hill 1972, Volume 20; Gillies, 2005, Volume 43 Nos. 1-3 respectively). Through this connection, our club has had many outings to this property dating from the 1940s through to the late 1990s. The property was bequeathed to QUT upon Pat's death, for use as a facility for ecological research and we have been appreciative to have been able to visit since, the last time in November 2018.

For this year's Christmas Break-up, a very good crowd of Nats gathered. Conditions were excellent, with a gentle southerly breeze taking some of the heat out of the day. The property had received lots of rain and was looking at its best. Some plants of interest were lots of flowering Currant Bush *Carissa ovata*. Fruiting plants included the wild quince *Guioa semiglauc*, the Coastal Canthium *Cyclophyllum coprosmoides* and a dodder laurel *Cassytha* sp. Birds of note included a Rose-crowned Fruit-Dove (heard but not seen) and the Grey Goshawk. An early dinner was enjoyed by all, which was followed by some night activities. Peter and Leith Woodall had their moth light up which yielded a bewildering diversity of interesting insects. A party ambled down to the creek where we heard and saw Great Barred-Frogs, as well as a Tawny Frogmouth and a Squirrel Glider.

Lots of photos were taken by the various members present, many of which can be on the club iNaturalist's page for the outing. Please follow the link <https://www.inaturalist.org/projects/qnc-2021-dec-qut-samford>.

Finally, on behalf of the club, I wish to extend a very big thank you to Matt Phillips and the staff from QUT for enabling the event to proceed.



Fan-shaped Jelly Fungus
Dacryopinax spathularia



Grass Darts and Darters



Blue-eyed Lacewing
Nymphes myrmeleonoides



Christmas Beetle
Genus *Anoplognathus*



Click Beetle
Family *Elateridae*



Antictenia Punctunculus



Genus *Boletellus*



Spreading Nut-Heads
Sphaeromorphaea australis

ITEMS OF INTEREST

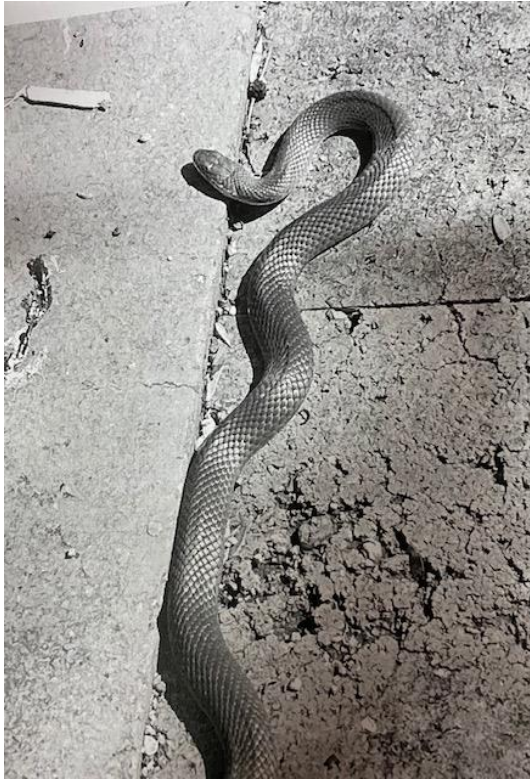
Meeting Exhibits

Most items brought to the meeting were mysteries, to be identified.

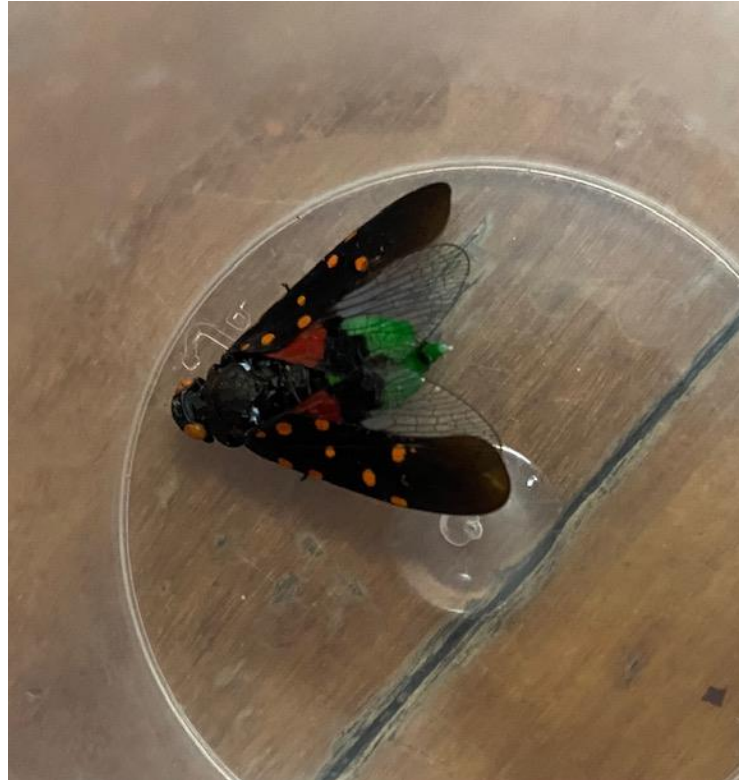
1. Judy Haines – mystery of interloping plant – requesting identification – Judy explained that her plant was one of a trayful of plants which had been discovered growing amongst native seedlings raised from seed for local revegetation projects and kept in locked shade houses in the Cubberla-Witton Catchment Group premises, No one was able to say what the plant was or who had placed it there and there was a suspicion it may be an exotic and so unsuitable for revegetation use. After some careful examination by experts, Dale said he thought it was *Alchornea thozetiana* which is a native plant but not to South East Queensland – its range being north from about Maryborough.
2. Barbara Braddock found a chrysalis with case and adult attached, covered with a white substance that she brought in for identification. Peter Woodall stated that it was a nymph case with adult emerging, but it was dead, and the unknown white substance was a fungus that probably killed the adult.



3. Doug Freckelton also brought in a pretty butterfly or moth to be identified but this may require further work.
4. Doug's second exhibit was a photo of a 40 cm snake found on brick paving, and it was suggested that it was a Brown Snake. It looked very similar to a photo of a Mulga Snake that Murray Watson had taken but due to its Brisbane location this was thought to be unlikely.



Doug Freckelton Exhibit 3



Doug Freckelton Exhibit 4

CANCELLATION of the Australian Naturalists Network (ANN) 2022 Get-Together

“We are contacting your club in order to convey the disappointing news that the Stanthorpe FNC has reluctantly come to the conclusion that it cannot proceed with their plan to host the ANN Get-Together in southern Queensland in Spring 2022. A number of factors contributed to this decision, including an inability to secure a suitable venue and caterers on workable dates, after much negotiation.

The ANN Steering Committee members are sorry that naturalists from across our nation won't have the opportunity to gather and renew old friendships in a really attractive region. We have conveyed our thanks to Stanthorpe for all the work that they have done to date, particularly in the lead-up to ANN2020 which regrettably had to be postponed due to the COVID-19 pandemic.

We would ask that you let your members know of the cancellation of ANN2022. The ANN Steering Committee will be considering next moves in terms of options for future Get-Togethers. We would very much welcome any suggestions for these or indications of willingness to consider hosting or sharing in the hosting of a future gathering.”

Memorial Cairn – Lamington National Park

On a visit to Mt Bithongabel (Lamington National Park) over Christmas, two QNC members, Annie and Greg Neill took a short detour to the Qld Naturalists' memorial cairn. The cairn is in good condition, although heavily covered in a green moss. The information sign is difficult to read due to lichen growth.

To continue the naturalist theme, we took photos of the moss and a fern growing through the moss, both on the cairn. Here are the iNaturalist web address/links to the 2 observations for any naturalist who might be able to supply an identification.

The moss <https://inaturalist.ala.org.au/observations/103625921>

The fern <https://inaturalist.ala.org.au/observations/103667643>



NEAR THIS SPOT A PARTY FROM THE QUEENSLAND NATURALISTS CLUB CAMPED IN DECEMBER 1918 THUS HELPING TO DRAW PUBLIC ATTENTION TO THE SCIENTIFIC AND SCENIC VALUE OF THIS GREAT NATIONAL PARK

**ATTENDEES – AH CHISHOLM, CD GILLIES, G HARRISON, RL HIGGINS, JT DUNLOP, OW O'BRIEN, H TRYON, CT WHITE, JE YOUNG, WH HERMAN, SRL SHEPHERD
GUIDE – H O'REILLY**

ANNUAL MEMBERSHIP SUBSCRIPTIONS

DUE 1st JULY

Subscription Type (please tick)

☐ Family \$40 ☐ Single \$25 ☐ Student /Junior \$15 ☐ Club Badge \$15

Payment Options

❖ By Post

Post a bank cheque or money order with this completed form to:

The Treasurer, Mr Mike Anderson

164/462 Beams Rd

Fitzgibbon

Queensland 4018

❖ At a General Meeting

Hand payment to the Treasurer in an envelope with this completed form.

❖ By EFT

Please transfer payment to the following bank account and email your details and newsletter preference to treasurer@qnc.org.au

Account: The Queensland Naturalists' Club Inc.

Bank: Westpac

BSB: 034-068

Account Number: 901249

Reference: Your Name

Your Contact Details

Name.....

Postal Address.....

.....

Phone

Email.....

☐ The QNC News will be sent to you by email. Please tick this box if you require a copy in the post.