



The Granite Belt Naturalist



Mail Address: Stanthorpe Field Naturalist Club Inc, PO Box 154, Stanthorpe Qld. 4380
fieldnats@granitenet.com.au@

Web site www.granitenet.com.au/groups/environment/fieldnats/

AIMS OF THE CLUB

1. To study all branches of Natural History
2. Preservation of the Flora and Fauna of Queensland
3. Encouragement of a spirit of protection towards native birds, animals and plants
4. To assist where possible in scientific research
5. To publish a monthly newsletter and post it to members



Meetings 4th Wednesday of each month at QCWA Rooms, Victoria Street, Stanthorpe, at 7.30pm
Outings: The Sunday preceding the 4th Wednesday of each month (Saturday outings as pre-arranged)
Subs: Single \$20.00, Family \$30.00 per annum, July to June

CLUB OFFICE BEARERS - 2013/2014

President	Rob McCosker	46835371
Vice-presidents	Kris Carnell	46835268
	Jeff Campbell	
Secretary	Halina Kruger	46835206
Treasurer	Carol Smallwood	46811034
Newsletter Editor		
Magazine Committee	M Mueller	46811421
	P Andrewartha	46812913
Publicity Officer	Margaret Carnell	46835268
Librarian	Trish McCosker	46835371

The Club thanks the Queensland Country Credit Union for their donation that enabled us to buy a printer.

The Club acknowledges the support of the Gambling Community Benefit Fund in the purchase of a data projector.

Stanthorpe Field Naturalists is a group member of Granite Borders Landcare.

*Management Committee: President, Vice-Presidents,
Secretary, Treasurer*



**SCALE OF DIFFICULTY FOR WALKS
ON NATS. OUTINGS**

1. Flat walking, road or track
2. Road or track, gentle hills
3. Track, some hilly sections
4. Track, some steep sections
5. Cross country, easy open forest, gentle slopes
6. Track, steep sections common, with steps
7. Cross country, some hills, some thick undergrowth
8. Cross country, steep sections with scrambles over rocks, etc., and some thick undergrowth
9. Cross country, steep, hilly, rough, thick undergrowth
10. Mountain climbing, hard going, higher level of fitness or plenty of time required

Coming Up

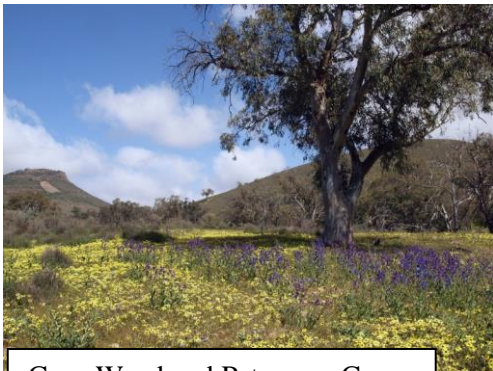
Sunday 25th May: Alum Rock with Rob McCosker

Wednesday 28th May: *South Australia* with Rob & Trish McCosker

Saturday 7th June: Tenterfield Park & Currie's Gap with Halina Kruger

**Deadline for next newsletter
10th June 2014**

May 28th Meeting Program – South Australia with Rob and Trish McCosker



Cape Weed and Patersons Curse

We visited a number of National Parks including Mutawinji, Naracoorte Caves, Lincoln, Mt Remarkable, Gawler Ranges, the granite mountains at Wudinna, Wilpena Pound and Arkaroola before returning home via Innaminka and camping on the Cooper Creek. We were fortunate to see plenty of wildflowers and some spectacular scenery to share with you.



Rock Formation

Pre-Outing Report - "Alum Rock" - Sunday 25th May

This outing is to the sheep grazing property "Alum Rock", owned by Gordon Smith, which has Pikes Creek running through it. We plan to walk down the creek to a large flood gate on the boundary with "Pikedale Station". On the way we pass some large waterholes and should see plenty of birdlife. The property name comes from a hill near to the homestead with an outcrop of alum, and a cave, and if time permits we will have a look at it when we return from the walk down the creek.

From Stanthorpe we will drive along the Amiens Road through Amiens, continue onto the Goldfields Road and turn left at the "Alum Rock" sign about 28km from Stanthorpe. The property is a further 7km on a gravel road with a couple of gates.

We will leave Weeroona Park promptly at 9.00am as usual, have morning tea at the cars but carry lunch etc. It is about a 4 hour walk to the floodgate and back, and as Gordon has kindly offered to take us, I have not done a pre-outing walk and can only guess at Grade 5 or 6 as it is part track part open forest.

Rob McCosker 46835371

Outing Report – Sundown National Park - 27th April 2014



Looking at the Granite Dyke

Ten people met at the Broadwater Camping Area in Sundown National Park at around 9am, joining the five of us who camped there. The day was overcast with a chance of showers.

Smoko was had at the cars and then the group moved off along the Western Circuit Track. Because of the threat of rain, the walk was shortened in that we did not go up Camping Ground Creek instead staying on the track until we reached the park boundary. We then walked along the boundary to the north, over the hill to

the granite dyke that passes from the Silver Queen Mine SSW through the park and disappears just to the west. Light rain then began and we hurriedly walked down to the park HQ where we had lunch on the verandah.

The walk passed through silver-leaved ironbark/ white cypress regrowth. Melichrus, peach bush, *Pittosporum angustifolium* (native apricot), wilga, *Rostellularia adscendens* and some flowering greenhood ground orchids were noted. Forty-two species of birds were either seen or reliably heard.



Pittosporum angustifolium



Walking through cypress regrowth

To round out the day some members walked along the Permanent Waterhole Track before leaving for Stanthorpe.

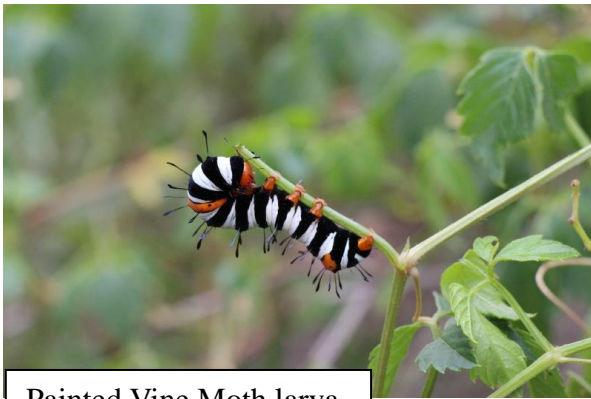
Peter Haselgrove

On Tuesday Morning Kris and I walked to the Permanent Waterhole bird watching and saw a platypus at 9.30am. – Editor

Bird List Sundown National Park Camped 25th -28th April 2014 (Stanthorpe Nats day walk).

Australian King-Parrot, Australian Magpie, Australian Owlet-nightjar, Australian Wood Duck, Azure Kingfisher, Bar-shouldered Dove, Blue-faced Honeyeater, Brown Thornbill, Common Bronzewing, Crimson Rosella, Double-barred Finch, Eastern Rosella, Eastern Yellow Robin, Fan-tailed Cuckoo, Galah, Golden Whistler, Grey Butcherbird, Grey Fantail, Grey Shrike-thrush, Jacky Winter, Laughing Kookaburra, Little Pied Cormorant, Magpie-lark, Masked Lapwing, Noisy Miner, Pale-headed Rosella, Peaceful Dove, Pied Currawong, Red-winged Parrot, Restless Flycatcher, Silvereve Speckled Warbler, Spotted Pardalote, Striped Honeyeater, Weebill, Welcome Swallow, White-eared Honeyeater, White-plumed Honeyeater, White-throated Treecreeper, White-winged Chough, Willie Wagtail, Wonga Pigeon.

Moths at Sundown National Park



Painted Vine Moth larva

This handsome caterpillar was feeding on a creeper in the garden of the Park Headquarters at Sundown National Park. It is the larva of a day flying moth, *Agarista agricola* whose common name is the Painted Vine Moth or St Joseph's coat moth according to brisbaneinsects.com.

The moth is medium size and very colourful.

On Sunday night when the rain started the Ghost Moths, *Trictena atripalpis* started emerging and

blundering into the lights. The adults cannot feed and the larvae feed on eucalypt roots. They are known as bardi grubs.

When we came out of the tent on Monday morning they had all disappeared, except for the odd one hidden in the food box. A flock of white-winged choughs had been foraging and continued to do so for some time. They investigated the empty shells where the moths had come out, but only took a peck out of them. A couple feasted on fat green caterpillars on a creeper beside the campsite – probably the same creeper as the Painted Vine Moth.



Ghost Moths on the table

Margaret Carnell

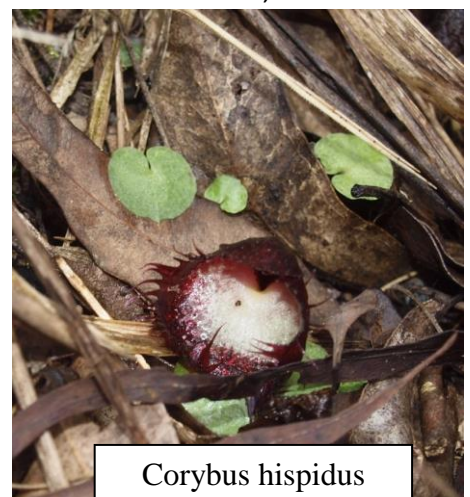
Outing Report Girraween Lodge 3rd May.

With the Weather Bureau forecasting single figure temperatures and the possibility of snow I was prepared to call off the outing, but the morning was clear with patches of sunlight and 5 brave souls ventured out, in spite of the freezing westerlies. We had our cuppa at the "Girraween Hilton", shareholder's campsite at the Girraween Lodge, then set off to the ridge to the north. After crossing the old orchard and cultivation



Looking towards Castle Rock

paddocks with views of Castle Rock we started up the hill and very soon noticed some Greenhood orchids. Closer inspection revealed two species of Greenhood and a Mosquito orchid which Jeff has since identified as *Pterostylis vitreus*, *P. longicurva* and *Acianthus exsertus*, the Dark mosquito orchid. After taking a few



Corybus hispidus

photos of these we had not gone far up the hill when Kris asked if I had ever seen any Helmet orchids on the property, and before I could answer Jeff pointed some out right where we were walking! We wondered if Kris has some extrasensory connection with orchids! They were identified as Bristly helmet orchids *Corybus hispidus*. We also saw King orchids and a *Bulbophyllum* sp. nearby though not in flower.

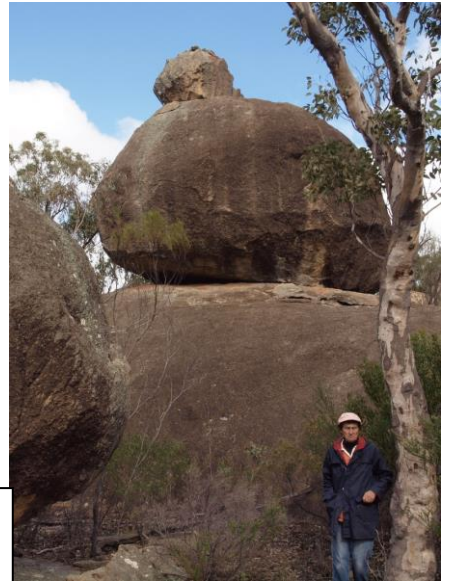


Pterostylus longicurva

After more photos we continued to the top of the ridge where the views to the north of the Pyramids were partly obscured by eucalypts, however when we passed through a row of large boulders we had a good view of Turtle Rock, The Sphinx and Mt Norman to the south. We continued along this ridge for a bit before descending to the paddock and returning to the cars for lunch and then heading home to get out of the wind.

Other flowers seen were Five corners *Styphelia viridis* subsp. *breviflora*, Round leaved Phebalium *Leionema rotundifolium*, *Boronia amabilis*, Wild carrot *Trachymene incisa*, *Dampiera purpurea*, Urn heath *Melichrus urceolatus*, *Isotoma anethifolia*, Granite bluebell *Wahlenbergia graniticola*, and a blue Westringia. Also of note were the Bracket fungi growing on acacia trees and roots and some Coral fungi.

Rob McCosker



Boulder formation
Girraween Lodge

Pre-Outing Tenterfield Park and Currie's Gap 7th June 2014

Leader: Halina Kruger

We will meet at Weeroona Park at 9.00am and go to Tenterfield Park for morning tea. We will look at what has been done since our last visit, especially at the Western end. Depending on how long we spend there, we can then go to look at the reserve at Currie's Gap. Take lunch as well as morning tea.

Minutes of the Meeting of the Stanthorpe Field Naturalist Club Inc. Held in QCWA Rooms, Victoria St, Stanthorpe on Wednesday 23rd April 2014

Meeting opened: 7.35pm

Attendance: 22 Apologies as per attendance book

Minutes of the previous meeting:

H Kruger moved L Saunders seconded Accepted

Business arising from the minutes: nil

Correspondence:

H Kruger moved that the Inward Correspondence accepted J Campbell seconded

Financial Report:

H Kruger moved that the financial report be accepted M Carnell seconded

Outing Reports:

Week day outing: - 5th April - G Greenup "Maryland"

Weekend outing: - after ANZAC day

Pre-outings:

Weekend outing: - 27th April – P & L Haselgrove Western Circuit in the bottom of Sundown NP

Saturday outing: - 3rd May – R McCosker – Girraween Lodge

Sunday outing: - 25th May - R McCosker – Alum Rock Goldfields – Pike Creek

General Business:

- K Carnell suggested that the Fassifern, Murrumbidgee and other club Newsletters to be included on our website for all our members to read on the internet at their leisure.
- SRDC seniors week R McCosker suggested we include our club outing and meeting night for inclusion in the Seniors calendar. 24th Aug – "Sugarloaf Mine" and 27th Meeting and presentation on "Kangaroo Island".

Next Meeting: 28 May 2014

Presentation next month: R McCosker "South Australia"

Specimens/ Items of interest:

C Hockings brought in a booklet "Some plants of Stanthorpe District" by B.C. Dodd. Stanthorpe June 1975

R McCosker brought in a specimen of something for everyone one to try and guess what little creature the skeletal remains were of. The consensus at the end of the meeting was that it was the skeletal remains of a frog. The tiny long fingers were perfectly intact.

Meeting closed: 7.55 pm

Tonight's Presentation: E Walker "South Sea island adventures"

INCOME.

BALANCE C/F.	\$743.77
Stanthorpe Camera Club	
½ share PO Box rental	53.50
BALANCE	\$797.27
Less Expenses	107.00
BALANCE 23/4/2014	\$690.27

EXPENSES.

PO Box Rental	107.00
---------------	--------