

# The Granite Belt Naturalist



Stanthorpe Field Naturalists Club Inc., PO BOX 154, Stanthorpe, QLD 4380

Web Site: [www.granitenet.com.au/groups/environment/fieldnats/](http://www.granitenet.com.au/groups/environment/fieldnats/)

## AIMS OF THE CLUB

1. To study all branches of Natural History
2. Preservation of the flora and fauna of Queensland
3. Encourage a spirit of protection towards native birds, animals and plants
4. Assist, where possible, in scientific research
5. Publish a monthly newsletter for the information of members.

## WEB EDITION

If you have downloaded this from our web site but are not a member of the Stanthorpe Field Nats please let us know by email to [fieldnats@granitenet.com.au](mailto:fieldnats@granitenet.com.au), so that we can see how well used the newsletter is.

Thank you.

**Meetings:** 4th Wednesday of each month at QCWA Rooms, Victoria Street, Stanthorpe, at 7.30pm

**Outings:** The Sunday preceding the 4<sup>th</sup> Wednesday of each month, (Friday outings as pre-arranged).

NOTE; the latest status of any outing is posted to the FieldNats web site as soon as possible.



*The Pyramids, Girraween National Park*

## CLUB OFFICE BEARERS – 2009/2010

|                     |                      |          |
|---------------------|----------------------|----------|
| President           | Kris Carnell;        | 46835268 |
| Vice-presidents :   | Michael Mueller;     | 46811421 |
|                     | Rob McCosker;        | 46835371 |
|                     | Halina Kruger;       | 46835206 |
| Secretary:          | Nanette Jurd;        | 46837119 |
| Treasurer:          | Michael Jefferies;   | 46812389 |
| Newsletter Editor:  | Wendy & Neil Donges; | 46812913 |
| Magazine Committee: | Janet Hockings;      | 46811978 |
| Publicity Officer:  | Trish McCosker;      | 46835371 |
| Librarian:          |                      |          |

Management Committee: President, Vice-Presidents, Secretary, Treasurer.

The Club acknowledges the support of the Gambling Community Benefit Fund in the production of this newsletter and the purchase of a data projector.

Deadline for next newsletter: 3rd May 2010

*THE 40TH ANNIVERSARY YEAR*

### COMING UP

**Thursday 15<sup>th</sup> April – Spicer's Peak; M Mueller**

**Saturday 24<sup>th</sup> April – Nundubbermere Top Falls; Kris & Margaret Carnell**

**Friday 7<sup>th</sup> May – Koreelah NP; Kris & Margaret Carnell**

**Sunday 23<sup>rd</sup> May – Goondiwindi Botanic Gardens; Jeff Campbell**

### SCALE OF DIFFICULTY FOR WALKS ON NATS OUTINGS



1. Flat walking, road or track
2. Road or track, gentle hills
3. Track, some hilly sections
4. Track, some steep sections
5. Cross country, easy open forest, gentle slopes
6. Track, steep sections common, with steps
7. Cross country, some hills, some thick undergrowth
8. Cross country, steep sections with scrambles over rocks, etc., and some thick undergrowth
9. Cross country, steep, hilly, rough, thick undergrowth
10. Mountain climbing, hard going, higher level of fitness or plenty of time required

This document is on the website above for download. If there is anyone who would prefer to get their copy from the website, please email [fieldnats@granitenet.com.au](mailto:fieldnats@granitenet.com.au) for inclusion on the email notification list. The website will have the document before it reaches you by post (and in colour).

### Notices

An **outing to Goondiwindi** is planned for the 23<sup>rd</sup> May. Because of the distance involved and the disappointing outing to Millmerran, we would like to get definite numbers beforehand. Could you please advise at either of the next two meetings if you intend coming. *Kris.*

### Girraween web site

The web site created by Vanessa and Chris Ryan is getting more comprehensive all the time and is now referred to regularly as a source of information on the Park.

It is on our web site on the Links page or at <http://www.rymich.com/girraween/>

Several members have contributed photos and expertise. More contributions are welcome!

### Editor's notes and tips

*I have found two items that may be of interest or useful to those who use computers a lot.*

*The first is a web site that will translate one file format to another. I used it the other day to convert a document made in Microsoft Publisher (which I don't use) into a file I could handle. The site is called [www.zamzar.com](http://www.zamzar.com) and will convert files up to 100mb free!*

*The second is a free piece of software that will allow you to make a PDF file from a web site; useful if you have a web site with a lot of information you want to read off line. It is at [www.primopdf.com](http://www.primopdf.com) Note:- this is only for Windows machines; web browsers on Mac machines can do this already from their browser without extra software!*

### Open Office

*This newsletter and the electronic version is made using Open Office ver 3.1 which is FREE and does all that MS Office does. Contributions in .rtf format for text and .jpg for pictures separate from the text please. (files in formats such as MS Word require a lot more editing to remove hidden formatting).*

## Pre-Outing Reports

### Spicer's Peak – Thursday 15th April

Michael Mueller requests that potential attendees ring to express interest by Monday 12th April. The plan is to climb Spicer's Peak from the Spicer's Gap campground. This climb is hard, grade 9 to 10, and good weather is essential. It is proposed to camp overnight on the 14th and climb on the 15th. Ring Michael NO LATER than Monday the 12th on 4681 1421. By the time the printed version of this reaches the reader there may be little time to react; my apologies -Ed.

### Nundubbermere Top Falls: Note it is on Saturday 24<sup>th</sup> April



We will meet at Weeroona Park at 9 am for this outing. The drive to the parking area is about 45 minutes. After morning tea we will head down a gully following animal tracks until we reach the river. It takes about an hour to walk upstream to the pool at the bottom of the falls. It is slow walking picking your way along tracks and over rocks but it's not too bad. There is quite an area to explore around the falls. There was no water running when the pre outing was done in February. The plan is to carry lunch with us and then make our way back afterwards. This is all dependant on there not being a big flow in the river. If the outing

has to be changed we will still meet at Weeroona at 9am for an alternative venue.

*Kris Carnell 46835268 after 15<sup>th</sup> April.*

### Friday 7<sup>th</sup> May: Koreelah NP, on the QLD NSW border

This park runs parallel to Spring Creek Road along from the Queen Mary Falls. Kris & Margaret Carnell

### Sunday 23rd May - Goondiwindi Botanical Gardens -Jeff Campbell

Travel via Texas Road to Inglewood for early Smoko and rest stop.

Continue on Cunningham Hwy to Goondiwindi. Turn right at the St George turnoff (signposted) and proceed to T-junction. Turn left and continue on towards Goondiwindi, taking the turn off to the Botanic Gardens on right. Continue to Botanic Gardens entrance on right. Leisurely look at the Eremophila garden and open treelands walk followed by lunch. Toilets and BBQ available. Following lunch backtrack towards Goondiwindi and turn right to the Gunsynd memorial beside the river. Ample parking available. Choice of river walk or local museum (small entrance fee). Smoko prior to returning to Stanthorpe. Level 1.

*Please indicate your intention to go on this trip at the Monthly meeting on the 28<sup>th</sup> April or by phone or email to Kris Carnell. This trip will not proceed without a reasonable number of participants.*

## REMEMBER

Changes to the program appear on our very own web site as soon as I can get them on, keep an eye on it when you can – *Michael Jefferies*

## Outing Reports

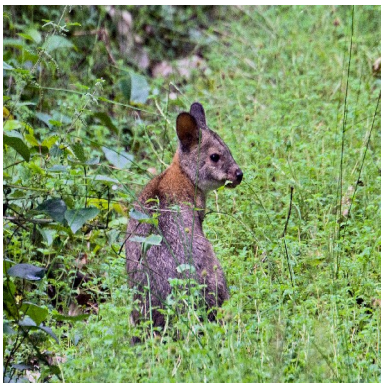
### Unnamed rock like a face – Poziers SF.



Four of us, led by Michael Mueller, had a gentle drive out to the south edge of Poziers SF by driving along Lang Road off Amiens Road, past a number of well netted apple plantations with apples still to pick, till we could go no further.

A short uphill walk brought us to an east facing outcrop on which stood the rock as illustrated. After smoko next to the rock we walked along some of the forest tracks through the well grown *Pinus radiata* till we got back to the cars. There were a few flowers out, including a bright blue herb sheltering next to the outcrops, and some butterflies plus a few fungi after the damp weather. The coordinates are about -28.552702 151.882349; copy and paste these into Google Maps or Google Earth to see the locality. *Michael Jefferies*

### CASCADE WALK OF GOOMBURRA



*Red-necked pademelon,  
Thylogale thetis*

After anticipating bad weather with wind & showers that had been predicted all week with the cyclone looming in the north, our day started off fine & sunny with no wind.

Seven of us left Weeroona Park for Goomburra. We arrived at the Manna Campground at Goomburra for morning tea & we were joined by another member so eight of set off on the walk along the cascade trail of Dalrymple Creek. At the beginning of the track, we spotted 2 or 3 pademelons, just curious to walkers. They were not that timid & we were able to get a good look at them.

The creek level was up a little from the rain so it made some of the crossing quite challenging. We walked along Dalrymple Creek crossing it several times. With some steep inclines along the way. Some of the crossings were quite challenging because of the height of the water. After a couple of crossings with trying to keep feet dry, some of us decided to take shoes off & found it easier to wade across. After a couple of falls in the creek, in the end some just waded across shoes and all. Fortunately the water was a very pleasant temperature. It was much easier than trying to rock hop. The track was eroded & stony in places as it wound its way up & down the embankments. There were a couple of good swimming holes along the way for any one so inclined.

Along the way, we passed a fern filled undercut cliff and noticed a lot of tree orchids & hare foot ferns along the way. We then climb through a stand of hoop pines before once again descending into the creek. It then zigzagged steeply uphill through rain forest & piccabeen palms to a junction to the Cascade Falls. What a spectacular sight the Cascade Falls were with their volume of





water cascading of the cliff. We momentarily forgot our wet feet & clothes & marvelled at the sight. If the water wasn't enough to get us wet, we would not have witnessed such a sight of this waterfall. We then zigzagged further uphill over some stone steps. The track climbed past the head of the falls and another cascade to an open grassy area. It was quite a steep walk down an old timber track planted with pines, through open forest with Grass trees. The track steeply descends in the eastern end of the camping area back to where we started. Along the way, after the falls, we noted some carpets of wild violets along the path.



*Piccabeen Palm*

When we reached the Manna Campground, we had lunch before heading off up the Lookout Road which was a steep drive up the hill through areas of tree ferns along the side of the road. On reaching the end of the road, we stopped to take the short walk to the Mount Castle Lookout. The Mount Castle lookout is a natural lookout that offers views over Laidley Valley. With Liverpool Range. (Mount Castle directly in front of the lookout.) The short walk passes through lush damp rainforest scattered with hoop pines. There were also a lot of Piccabeen palm trees (or walking stick palms) along the way, many still with their brilliant red berries hanging down. Because of the heavy cloud from the cyclone in the north east, the visibility from the lookout was not very clear, & we decided not to go to the Sylvester lookout which is another short walk look along the Lookout Road.

We returned to our cars & then went our different ways home. *Nanette Jurd*

**Minutes of the Meeting of the Stanthorpe Field Naturalist Club Inc.**  
**Held in QCWA Rooms, Victoria st, Stanthorpe on Wednesday 24<sup>th</sup> March 2010**

**Meeting opened:** 7.45pm

**Attendance:** 13 Apologies 2 as per attendance book

**Minutes of the previous meeting:**  
confirmed by M Jefferies seconded by M Marsden **carried**

**Business arising from the minutes:**

Toowoomba FN to visit 26<sup>th</sup> to 29<sup>th</sup> March 2010 Dinner at the Girraween Inn \$30

**Correspondence:**

Correspondence accepted on the motion of Halina Kruger seconded C Hockings Carried

**Financial Report:** \$47.49

Due to the low balance with the account H Kruger offered loan until the club's subs come due to Post office box payment now due.

**Outing Reports**

**Weekday outing:** Nil for the month due to Apple and Grape Festival

**Sunday outing:** N Jurd to report on the Cascades at Goomburra

**Pre-outings**

**Week day outing:** 2<sup>nd</sup> April M Mueller outing near Donelley's Castle

**Weekend outing:** Sat 24<sup>th</sup> April Nundubbermere Top Falls with Kris and Margaret Carnell

**General Business:**

D Hocking program for 23rd June cancelled until Sept or Oct if possible.

## Monthly Newsletter of the Stanthorpe Field Naturalist Club Inc. April 2010 – Vol 417

M Mueller – sun spots – will keep in touch via email with a time to view sun spots.  
Will need to discuss in detail membership and outing subs.

**Next Meeting:** 28<sup>th</sup> April 2010

**Meeting closed : 8:15**

**Slide presentation** by Peter Andrewartha on his visit to Sabah, Borneo

### Specimens/ Items of interest:

Photos from Goomburra Red-necked pademelon; Mount Castle panorama; M Jefferies

FINANCIAL STATEMENT for March from 24 / 02 /10 to 24 /03 /10

Cash Book balance as at 24/ 02 /10 \$155.99

Receipts:- NIL

Expenditure:-

Magazine postage \$ 61.25

Printing \$ 31.25

Room Rent \$ 16.00

Total \$108.50

CASH BOOK BALANCE AS AT 24 /03 / 10 \$47.49...

### Bank reconciliation

Cash Book balance as at 24 / 03/10

Plus outstanding cheques NIL

Less outstanding cash receipts NIL

Agrees with bank balance as at 24 / 03 / 10 \$47.49...

Accounts for payment:- NIL

Proposed by: Nanette Jurd

Seconded by: Michael Jefferies

## BLOG

The newsletter has details of both future outings and pre-outing reports. I have added an embryo Blog to the web-site on which members can post their own accounts of trips and happenings as well as posting the reports as they become available. The inspiration for this was the one the Toowoomba Club has set up; see <http://toowoombafieldnaturalists.blogspot.com/> At the moment I will have to post to it but contributions (in .rtf format) with separate pictures around 65kb are welcome ! Email me at [michael@granitenet.com.au](mailto:michael@granitenet.com.au) *Michael Jefferies*