



The Granite Belt Naturalist



Mail Address: Stanthorpe Field Naturalist Club Inc, PO Box 154, Stanthorpe Qld. 4380

AIMS OF THE CLUB

1. To study all branches of Natural History
2. Preservation of the Flora and Fauna of Queensland
3. Encouragement of a spirit of protection towards native birds, animals and plants
4. To assist where possible in scientific research
5. To publish a monthly newsletter and post it to members



The Pyramids, Girraween National Park

The Club acknowledges the support of the Gambling Community Benefit Fund in the production of this Newsletter

- Meetings** 4th Wednesday of each month at QCWA Rooms, Victoria Street, Stanthorpe, at 7.30pm
- Outings:** The Sunday preceding the 4th Wednesday of each month (Friday outings as pre-arranged)
- Subs:** Single \$15.00, Family \$25.00 per annum, July to June

Mail contributions: The Newsletter Editor, PO Box 33, Severnlea Qld. 4352. **Email:** orana@halenet.com.au

CLUB OFFICE BEARERS – 2003/2004

President	Kris Carnell	46835268
Vice-presidents	Millie Marsden	46811593
	Col Hockings	46811978
Secretary	Liz Bourne	46836374
Treasurer	Dave Bright	46811034
Newsletter Editor	Margaret Carnell	46835268
Magazine Committee	Wendy & Neil Donges	46812913
Publicity Officer	Janet Hockings	46811978
Librarian	Trish McCosker	46835371
Management Committee:	President, Vice-Presidents, Secretary, Treasurer	

SCALE OF DIFFICULTY FOR WALKS ON NATS. OUTINGS

1. Flat walking, road or track
2. Road or track, gentle hills
3. Track, some hilly sections
4. Track, some steep sections
5. Cross country, easy open forest, gentle slopes
6. Track, steep sections common, with steps
7. Cross country, some hills, some thick undergrowth
8. Cross country, steep sections with scrambles over rocks, etc., and some thick undergrowth
9. Cross country, steep, hilly, rough, thick undergrowth
10. Mountain climbing, hard going, higher level of fitness or plenty of time required



Deadline for next Newsletter: 7th June 2004

Coming Up

Outing Sunday 23rd May: The Dalveen Tunnels led by Archie Cameron

Next Meeting Wednesday 26th May: Program by David Wilson – *The Glories of the Top End* – Kakadu, Litchfield National Park etc.

Friday Outing 4th June: Castle Rock at Girraween National Park. Leader John Allison

Outing to Mt Marley April 2nd

The outing on April 2nd to Mt Marley was attended by six members. Meeting at 9.00am at the junction of Greenup Street and Diamond Vale Road we followed a mud map prepared by John Allison. Thanks John!

Passing over the rock slabs before entering the southern end of Alice Street, we found a few flowers in bloom and these were faithfully recorded by Dell Wham.

We climbed the walking track and had morning tea on the rocks overlooking the northern part of town. Despite our early start it was quite hot when we were climbing. Following a stop at the lookout, we came down the road to Lock Street and passed by the sediment ponds on the way back to our starting point.

On the way, as Dell puts it – we saw many ferals. I wonder should we be drawing attention to these as they spread very rapidly. Should we be doing something about it as a club? The aims of our club say that we preserve the flora and fauna and it is a well-known fact that many of these “feral” plants inhibit the growth of natural species.

Millie Marsden

Plant List Outing to Mt Marley prepared by Dell Wham

Commelina cyanea (Wandering Jew)	Tricoryne elatior (Yellow Rush Lily)	Brachyscome
Cassinia quinquefaria (Dead Finish)	Chrysocephalum apiculatum (Yellow Buttons)	Leucochrysum albicans (Hoary Sunray)
Podolepis arachnoidea	Isotoma anethifolia	Lobelia gracilis
Wahlenbergia graniticola (Granite Bluebell)	Hibbertia aspera	Melichrus urceolatus (Urn Heath)
Styphelia viridis susp. brevifolia (Five Corners)	Pultenea sp.	Pelargonium australe
Plectranthus sp	Banksia integrifolia (Honeysuckle Oak)	Stylidium graminifolium (Grass Trigger Plant)

+ loads of ferals		
-------------------	--	--

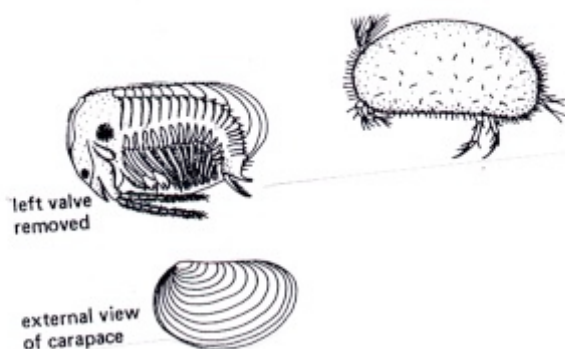
Outing to “Mountain View” Amiens – 26th April 2004

Monday Holiday and a perfect day, weatherwise brought forth an excellent roll up of NATS members, including Andrew and Jenny Cameron and Genevieve Reeves from Toowoomba, and our faithfuls from Warwick.

Three different areas of difficulty had been nominated – thus we set off with three different leaders – Rob, Alec and Jean. Some members managed to fit in at least two of the walks. They enjoyed fellowship in the garden with morning tea and then lunch. Places visited included “Mount Ferguson”, “Rats Castle”, “The Sow and Pigs” and some faded rock drawings.

1. Mount Ferguson, the highest point in this point of the district provided a variety of rock formations, views and an interesting stand of Wallangarra White Gums *E. scoparia* – 13 trees and the furthest west they’ve been recorded.
2. Those who took on the challenge of “Rats Castle” its top and numerous channels and crevices by way of descent, claimed to have had a real challenge. One member upon return announced that she was “still trembling and would like a stiff whisky”, which is certainly a new request in Naturalist Club Circles! And one not easy to satisfy!
3. The visit to the “Sow and Pigs” was the easier climb, rambling over a huge area of weathered granite. Early settlers thought that this huge piece of granite with small boulders beside it (as seen from a distance) looked like a sow with feeding piglets by her side.

This area is particularly good for a variety of wild flowers, however, they have severely suffered from drought, but after recent rains, there are signs of rejuvenation. More rain is needed to assist growth. The small rock pools (gnammas) were full of water. Incidentally the tiny shelled beasts found in this type of pool, has produced a new species of quaint and ancient beings on the Sow and Pigs this year.



The Australian authority on these fellows is at Newcastle N.S.W University. It may be of interest to say he was listening to the weather on the air and heard that Amiens had the best rainfall for a long period, in January 2004. He hopped in his car and came straight up and there, after extended dry, and almost by magic, were the chaps he wanted to see. His excitement was infectious. They come to life, develop into adulthood and reproduce all in about a week. They have survived from ancient times because they have mastered this; because if the

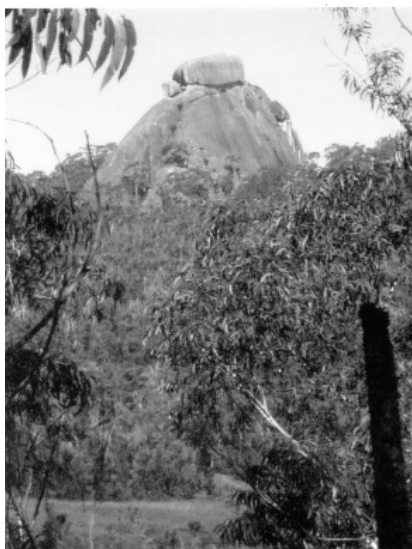
weather is hot, they will be dry in 14 days.

I was also delighted to hear David Wilson was interested in the “window” in a large granite boulder and could explain its existence so well. Others were interested to see some Fairy Martin nests inside it. I’ve always felt it an interesting feature.

4. Some members who had time went to see some faded drawings which supposedly featured bird tracks, which is a sign to permanent water. There is an area near it known locally as the “Roman Bath”. Several set off to locate the feature and found it.

Jean Harslett

Campout Report – Gibraltar Range May 1-3



The welcome rain during the week led to some nice crisp, cool weather for the Labour Day Long Weekend. Several groups arrived at the park at various stages. Kris and Margaret Carnell with their three granddaughters had already set up camp on the Friday. On Saturday, they met up with Desley McDonagh, Dell Wham and I at the visitor centre for morning tea.

We then proceeded along Mulligans Drive, parking at the track head to Anvil Rock. The track initially passes through Dry Eucalypt Forest full of grass trees, before following the edge of an open swamp heathland, which feature prominently in the area. Both habitats are recovering well from the bushfires only 18 months ago. Most *Banksia spinulosa*, *Hakea* and other shrubs are blackened skeletons, but all have opened seed pods, so new communities should mature in several year's time.

The track bends away, gradually climbing Anvil Rock. It is around the base of Granite outcrops that The Gibraltar Waratah (*Telopea aspera*) occurs, regrowing from the base of burnt plants. About here, Dave Bright caught up to us.

Once on Anvil Rock (The top boulders can't be ascended easily), good views from various sides reveal country reminiscent of Girraween. Old Man Hat, a distinct vertical dome capped with an enormous “boulder” lies to the South; with Dandahra Crag to the west.

We returned to Mulligans Drive for a belated lunch, continuing on to Mulligan's Hut Camping Ground. Here we found Peter Kerr already in full camp, Desley finding the last individual space. Fortunately, Dave and Lorna (motorhome) and Dell and I (campervan) found two old camp spaces along the day use access.



After a cool night, we gathered near the bridge across Little Dandahra Creek for the walk to The Needles. The track gradually climbs through New England Blackbutt and Messmate Woodland, which together with the camp area was saved from the fire (about 10 years regrowth since a previous burn).

Being Autumn, many varieties of gilled, woody pore, shelf and coral Fungi were visible along the track edge. This slowed the photographers among us and we were passed by 3 other groups of people. At the 'T', we headed east, soon entering darker pockets of “warm” temperate rainforest.

This is dominated by Coachwood (*Ceratopetalum apetalum*), Sassafras (*Doryphora sassafras*), some very tall *Banksia integrifolia* var. *compar* and many other trees. The understory includes Macleay Laurel (*Ianopteris macleayanus*), Brush Pepperbush (*Tasmannia insipida*), Walking Stick Palm (*Linospadix monostachyus*) which was in fruit, King Fern (*Todea barbara*) and Rough Tree Fern (*Cyathea australis*) - one of 3 types of tree fern found here.

The track steeply ascended a knoll, where a Lyrebird was heard (Bower-bird like sounds). We then descended along a spur, moving through a change of habitat to Tall Gum Forest. Trees here included Tallowwood (*Eucalyptus microcorys*), Sydney Blue Gum (*E. saligna*) and Bloodwood (*Carymbia* sp.). this then opens to Teatrees and Bulloaks with numerous Pink Rock Orchids (*Dendrobium kingianum*) at the lookout.

From here 'The Needles', a very familiar Granite outcrop can be seen on an adjacent spur. Beyond, the gorges of Dandahra Creeks cut deep below the edge of plateau.

The remainder of the weekend was restful –short walks to the lovely Barra Nulla Cascades, birdwatching and enjoying a local wallaby and joey.

Regardless of how often visited, Gibraltar Range always rewards the nature lover. I look forward to the coming spring for another great wildflower season. Late October along the Mallee Walk is usually one of the highlights of this floristically rich area.

Ian Milinovich.

List of Plants in Flower – Gibraltar Range – May 1-3 2004

Family	Name	Common Name
Liliaceae	Blandfordia grandiflora	Christmas Bell
Orchidaceae	Spirathes australis	Ladies Tresses
Apiaceae	Trachymene incisa	Pincushion flower
Epacidaeae	Epacris longiflora	Native Fuchsia
	Epacris microphylla	Coral Heath
	Lissanthe sp?	
	Leucopogon lanceolatus	
Geraniaceae	Geranium neglectum	Swamp Geranium
Goodeniaceae	Cooperneekia barbata	
	Velleia spathulata	
Lobeliaceae	Lobelia gibbosa	
	Isotoma axillans	
Myrtaceae	Callistemon pityoides	Alpine Bottlebrush
Pittosporaceae	Billardiera scandens	Apple Dumplings
Proteaceae	Banksia marginata	Silver Banksia
	Banksia spinulosa	Hill Banksia
	Grevillea acerata	Grey Spider Flower

Rutaceae	Boronia anemonifolia?	
Santalaceae	Choretrum candellei	White Sour Bush
Thymelaceae	Pimelea linifolia	Common Rice Flower
Violaceae	Viola betonitifolia	Purple Violet

Hi Nats,

A couple of days ago we went to Gibraltar Range. We went on a couple of walks. We went to The Needles and to a big rock. It was Anvil Rock. It was 2km, The Needles were 3km.



We were only there for three days. Two people got a leech – Margaret and I.
Erin Anderson (Aged 7)

Hi Nats,

Not very long ago we went to Gibraltar Range. It was fantastic. When we first got there we went to Anvil Rock. It was 2km. We all

thought it was going to be easy but it was a bit more difficult than we thought.

When we got back we had lunch and everyone set up camp. The next day we went to The Needles. They were great and on the way we saw lots of different fungi. It was a 3km walk.

On the last day we went to the Barra Nulla Cascades. We had a really great time and thank you to the people who participated.

*Caitlin Anderson
(Aged 9)*



**Outing to Castle Rock, Girraween - Friday 4th June
Leader John Allison**

We will meet at Weeroona Park and leave at 11.00am or alternately, be at the Castle Rock campground at Girraween. We will have lunch at the top, or thereabouts, so bring backpack, lunch, water and binoculars. Although this is not a long hike, there are some steep grades but it is not difficult. Some other areas of interest nearby will also be looked at if time allows. Coffee at Codys coffee shop at Ballandean on the way home could be a treat.

**Outing to Dalveen Tunnels – Sunday 23rd May
Leaders Archie and Grace Cameron**

We will meet at Jim Mitchell Park at Dalveen at 9.00am and travel along the highway to the Risdon turnoff at the southern end of Rosenthal Road. Warwick members can meet us there at about 9.20. We then head up the Connolly Dam Road to “Oaklands”, travelling through interesting types of country.

After the walk to the tunnel there are a number of things to walk to, depending on the time and the inclination of the walkers – The Gorge Dam, the old railway tank, the remains of a bridge over Mineral Creek (one of the first railway “span” bridges in Queensland and the Ormoral (means Silver Valley) Siding.

Then we will travel to the Old Stanthorpe Road via the Silverwood Siding and Blakes Road. If time permits we will have a look around the old hotel site before returning to Dalveen and looking at the second tunnel which is on Cameron’s property.

It is planned to have lunch and smokos at the vehicles but bring water for the walk along the railway line.

For further information phone Archie or Grace on 46852347.

Minutes of the Meeting of the Stanthorpe Field Naturalist Club Inc held in QCWA Rooms, Victoria St., Stanthorpe on Wednesday 28th April 2004

Opening: The meeting opened at 7. 36pm with Kris Carnell welcoming members.

Attendance: There were 14 present at the meeting and 10 apologies as per the attendance book. Kris passed on to the meeting the thanks from Janet Hockings for the card and best wishes from club members.

Minutes of the previous meeting: The minutes of the previous meeting held on the 24 March were received as a correct record of the meeting on the motion of Margaret Carnell, seconded by Rod Hutchin. Carried.

Business Arising from the Minutes:

1. Tenterfield Naturalists Club

Kris attended a recent meeting of the club in Tenterfield and outlined some of our club structures and activities. They appear to be having some problems with their club’s incorporation. They currently have about 30 members and have been working on a project to rehabilitate an old pony club site back to its original bush condition. They are likely to join with our club for some outings in the future.

Correspondence:

Inwards:

1. Chinchilla Field Nats – *Urimbirra* - April
2. Senator John Cherry – update on the work of the Democrats
3. Toowoomba Field Naturalists Club – *Darling Downs Naturalist* – March
4. Murrumbidgee Field Naturalists Club – *Murrumbidgee Naturalist* – April
5. Samson Total Technology – statements for \$6.60 and \$22.88
6. Ellen Barratt - membership

This correspondence was accepted on the motion of Liz Bourne, seconded by Patience James. Carried.

Financial Statement for the period from 24/3/04 to the 28/4/04:

Cash book balance as at 24/3/04 690.44

Receipts:

Room rent collection	7.50
Stanthorpe Camera Club – PO Box rental	<u>27.50</u>
	<u>35.00</u>

Expenditure:

Govt. tax	.60
-----------	-----

Cash book balance as at 28/4/04 was \$724.84 which agrees with the cash book and bank balance as at 28/4/04.

This financial report was received on the motion of Dave Bright, seconded by Jean Harslett. Carried



Outing Reports:

1. April Friday outing was to Mt Marley and was organised by Millie Marsden. Six people attended. They noticed a lot of introduced plants on their walk which are invading the slopes of the mountain. The secretary will contact the Stanthorpe Shire Council to seek their permission to try and undertake a weed control program. The native gardens in Heritage Park also need weeding.

2. Harslett’s property – 26 April

Three different walks were offered in the morning - to Mt Ferguson, Rat’s Castle and the Sow and Pigs. 30 or so people came along. After lunch, Jean took a group to Amiens Forest to show them some aboriginal rock art on an overhang and a group also went off to find a permanent water hole – “the Roman Baths” – not far from the rock art site.

Pre-Outing Reports

1. May campout to Gibraltar Range National Park

Ian Milinovich provided details of this proposed campout from 1 – 3 May.

2. The Friday outing on 7 May will be to Donnelly's Castle, led by Dave Bright.

3. The outing on Sunday 23 May will be to the Dalveen Tunnels and will be led by Archie Cameron.

4. The meeting program on 26th May will be given by David Wilson.

Specimens:

1. Desley McDonagh had prints from the outing to Severn Scenes; Tooloom and Crooked Creek

2. Jean Harslett had photos of some spiny lizards found in the Crystal Mountain area which the Museum had yet to identify.

General Business:

1. Liz mentioned that there would be a display in the Stanthorpe Plaza on 27 May as part of the Stanthorpe wildflower project. There would be information and a slide show as well as a poster competition from local school children.

The meeting closed at 8.20pm and was followed by a slide programme of two trips taken by the Carnells around Central NSW, including the coastal areas around Port Stephens as well as the Hill End gold fields.