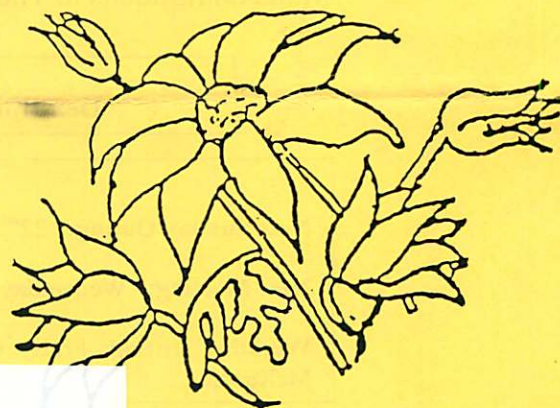
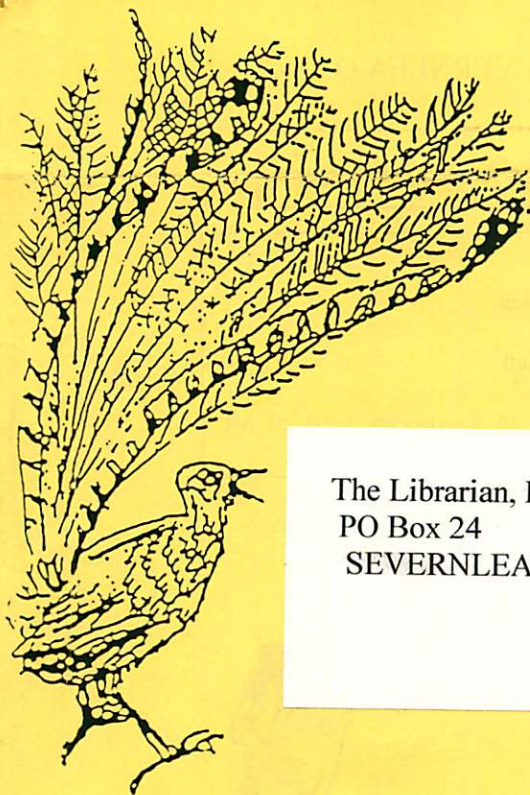
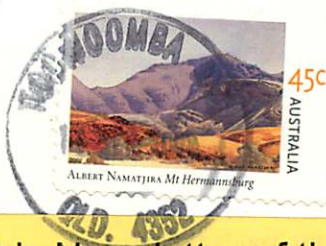


SEPTEMBER 2002
VOL 343

THE GRANITE BELT NATURALIST



The Librarian, Field Nats
PO Box 24
SEVERNLEA Q 4352



Monthly Newsletter of the

Stanthorpe Field Naturalist Club Inc.

AIMS OF THE CLUB

1. To study all branches of Natural History.
2. Preservation of the Flora and Fauna of Queensland.
3. Encouragement of a spirit of protection towards native birds, animals and plants.
4. To assist where possible in scientific research.
5. To publish a monthly newsletter and post it to members.

Meetings: 4th Wednesday of each Month at QCWA Rooms at 7.30pm.
Outings: The Sunday preceding the 4th Wednesday of each Month.
Subscriptions: Single \$15.00 Family \$25.00 per annum July to June.
Address: Stanthorpe Field Naturalist Club Inc.,
P O Box 154,
Stanthorpe Q 4380.

CLUB OFFICE BEARERS 2001 - 2002

President	Kris Carnell	46835268
Vice-Presidents	Millie Marsden	46 811593
	Mario Pennisi	46813750
Secretary	Liz Bourne	46 836374
Treasurer	Dave Bright	46811034
Newsletter Editor	Margaret Carnell	46 835268
Magazine Committee	Wendy & Neil Donges	46 812913
Publicity Officer	Patience James	46 811853
Librarian	Trish McCosker	46 835371
Management Committee President, Vice-Presidents, Secretary, Treasurer		

Mail contributions to The Newsletter Editor, PO Box 33 SEVERNLEA Q 4352
e-mail orana@halenet.com.au

Deadline for Newsletter: 7th October 2002

Coming Up

Next Sunday Outing: 22nd September Girraween with Rob McCosker

Next Meeting: Wednesday 25th September. Program by Jean Harslett

Weekday Outing: Friday October 4th led by Desley McDonagh to a property west of Mt McKenzie.

Scale Of Difficulty For Walks On Nats Outings

1. Flat walking, road or track.
2. Road or track, gentle hills.
3. Track, some hilly sections.
4. Track, some steep sections.
5. Cross country, easy open forest, gentle slopes.
6. Track, steep sections common, with steps.
7. Cross country, some hills, some thick undergrowth.
8. Cross country, steep sections with scrambles over rocks etc., and some thick undergrowth.
9. Cross country, steep, hilly, rough, thick undergrowth.
10. Mountain climbing, hard going, higher level of fitness or plenty of time required.



Minutes of the Meeting of the Stanthorpe Field Naturalist Club Inc held in QCWA Rooms, Victoria St., Stanthorpe on Wednesday 28 August, 2002

Opening: The meeting opened at 8.05pm, following the Annual General Meeting.

Attendance: There were 29 present at the meeting and 8 apologies as per the attendance book.

Minutes of the previous meeting: The minutes of the previous meeting held on the 24th July were received as a correct record of the meeting on the motion of Millie Marsden, seconded by Rob McCosker. Carried.

Correspondence:

Inwards:

1. Toowoomba Bushwalkers Club - *Footprint* - August 2002
2. Murrumbidgee Field Nats Club - *Murrumbidgee Naturalist* - August 2002
3. Chinchilla Field Nats Club - *Urimbirra* - August 2002
4. Toowoomba Field Naturalists Club - *Darling Downs Naturalist* - June 2002
5. Margaret Compton - membership renewal

6. Fassifern Field Naturalists - newsletter - July 2002; August 2002
7. Directory of Australian Associations - update of club contacts
8. Samson Total Technology - invoice of \$69 for toner; quote for a new photocopier
9. Workplace, Health and Safety - Workplace, Health and Safety Week

This correspondence was accepted on the motion of Liz Bourne, seconded by Val Richardson. Carried.

Financial Statement for the period from 25/7/02 to 28/8/02:

Cash book balance as at 24/7/02 \$ 1126.90

Receipts:

Subscriptions	405.00
Room rent collection	3.10
Donations	5.00

Expenditure:

Photocopier repairs	88.00
Govt. tax	0.30

Balance as at 28/8/02 is \$1451.70 which agrees with the cash book balance as at 28/8/02.

Accounts for Payment:

Room rent - July/Aug/Sept	45.00
Auditing fees -United Tax & Accounting	115.00
Postage of newsletter	54.00
Samson Total Technology	69.00

This financial report was received on the motion of Dave Bright, seconded by Col Hockings. Carried

Outing Reports:

1. Sugarloaf tin mining area

The planned outing to the Sugarloaf area, to be led by Mario Pennisi on 25th August was cancelled due to inclement weather. However, seven people who had planned to go on this walk went out to the cemetery at Wilsons Downfall and then on to Bald Rock National Park.

2. Friday outing to Dr Robert's Waterhole in Girraween National Park

John Allison and 13 others went on this outing.

Pre-outing Reports:

1. Girraween National Park - 22 September

This will be led by Rob McCosker and will probably be going cross country through a section of the park, north of The Junction.

2. Wildflower outing on 8 September

No venue has been selected yet for this outing as the wildflowers are not likely to be particularly good because of the continuing dry weather. John Allison offered to take people back to the Dr Robert's Waterhole area.

General Business:

1. Public Liability

The Queensland Government has yet to give us information about the likely costs of joining their group insurance scheme but media reports suggest that it might be \$400 + which would be more than we currently are paying. We need to contact our current insurers to see if our premiums are likely to rise next year.

2. New Photocopier

It may be possible to apply for a grant to buy a new photocopier under the Gaming Machine Community Benefit Fund. The closing date for the next round of applications is 30 September. It would be desirable to identify other community organisations in Stanthorpe who may also be able to make use of the photocopier so as to demonstrate wider community benefit likely to result from our purchase.

3. Jean Harslett Historical Collection

Millie Marsden suggested our Club should consider contributing to the Historical Society's fund raising efforts to construct a building at the Museum to house Jean Harslett's collection of photos and other historical records for the Stanthorpe district.

4. Tom Archer said he was still working on his proposal to develop a booklet on the natural attractions of the Stanthorpe district.

5. Dave Bright made the suggestion that it would be a good idea to have a supper after all meetings to give members a better opportunity to get to know one another better, particularly those new to the club. Millie suggested we would need to nominate people to organise this each month.

Specimens:

John Allison reported on finding a climbing orchid in flower at Mt Tully and that this area might be a possible venue for a future outing.

Meeting closed at 8.40pm and was followed by a slide presentation by members of the outings during the last year.

Outing Report Finney's Falls

The Friday 5th July outing attracted but a handful of walkers but those who attended enjoyed the outing and the fellowship.

We met at Heritage Park at 11.00am and headed up along the pathway created by the LEAP scheme in 1994. The names of those involved in this Landcare and Environmental Action Programme under the leadership of Michael Boucher are listed on a plaque at the entrance to the bushland.

It was a leisurely stroll along the creek with many diversions to the creek itself where we exclaimed at just how low the water level really is.

We noted that the footbridge which the NATS painted several years ago, is in need of more paint. Are we able to do anything about this?

We had lunch at Geoff Marsden's crossing directly across Quart Pot Creek from the homestay "Diamond Vale". We then entered Bill Humble's property and traversed this until we came to Finneys Falls. My grand daughters thought this was a strange name for the area, as there was not a drop of water to be seen at all. They enjoyed a good climb among the rocks while we more mature folk spoke of other pleasant times we had spent in the area.

We followed the track along the northern side of the creek to the junction near the "Red" bridge. Then back to the park, not a long walk but a very pleasant time was had by all.

Flowers were not on the agenda but Rod persisted and found one very sad looking everlasting daisy.

Birds seen were Yellow Robin, Wrens, Tree Creeper, Kookaburra, Shrike Thrush, Grey Fantail, while the Sacred Ibis entertained us with a fly past.

Millie Marsden

Outing Report Girraween National Park August 2nd.

Eleven members and friends enjoyed an interesting outing to Girraween National park on Friday August 2nd. We explored an area adjacent to Dr Roberts Waterhole parking area, following a service road into the Pyramids Creek area of the National Park. The whole district is very dry and the creek was very dry. One area, which should be a waterfall, had dry moss clinging to the rock. Some controlled burning had been undertaken by the park rangers.

Wild flowers were surprisingly healthy. If/when we get rain in time, it should be a good spring flowering season.

This is a very interesting area of Girraween to visit – even some of the “locals” hadn’t been there before. We plan to go there again.

Tis where the “naturists” lived and visited years ago before the area became a part of Girraween National Park. We remembered this but it was too cold to re-enact history!

Desley McDonagh

(Scribe appointed by John Allison)

Birds: white eared honeyeater, eastern spinebill, yellow faced honeyeater, striated pardalote, tree creeper, pied currawong, crow, pied butcherbird, female lyrebird (seen by **one** lucky Nat!)

Flowers:

Acacia: adunca, rupii, ulicifolia, venulosa

Banksia: spinulosa, collina

Epacris, Stenothemum scortechinii, Olearia microphylla, Leucopogon neoanglicus, Phebalium ambiens, Hovea purpurea, Mirbelia speciosa, Kunzea obovata, Pomaderris (heavy bud)

Outing Report August 25th

August’s outing which was to be to a Sugarloaf Tin Mine was cancelled, due to bad weather. As there is a strong interest from club members, this outing will be rescheduled to a later date.

On the preouting, I observed may grey kangaroos, Red Neck Wallabies, Red Tailed Black Cockatoos and a small honeyeater feeding on a bottle brush flower.

Mario Pennisi

Outing Report – September Half Day Wildflowers

On Sunday 8th September eight people headed out to an area of Girraween National Park, one half a kilometre north of Dr Roberts Waterhole car park on the Pyramids Road, by the old stone/wood gates. After a cuppa the crew were led off into the scrub with no specific intention but to see what flowers were out, but alas not many more were seen since the last trip. There were a lot of different wattles blooming.



We joined the track near the waterfall, which was, surprisingly, with water. After crossing,

we scrambled on to an area of exposed rock and viewed out to Sliprocks, the Pyramids to the west, Mt Norman and Castle Rock to the south. As the walking programme was pretty much as it happened, we set off into the recent control burnt out area and explored the open areas left by the fire. Amazing how many areas become visible after such a hot fire. The members began to spread out in the large rocks and after reassembling, we ambled off down to the creek and much to our surprise, found a large pool of water to have lunch by. It was interesting to note the difference in blooming states of the same species over an area of 200 metres, some showing tight bud and others in full bloom. After a relaxing hour we headed off home, a pleasant outing over.

John Allison

September Outing to Girraween

The Outing for the 22nd September will be to explore a ridge to the north of the Junction Track in Girraween National Park. This ridge has a series of balancing rocks, which provide photographic opportunities as well as views over the Park from a different angle. There is no track so I would have to rate the walk about 8 on our scale of difficulty, however it is not a long walk so we will have plenty of time. We will have lunch, and explore some of the vast area of granite on the northern side of the ridge before returning to the cars.

Meet at Weeroona Park for a 9.00am start or Girraween at the start of the Junction Track at 9.30am.

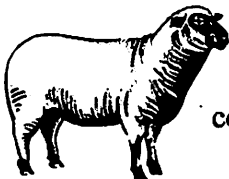
Bring a backpack with lunch and water, wear sturdy shoes, long pants and a hat and don't forget camera and binoculars.

See you there!

Leader - Rob McCosker phone 4683 5371.

Weekday Outing 4th October

The outing on 4th October will be to the property of Brian and Marcia Murray which is on the western side of Mt McKenzie. Marcia is Patience James' daughter. We will leave Weeroona Park at 11.00am and will have lunch on arrival.



The property is a sheep property with a very interesting creek and trees. More information will be available at the September meeting or by contacting Desley on 46813074

Wood Swallows

In the last week we have observed a large flock (30 to 50) of wood swallows, dusky we think, flying late in the afternoon, feeding on insects and calling continuously. On two days they were seen where Kris was working near the Uniting Church at Severnlea, and yesterday they were just behind our house. We don't know how common this is, but we haven't seen them here before.