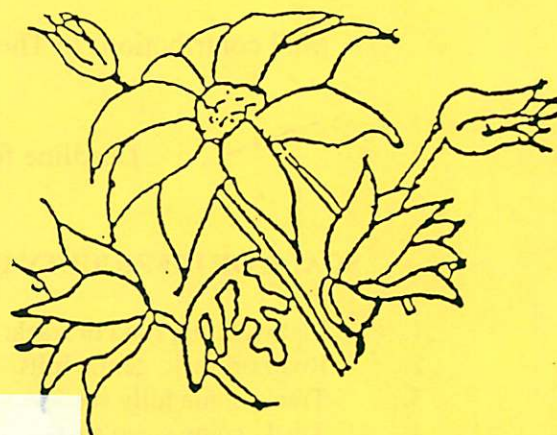
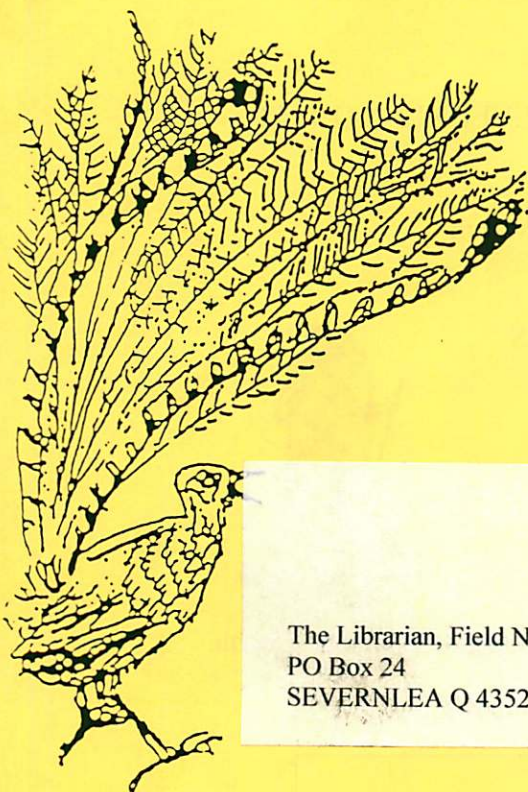


FEBRUARY 2002

Vol. 336

# THE GRANITE BELT NATURALIST



The Librarian, Field Nats  
PO Box 24  
SEVERNLEA Q 4352

Monthly Newsletter of the

Stanthorpe Field Naturalist Club Inc.

## AIMS OF THE CLUB

1. To study all branches of Natural History.
2. Preservation of the Flora and Fauna of Queensland.
3. Encouragement of a spirit of protection towards native birds, animals and plants.
4. To assist where possible in scientific research.
5. To publish a monthly newsletter and post it to members.

\*\*\*\*\*

Meetings: 4<sup>th</sup> Wednesday of each Month at QCWA Rooms at 7.30pm.  
Outings: The Sunday preceding the 4<sup>th</sup> Wednesday of each Month.  
Subscriptions: Single \$15.00 Family \$25.00 per annum July to June.  
Address: Stanthorpe Field Naturalist Club Inc.,  
P O Box 154,  
Stanthorpe Q 4380.



## ppCLUB OFFICE BEARERS 2001 - 2002

President	Desley McDonagh	46 813074
Vice-Presidents	Millie Marsden	46 811593
	Kris Carnell	46 835268
Secretary	Liz Bourne	46 836374
Treasurer	Julia Brown	46 814540
Newsletter Editor	Margaret Carnell	46 835268
Magazine Committee	Wendy & Neil Donges	
Publicity Officer	Patience James	46 811853
Librarian	Trish McCosker	46 835371
Management Committee President, Vice-Presidents, Secretary, Treasurer		

Mail contributions to The Newsletter Editor, PO Box 33 SEVERNLEA Q 4352  
e-mail [orana@halenet.com.au](mailto:orana@halenet.com.au)

Deadline for next Newsletter Tuesday 12<sup>th</sup> March

### SCALE OF DIFFICULTY FOR WALKS ON NATS OUTINGS

1. Flat walking, road or track.
2. Road or track, gentle hills.
3. Track, some hilly sections.
4. Track, some steep sections.
5. Cross country, easy open forest, gentle slopes.
6. Track, steep sections common, with steps.
7. Cross country, some hills, some thick undergrowth.
8. Cross country, steep sections with scrambles over rocks etc., and some thick undergrowth.
9. Cross country, steep, hilly, rough, thick undergrowth.
10. Mountain climbing, hard going, higher level of fitness or plenty of time required.



### Coming Up

**Next Outing:** Sunday 24<sup>th</sup> February, Wallangarra Historical Precinct and walk through to Doctor Robert's Waterhole.

**Next Meeting:** Wednesday, 27<sup>th</sup> February, "A Canal Longboat Adventure – Walkers Way"

**Friday Outing:** 1<sup>st</sup> March, Bald Rock Creek led by Desley McDonagh.

**Program for March Meeting:** Scotland by Desley McDonagh

### Walk to Billyrimba Lookout

Helen Hartman is organizing a walk to Billyrimba Lookout for a group of walkers who are visiting Tenterfield on Sunday 3<sup>rd</sup> March. There will be an early start in the morning and the walk will finish early in the afternoon. This would be a good opportunity for people who like to walk, as the group would like to do a short walk – ten or twelve kilometres.

For more information phone Helen at home on 02 67361423 or at the Railway Museum on 02 67362223 where a message may be left on the answering machine. Everyone is welcome.



## My Favourite Place

This month, instead of "My Favourite Place" we are very pleased to have the following article from Annette and Errol.

### A Canal Longboat Adventure – Walkers Way

Next Meeting – Wednesday 27<sup>th</sup> February

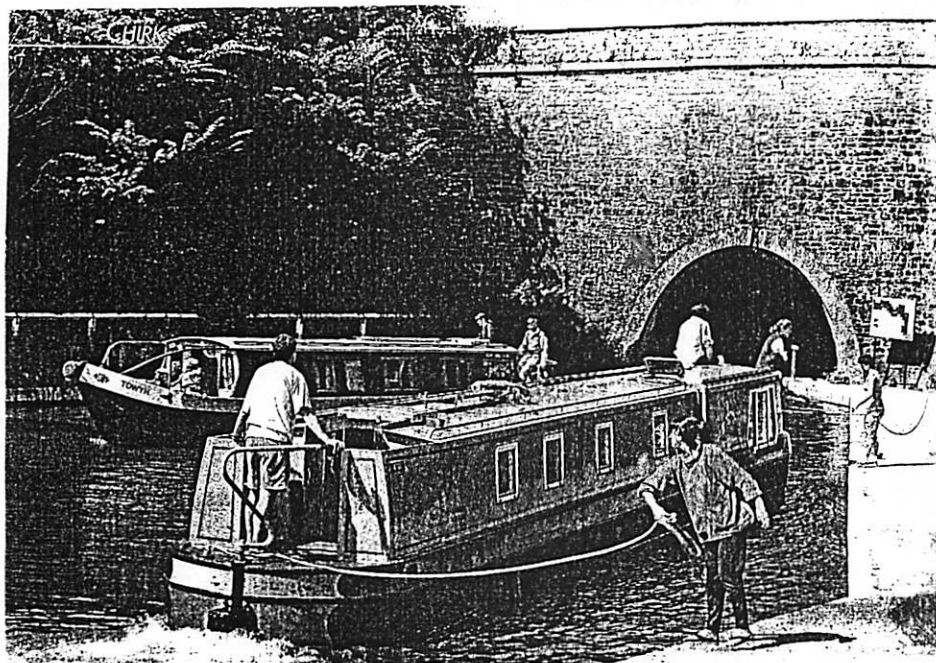
Annette & Errol Walker

Annett and Errol will share their experiences as they explore the fascinating industrial archaeology of the canal system in the U.K. They travelled the length and breadth of the U.K. photographing abandoned, as well as many restored waterways which originally crisscrossed the island over 200 years ago.

As well as studying the architecture of the canal locks and bridges, they enjoyed a first hand holiday experience skippering their own self-contained canal-boat in northern Wales.

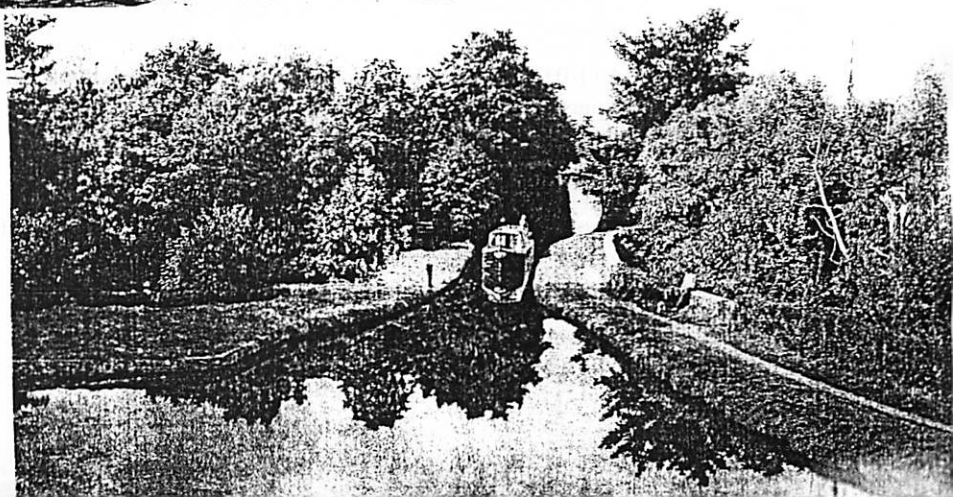
The canals in this part of Wales run through spectacular mountainous countryside, which necessitated the construction of high aqueducts and even long tunnels through the mountains. Many of these edifices have been fully restored and negotiating them provided a most interesting adventure holiday

The canal-boat also provided a good base for walks into the picturesque Welsh rural areas.



Preparing to traverse the  
Chirk Tunnel

A typical canal scene showing old  
towpath on right-hand side



**Minutes of the Meeting of the Stanthorpe Field Naturalist Club Inc  
held in QCWA Rooms, Victoria St., Stanthorpe on Wednesday 28 November, 2001**

**Opening:** The meeting opened at 7.38pm with President, Kris Carnell, welcoming members. He had received an apology from Bill Goebel who was to have been tonight's guest speaker. Unfortunately, he was unable to attend due to illness.

**Attendance:** There were 24 present at the meeting and 7 apologies as per the attendance book.

**Minutes of the previous meeting:** The minutes of the previous meeting held on the 24<sup>th</sup> October were received as a correct record of the meeting on the motion of Tom Archer, seconded by Patience James. Carried.

**Business Arising from the Minutes:**

**1. Newsletter**

Kris reminded members that he would like contributions for a new "My Favourite Place" section in the newsletter for next year.

**Correspondence:**

**Inwards:**

1. Toowoomba Bushwalkers Club - *Footprint* - Nov 2001
2. Murrumbidgee Field Naturalists Club - *Murrumbidgee Naturalist* - Nov 2001
3. Chinchilla Field Nats Club - *Urimbirra* - Nov 2001
4. Senator Andrew Bartlett - copy of Democrats policy on funding of charities
5. Membership renewal - Val White
6. Stanthorpe Shire Council - invitation to Christmas function
7. interNational Parktours - 2002 program
8. Toowoomba Field Naturalists Club - *Darling Downs Naturalist* - Nov 2001
9. Qld Naturalist Club - thanks for outing to Amiens State Forest
10. Commonwealth Bank - offer of business loan
11. Melrose Press Ltd. - request for biographical information
12. Qld Naturalists Club - *Queensland Naturalist* - Dec 2001

**Outwards Correspondence:**

1. Community service announcements for outings and meetings

This correspondence was accepted on the motion of Liz Bourne, seconded by Jean Harslett. Carried.

**Business Arising from the Correspondence:**

1. Invitation to Stanthorpe Council's Christmas function

Kath and Vern Sullivan agreed to represent the Club at this function.

**Financial Statement for the period from 24/10/01 to 28/11/01:**

The small discrepancy noted between the previous financial statement and the bank balance has now been sorted out since the treasurer's return.

Balance as at 24/10/01 \$ 1,281.91

**Receipts:**

Subscriptions	105.00
Room rent collection	<u>.75</u>
	105.75

**Expenditure:**

Room rent	10.00
Magazine postage	33.30
Govt tax	<u>1.20</u>
	44.50

Balance as at 28/11/01 is \$1,342.41 which agrees with the cash book balance.

Outstanding cheques: magazine postage \$36.45

Less outstanding cash receipts - subs 15.00

Agrees with bank balance as at 15/11/01 of \$1,363.86

This financial report was received on the motion of Dave Bright, seconded by John Allison. Carried

**Outing Report:**

Kris Carnell said he had copies of the plant list from the outing to Amiens State Forest on 28 October.

Kris reported on the outing led by Rob Simcocks to Petzlers Hill. Five people continued on beyond the hill to Dr Robert's Waterhole in Girraween National Park via Split Rock and the Kitchen Caves. 60 flowering plants were seen but few birds. The Allison's saw an Australian bittern at the Waterhole.

**Christmas Break-up:**

This will be on Sunday 9 December at the Carnell's from 2pm with a barbeque starting at 5.30pm.

**January Outing:**

This is planned for Sunday 20 January and will be to a reserve on the Severn River, behind the Puglisi's.

**General Business:**

1. Desley McDonagh reported that English blackbirds had been seen in town. On a recent trip to Storm King Dam with visitors from the Sunshine Coast, they had seen 40 species of birds.
2. Liz Bourne said she had recently had discussions with Chris Loveday and Jeanette Davis from the Stanthorpe Shire Council regarding the identification and protection of significant roadside vegetation. The Council is preparing a manual to aid in the identification of particular species and she requested the input of club members with information about sites of significance.

**Specimens:**

1. Millie Marsden had photos taken at a previous club outing to Petzlers Hill.
2. Col Hockings had a grasshopper collected from the outing which was identified as *Zaprochilus australis*.
3. Errol Walker had a new brochure about the national parks around Tenterfield

The meeting closed at 8.13pm and was followed by a slide presentation by Rob and Trish McCosker of their recent trip to the north west of Western Australia.

**Outing Report 22<sup>nd</sup> November 2001**

We woke to grey skies on Sunday 22<sup>nd</sup> when Rob Simcocks was to lead the outing to Petzlers Hill, and through to the Kangaroo Paddock at Girraween, via Slip Rock and the Kitchen Caves. Fourteen of us met at Weeroona Park and travelled to Peter Pugno's property at Eukey in high clearance vehicles.

It started to rain a little as we drove past his orchard and through the bush to head up Petzler's Hill, with a slight detour to admire his peach patch (We took a wrong turning). We passed the old Rifle Range and Rob pointed out that there were vertical stripes on the rocks at the end of the Range where bullets had exploded and copper had run down, killing the lichen.

After the obligatory cuppa we headed off, up a slashed track, wearing our raincoats. It wasn't long before we discarded them, as the drizzle eased and it warmed up. We took note of the trigger plant with the grass-like foliage on the way, and compared it with the one at higher altitude, which looks like a miniature pine tree. There were a few *boronia* sp. in flower which we were fortunate to notice, as they only grow a few inches high at the best of times, and these had been slashed. The walk was quite steep, but only the last hundred metres or so were rough underfoot.

At the top of the hill there was water in some rock holes from the rain, and we looked down over Storm King Dam and picked out some local landmarks. On a clear day you can see Mt Lindesay, Mt Barney, Wilson's Peak and Mt Superbus, however it was too hazy when we were there. We had morning tea in the shelter of some rocks, before heading back down to

the slashed track. Most of us tried some persoonia berries for dessert – not all of them were sweet.

Five of us headed back to ferry the vehicles to the parking area at Dr Robert's Waterhole, while the rest set out on the strenuous trek. John and Sue Allison showed us some purple donkey orchids *Diuris punctata*, and the climbing orchid *Erythrorchis cassythoides* in the swampy ground across from the parking area.

After lunch we took a gentle stroll to the Underground River, and saw quite a lot of the donkey orchids and the little boronia on the way, as well as numerous other flowers. There were three different Callistemons in bloom and several peas, one of which was *Dilwynnia retorta*, the only one of the eggs and bacon I can identify with any certainty. We saw a skink sitting very still on a large rock across from the track. I was going to say he was sunning himself, but there was no sun.

We had a delightful walk, and there was quite a good flow of water in the creeks. The beautiful red and orange colours in the rocks were heightened by the moisture. The yellow rice flower was growing amongst the rocks at the top of the Underground River. When we looked back from the track we saw a lizard silhouetted on top of a rock.

We couldn't loiter as there was thunder rumbling and we had to drive to meet the other group at the Kangaroo Paddock at 3.30pm. We were almost back to the cars when the rain started. We were half-way down the hill to the rendezvous when we met Col with everyone on board coming to meet us. We drove home through quite heavy rain and felt we were very lucky to have had such an enjoyable outing, with no rain to worry about until the last fifteen minutes.

Many thanks to Rob Simcocks for allowing us to visit his property, and for leading the walk through the National Park. He made us feel really welcome and passed on plenty of information about the area and the vegetation. I'll leave it to Kris to report on the Slip Rock, Kitchen Caves part of the outing.

*Margaret Carnell*

The group who walked through had lunch at Slip Rock and listened to frogs singing in some water in a crack in the rock. At the base of Slip Rock we saw a Lyrebird's display mound. I was surprised at how open the country was and how easy the walking nearly to the National Parks fire trail, but the creek area was a little rough and scratchy. We had our raincoats off and on three or four times.

We saw three or four Callistemons, and a large dagger orchid. At Kitchen Caves there was lots of *Bulbophyllum* and quite a lot had been blown down. From Kitchen Caves we came down around the S.E. side of the Second Pyramid. It was slow going with lots of undergrowth. Just as we reached the open paddock the skies opened and it bucketed down. Fortunately Janet was waiting on the road, so we all piled in to her vehicle and went to meet the others.

*Kris Carnell*

**Friday Outing 1<sup>st</sup> March led by Desley McDonagh.**

We will meet at Weeroona Park at 11.30am for our outing to Bald Rock Creek, and drive to Brian McDonagh's property at Lyra. On arrival, we will drive to the top of the paddock where we will have lunch at the cars, then go through the fence into Girraween National Park, where we can ramble along the creek for as long as we wish.

**Christmas Break Up at "Orana"**

Sunday, 9<sup>th</sup> December dawned fine and clear, if a little hot. Nats started to arrive around two o'clock and assembled under the Arbutus and Pin Oak trees, where there were freshly picked apricots to eat, and some delicious cherries provided by Rod.

Everyone was provided with a mud map of the walking tracks, which were marked with coloured tape, and Kris led a number of people up the mountain track. From the top of the mountain there are views to the mountains at Sundown to the south west, the TV tower at Passchendaele, the Telstra tower at Dalveen, and Blue Mountain to the north east. Houses in College Road, Stanthorpe are easily visible.

One of the highlights of the mountain trek was the sighting of a spotted quail thrush on its nest at the back of the mountain. It's the first time it's been sighted at *Orana*. We examined a climbing orchid *Erythrorchis cassythoides* with a red stem instead of brown, and a *Babbingtonia sp* (formerly *BaECKea*) which we had never seen here before. A few people decided to do the self-guided walks and especially admired the Fern Pool. There were Hyacinth Orchids *Dipodium punctatum* across the creek and a *Dendrobium canaliculatum* in a tree near the boundary fence.

My grand daughter Erin had broken her leg the week before, so my family and I got out the old pram to take her down to the creek crossing where she could dabble her good foot in the water. It was quite a job getting her back up the hill!

We had afternoon tea under the trees and had a ramble around the garden before lighting the flares and the barbecue to cook tea. People sat around and talked for quite a while and the first spots of rain fell just as the last couple of groups were packing up to leave. It was lovely to have so many people able to attend. We really enjoyed it.

*Margaret Carnell*

**Change of Program**

March 24<sup>th</sup> Glen Crossman hopes to lead an outing to Cliff Mountain.

July 21<sup>st</sup> David Wilson and the Warwick crew will lead the outing to Mt Superbus/The Steamers. This may include a campout on the Saturday night.

## Outing 24<sup>th</sup> February 2002

### Wallangarra Historical Precinct and Walk to Doctor Robert's Waterhole

**Leader John Allison**

**Phone: 46813227**



As Glen Crossman is not available to lead the proposed outing to Cliff Mountain, we have arranged an alternative day out. The outing is proposed to start at the Wallangarra Historical Precinct (Railway Station) at 9.00am. Anyone who needs a lift can meet at Weeroona Park at 8.30am. The Cook-off will be in progress at the Precinct, and the railway museum will be open for the cost of a gold coin.

When we've finished looking there, we will travel to Mt Norman Day Use Area. We are not sure whether we will have morning tea at Wallangarra or Mt Norman. Those interested in walking through to Dr Robert's Waterhole will follow John on a walk which is not along the fire trail. It is a moderate walk. Water and lunch will be carried. We expect to be at the car park at Dr Robert's Waterhole around 4.30pm. Those who don't do the walk will ramble along the Mt Norman track for a while and then ferry cars to pick up the others.

As we will be ferrying cars we hope to share vehicles as much as possible.

### Integrated Pest Management?



Kris has noticed recently that whenever he sprays the tomatoes on the Church Block, three willy wagtails come into the patch and catch insects that are disturbed by the spray pump. Our next door neighbour has five butcher birds which appear when he sprays his patch of tomatoes. Why is it that Kris only sees the willy wagtails and Richard sees only butcher birds when they are only three hundred metres apart?

While on the subject of birds, Kris has a reputation for playing his CDs loudly and realised that a whistler was singing when the CD was playing, especially with violin music. The louder the music, the louder the singing, and when the CD finished the whistler actually stopped.