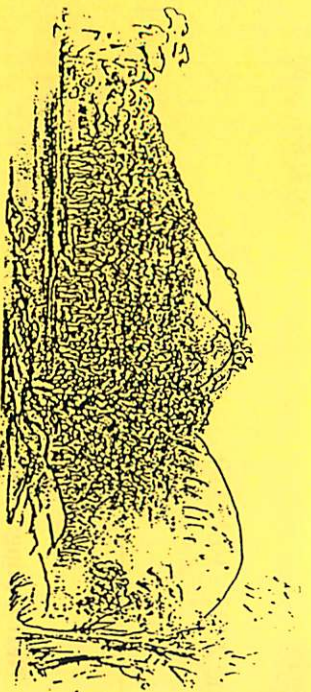
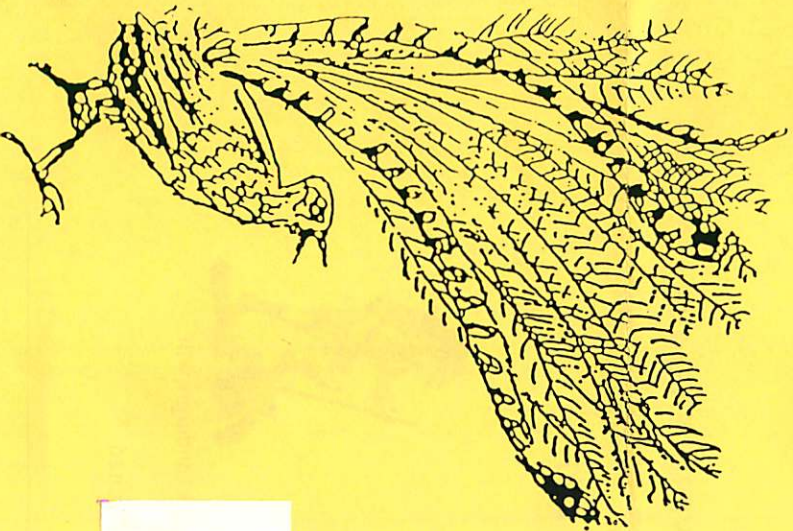


JUNE 2001
Vol 330



THE

GRANITE BELT NATURALIST



The Librarian, Field Nats
PO Box 24
SEVERNLEA Q 4352

Monthly Newsletter of the

Stanthorpe Field Naturalist Club Inc.

AIMS OF THE CLUB

1. To study all branches of Natural History.
2. Preservation of the Flora and Fauna of Queensland.
3. Encouragement of a spirit of protection towards native birds, animals and plants.
4. To assist where possible in scientific research.
5. To publish a monthly newsletter and post it to members.

Meetings:
Outings:
Subscriptions:
Address:

4th Wednesday of each Month at QCWA Rooms at 7.30pm.
The Sunday preceding the 4th Wednesday of each Month.
Single \$15.00 Family \$25.00 per annum July to June.
Stanthorpe Field Naturalist Club Inc.,
P O Box 154,
Stanthorpe Q 4380.

CLUB OFFICE BEARERS 2000 - 2001

President	Desley McDonagh	46 813074
Vice-Presidents	Millie Marsden	46 811593
	Kris Carnell	46 835268
Secretary	Liz Bourne	46 836374
Treasurer	Julia Brown	46 814540
Newsletter Editor	Margaret Carnell	46 835268
Magazine Committee	Wendy & Neil Donges	
Publicity Officer	Patience James	46 811853
Librarian	Trish McCosker	46 835371
Management Committee President, Vice-Presidents, Secretary, Treasurer		

Coming Up

Next Outing: Pikapene National Park led by Kris Carnell on June 24th.

Next Meeting: June 27th Noela Dodd

Friday Outing: July 7th Donnelly's Castle

Exhibition Wildlife Paintings: June 1st to July 3rd at Stanthorpe Art Gallery

Mail contributions to The Newsletter Editor, PO Box 33 SEVERNLEA Q 4352
e-mail orana@halenet.com.au

Deadline for next newsletter Friday 6th July 2001

SCALE OF DIFFICULTY FOR WALKS ON NATS OUTINGS

1. Flat walking, road or track.
2. Road or track, gentle hills.
3. Track, some hilly sections.
4. Track, some steep sections.
5. Cross country, easy open forest, gentle slopes.
6. Track, steep sections common, with steps.
7. Cross country, some hills, some thick undergrowth.
8. Cross country, steep sections with scrambles over rocks etc., and some thick undergrowth.
9. Cross country, steep, hilly, rough, thick undergrowth.
10. Mountain climbing, hard going, higher level of fitness or plenty of time required.



RAFFLE RESULT

Thank you to everyone who donated goods for our raffle and those people who sold tickets.
The hamper was won by Margaret Osborne. We raised \$650.00 for our funds.
This will allow us to stay in credit and still pay our incorporation fees and public risk insurance.

FRIDAY OUTING 7TH JULY

The next weekday outing on Friday July 7th is to Donnelly's Castle. Please meet Joan Stevenson at Weeroona Park at 11.30am and bring lunch.



Report on the May Outing to Mt Mitchell

Is it just my imagination, but is the Sunday before the fourth Wednesday of every month a less than perfect day for weather? Around twenty Stanthorpe members and six from the Fassifern Field Naturalists' Club attended the May outing to Mt Mitchell. This collection of hardy walkers attended, despite a worrying forecast of increasing rain with moderate to heavy falls by day's end. After members joined the procession at Stanthorpe, Warwick and finally, the picnic ground at Cunninghams Gap, we contemplated the day ahead as the clouds rained on our morning tea. As a result of the inclement weather, the unusual decision was made to allow members to choose how they would spend their day. This resulted in one of the most widely dispersed groups that I have ever witnessed at a Field Nats outing.

About a third of the group made the day a short one and explored the discovery walks that start and finish at Cunninghams Gap. They were rewarded with misty views at the Fassifern Valley lookout and the magic that only a damp rainforest can produce.

Despite the forecast, the remainder of the group chose to tackle Mt Mitchell. We started walking with some optimism as the cloud looked like lifting. At the front, Col Hocking & son, Robert set a cracking pace. They were using the walk as a training day for a future backpacking adventure. At the opposite end were the members from Boonah. Their intense interest in the flora & fauna led them to make a very leisurely ascent of the mountain. Soon after the walk began, the rain returned and set in for a couple of hours.

As Narelle & I approached the summit, we met several members returning, most a little disappointed that they were denied views of any consequence. We too expected a summit draped in cloud. Unexpectedly, within a few hundred metres of our goal, the rain stopped and the cloud parted to reveal a splendid sight. The mountains, washed of their usual haze, were pin sharp clear. Cloud drained from the mountain peaks and fingered its way through the mountain valleys far below. Overhead, the thick upper layers of cloud enhanced the rich greens, blues and greys of the washed landscape. We felt privileged at being able to witness the spectacle of a fluid landscape being continuously remodelled. With our cameras working overtime, we were disappointed that no other members arrived during this breathtaking, 15-minute window of opportunity. As the valley cloud again scaled the peaks, the rain returned, and with it, the next group of walkers. The brief glimpse of the ethereal landscape we had been privileged to witness was once more hidden from view.

The decent was again damp as rain fell off & on for the remainder of the day. As many shivered in the car park while waiting for friends & partners to return, there were few complaints. Walking in the rain brings with it its own charm. In the past, I have climbed Mt Mitchell on fine days. This wet experience was easily the best one ever. A day on a mountain peak with cloud dancing in gullies below is an experience that is always very special.

David Wilson

Bird List Mt Mitchell Outing

The following bird list was provided by Wendy Dunn from the Fassifern Field Nats who joined us at Cunningham's Gap:

Australian king parrot, fan-tailed cuckoo, shining bronze cuckoo, white-throated treecreeper, spotted pardalote, white-throated scrubwren, large-billed scrubwren, brown gerygone, brown thornbill, bell miner, Lewin's

honeyeater, white-naped honeyeater, eastern whipbird, varied sittella, golden whistler, grey fantail, pied currawong, satin bowerbird, red-browed finch, mistletoe bird, silvereye, bassian thrush.

We also saw fairy wrens but couldn't identify them.

We saw straw-necked ibis, and spurwing plovers on the way down, and a raptor which we couldn't positively identify on our way home through Freestone. – Editor.

**Minutes of the Meeting of the Stanthorpe Field Naturalist Club Inc
held in QCWA Rooms, Victoria St., Stanthorpe on Wednesday 23 May, 2001**

Opening: The meeting opened at 7.35pm with Vice-President, Millie Marsden, welcoming members, especially Tom Archer and those from Warwick.

Attendance: There were 22 present at the meeting and 6 apologies as per the attendance book.

Minutes of the previous meeting: The minutes of the last meeting, held on 25 April, 2001 were received as a correct record of the meeting on the motion of Rob McCosker, seconded by Col Hocking. Carried.

Business Arising from the Minutes:

1. Raffle Report

Kris Carnell said that ticket sales had been going very well and thanked Millie for her efforts. So far, over \$500 worth of tickets have been sold. Kris said he was able to attend the drawing of the raffle on 31 May at 3pm.

Correspondence:

Inwards:

1. Toowoomba Field Naturalists Club – *Darling Downs Naturalist* - May
2. Toowoomba Bushwalkers Club - *Footprint* - May
3. Murrumbidgee Field Nats – *Murrumbidgee Naturalist*- May
4. Qld Naturalists Club – *QNC News* – May/June
5. Hunter Hall Investments – ethical investing
6. Samson Total Technology – invoice for \$33.14
7. Stanthorpe Camera Club – cheque for \$24.75 as half PO box rental
8. Stanthorpe Art Gallery – invitation to opening of exhibition on 1 June

Outwards Correspondence:

1. Community service announcements for outings and meetings

This correspondence was accepted on the motion of Rob McCosker, seconded by Kris Carnell. Carried.

Financial Statement for the period from 25/4/01 to 23/5/01:

Balance as at 25/4/2001 \$ 225.96

Receipts:

Room rent collection	7.50	
Donation (from Riley and Hartman)	<u>40.00</u>	
	<u>47.50</u>	<u>47.50</u>
		\$ 273.46

Expenditure:

Room rent	10.00	
Magazine postage	32.00	
Samson Total Technology	41.47	
Govt tax (May)	<u>0.60</u>	
	<u>\$ 84.07</u>	<u>84.07</u>
		<u>\$189.39</u>

Balance as at 23/5/2001 is \$189.39

This report was received on the motion of Julia Brown, seconded by Dave Bright. Carried.

Accounts for payment:

Room rent - QCWA	12.50
Magazine postage	32.00
Samson Total Technology	33.14
Petty cash – Liz Bourne	10.00

These accounts for payment were approved on the motion of Rod Hutchin, seconded by Jean Harslett. Carried.

Outing Report:

Lanakai

Kris Carnell reported on the campout to Lanakai on 5-7 May and suggested a possible future canoe trip there by the Club. The lack of birds seen during the outing was surprising.

Mt Mitchell:

Despite rather wet and cloudy conditions, 25 – 30 people came on this outing, including five from the Fassifern Field Naturalists Club. Some got good views from the peak during a break in the weather.

Pre-outing Reports:

The next outing on 24 June coincides with the start of the school holidays and was to have been to the Moogerah Lake area, led by Peter Andrewartha. As he is unable to now lead this trip, Kris Carnell offered to do a pre-outing trip to Mt Piccabeen and invited others to join him.

The proposed outing to Bald Rock National Park in July will now cost \$6 per vehicle so it is proposed to go to an area east of Billygoat Hill in Girraween National Park instead.

Specimens:

1. Rob McCosker had photos taken on the Lanakai outing
2. Rod Hutchin had a hybridised Banksia and a kangaroo paw
3. Jean Harslett had a photo of a pine cone taken in New Zealand
4. Millie Marsden had a photo of Rene Thompson on the Mt Mitchell track.
5. Kris Carnell had a copy of a tourist map from Tabulum to Woodenbong which is now out of print

Next Meeting:

Nola Dodd is scheduled to present slides at this meeting but it is uncertain whether she will be available. Millie is to contact her.

Peter Robinson will do a presentation on South Africa at the July meeting.

The meeting closed at 8.16pm.

David Wilson then gave members a very interesting and informative presentation of slides depicting the earth's natural elements.

More Art Gallery News

I do hope the Field Nats members have been to see the Fleay exhibition at the gallery. My favourite is the wedge tailed eagle chick. Though he is really just a ball of fluff, he has a very sharp beak.

Do you remember Ken Peters who showed his wonderful photos of Antarctica at one of our meetings? Well, the other exhibition at the gallery is photos by him. Called the Red, White and green Trilogy, the red ones are earth and rocks in Western Australia, the white of course, is Antarctica, and the green is rain forests and waterfalls taken from the Border Ranges, right up to the Atherton Tableland.

Please do try to see both these exhibitions.

Hours at the gallery are:	Weekdays	10.00am to 4.00pm
	Saturdays	1.00pm to 4.00pm
	Sundays	10.00am to 1.00pm

This exhibition ends on the 3rd July.

Patience James

OUTING TO PIKAPENE STATE FOREST & NATIONAL PARK– 24TH JUNE

The outing on 24th June will be to Pikapene National Park, which is a newly declared park in northern New South Wales. This will take the place of the outing to Moogerah. Pikapene is about 20 kilometres from Tabulum. The major forest ecosystem is a hoop pine dominated rainforest. Mt Pikapene National park protects the largest area of lowlands grey box and is the only new reserve to protect the restricted steel box/craven grey box forest ecosystem.

As agreed at the meeting this will be a pre-outing to have a look at the area, with a view to maybe camping at the forestry rest area. We will leave Weeroona Park at 9.00am, pick up any Tenterfield members on the way, and stop for morning tea at the Girard State Forest rest area. We'll continue on towards Tabulum, Plains Station and Yates Crossing, and hopefully will get to Pikapene in time for lunch. The day's outing will be fairly flexible as far as time is concerned.

Kris Carnell

We received the following letter from Desley at the beginning of June via email. Thought you would all enjoy hearing about her travels so far.

BUTE IS BEAUTIFUL!

Greetings from the beautiful Isle of Bute. So far I have seen much beautiful scenery and taken lots of photos. Got the first box of slides back today – most of them Singapore – and I am very pleased with them. There was a postal strike which held them up but now I know what the Konica 120 can do.

The adventure began with a 3 and a half hour delay on the Singapore International Flight, so I had a very long wait in the Brisbane terminal. Met some interesting people while I was waiting. They now combine Lufthansa, SIA and Ansett into one flight so they are all Sardine class. I had requested low fat meals for the flight and they were excellent. I noticed that the cabin staff were supplying lots of drinks of water and not encouraging so much alcohol. They also showed videos of exercises to do to reduce the risk of DVT. Arrived in Singapore at half an hour after midnight their time, half an hour after 2am our time. The young man sitting in front of me had the seat back most of the time so I am glad that I had an aisle seat. As I said Sardine class.

I did a cruise on the Singapore harbour on the afternoon before I flew out on a boat which is a replica of an old one. It was quite remarkable – the cruise will be remembered for a long time and the slides which arrived today seem pretty good.

The flight from Singapore, via Amsterdam to Manchester was exceedingly tiring, particularly the leg from Singapore to Amsterdam. Once again three airlines combined so again Sardine class. Full plane to Amsterdam - almost empty from there to Manchester. The connection to Glasgow was very tight – a real rush and the jetlag didn't help. Judith met me at the Glasgow airport. She took a week off and hired a car so the next few days were great. We went up to Rhubodah on the top end of the Isle, crossed the ferry to Colinton – one of the shortest ferry trips in Europe – 5 minutes and up to Benmore Botanic Gardens. There is an avenue of massive Californian Redwoods which were planted in the 1850s, even a Tasmanian hillside planted with 'antipodean' plants. We also visited Robbie Burns' cottage at Alloway and 'Vikingar!' on another trip to another area. The history of this area has many Viking facts which I find fascinating. 'Vikingar!' at Largs gives a very good audio visual presentation of that history.

Rothsay Castle, here on Bute is another interesting place. It was built of such soft stone that, as the locals were pouring hot pitch on the invaders, the Vikings were cutting their way through the stone walls! The castle has a moat and a chapel and I enjoyed an afternoon there. Good reflections in the moat.

Megan Goulter from The Summit and working at Belhaven School at Dunbar – other side of Edinburgh – came over last weekend. We had a good time together. The weather was magic. We went to Kilchattan Bay by bus and walked around to a lighthouse. Sea birds and sailing boats and islands and bays and little black faced lambs and yellow irises growing wild – what a sight! The yellow gorse is colouring the landscape and everywhere there are small flowers growing. Spring has sprung here. Megan was speaking to her mum on the phone and snow was predicted for Stanthorpe. Poor people!

Some of you may have had some of this news already but this is the first chance my busy Judith has had to help her computer nearly illiterate Aunty Des. We are going to Glasgow on Saturday to see the Shinty finals and then on to Edinburgh together to see that city and go to Gardening Scotland 2001. The weather has been very kind even some Australian weather.

Will sign off now.
Love from *Desley*.