

The Granite Belt Naturalist



Mail Address: Stanthorpe Field Naturalist Club Inc, PO Box 154, Stanthorpe Qld. 4380
fieldnats@granitenet.com.au

Web site <https://mysd.com.au/fieldnats/>

AIMS OF THE CLUB

1. To study all branches of Natural History
2. Preservation of the Flora and Fauna of Queensland
3. Encouragement of a spirit of protection towards native birds, animals and plants
4. To assist where possible in scientific research
5. To publish a monthly newsletter and post it to members



Meetings 4th Wednesday of each month at Uniting Church, Small Hall, 113 High Street, Stanthorpe, at 7.30pm
Outings: The Sunday preceding the 4th Wednesday of each month (Saturday outings as pre-arranged)
Subs: Single \$20.00, Family \$30.00 per annum, July to June

CLUB OFFICE BEARERS – 2020/2021

President	Peter Haselgrove	46837255
Vice-presidents	Kris Carnell	46835268
	Leon McCosker	46811737
Secretary	Lyn Collins	0428810156
Treasurer	Gunter Maywald	46810674
Newsletter Editor	Margaret Carnell	46835268
Publicity Officer	K & M Carnell	46835268
Librarian	Laura Maywald	46810674

The Club thanks the Queensland Country Credit Union for their donation that enabled us to buy a printer.

Stanthorpe Field Naturalists is a group member of Granite Borders Landcare.

*Management Committee: President, Vice-Presidents,
Secretary, Treasurer*



**SCALE OF DIFFICULTY FOR WALKS
ON NATS OUTINGS**

1. Flat walking, road or track
2. Road or track, gentle hills
3. Track, some hilly sections
4. Track, some steep sections
5. Cross country, easy open forest, gentle slopes
6. Track, steep sections common, with steps
7. Cross country, some hills, some thick undergrowth
8. Cross country, steep sections with scrambles over rocks, etc., and some thick undergrowth
9. Cross country, steep, hilly, rough, thick undergrowth
10. Mountain climbing, hard going, higher level of fitness or plenty of time required

Coming Up

Sunday 20th June: Rock Slab and Signboard with Kris & Margaret Carnell
Wednesday 23rd June: *The Kimberley 20 Years Ago* with Rob McCosker
29th July: AGM and *Remember Last Year*

**Deadline for next newsletter
15th July 2021**

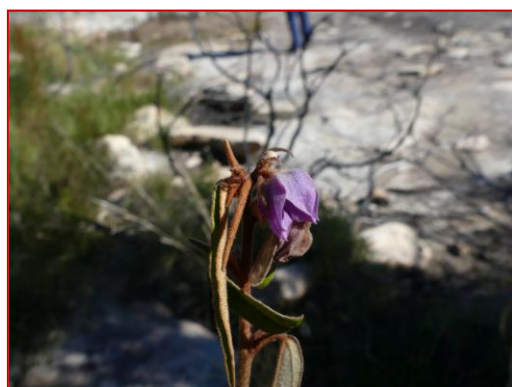
Pre-Outing Report – Rock Slab and The Signboard – 20th June 2021

Leaders: Kris & Margaret Carnell

The outing on 20th June is to a rock slab and The Signboard in Mt Norman Road, Girraween. We will meet at Weeroona Park at 9.00am and travel to the junction of Pyramids Road and Mt Norman Road. The slab is not far from the corner. Thanks to Gunter for leading the Nats from town. If travelling from the south, go past the Visitor Centre at Girraween and travel for 5kms to the road junction. We will have smoko at the cars and carry lunch. A moderate degree of fitness is required and we would recommend using a walking pole.



Rock Formation on The Signboard



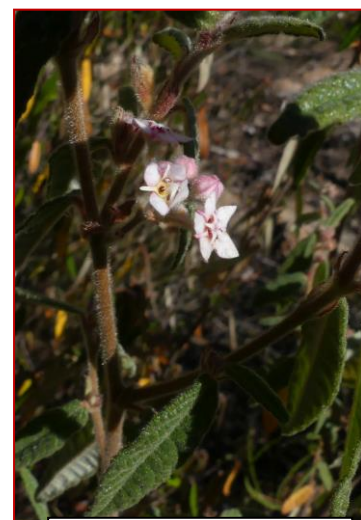
Seringia hillii bud

We did the pre-outing on a glorious sunny day when you could see for miles. As you go up the first slab you have good views of The Pyramids. There was a lot of *Acacia granitica* growing in hollows in the rock and we were very excited to find a couple of stands of *Seringia hillii* (formerly *Keraudrenia hillii*) growing towards the top of the slab. In amongst one stand there were several plants of *Commersonia brevisetia* (formerly *Rulingia hermannifolia*) which is from the same family,

and is listed as near threatened. The common name is Wrinkled Kerrawang. The

Leionema rotundifolium was just starting to bloom so there should be some out for the outing. The other predominant regrowth is *Acacia adunca* (Wallangarra wattle) and *Hardenbergia violacea* (Sarsaparilla vine).

The first time we encountered *Keraudrenia hillii* was after a hot fire in 2002 on our mountain. It was there for a few years and then died out, waiting for the next fire.



Commersonia brevisetia

We then made our way towards the east to The Signboard and stopped for lunch looking to Bald Rock beyond, and to the north we could see some of the peaks of the Main Range, rather hazy in the distance. This is where we plan to have lunch on the outing, providing we don't spend too much time "nating" and need it sooner. There is more exploring to be done at the top of the signboard if time permits. We will then make our way down the northern side of The Signboard to the base and then walk alongside the base. At the base of the slab there was quite a lot of *Solanum cinereum* with round fruit ripening.



Solanum cinereum

The track for the Peak Trail passes close to The Signboard and we will walk back along it to Mt Norman Road and then about 250 metres back to the cars.

Outing to Toowoomba Parks 23rd May 2021



Bunya Pines - Boyce Gardens

Although only five members met at Weeroona Park, others joined along the way for a total of 12 people for the outing on which we enjoyed perfect weather. Our first stop was the Steele Rudd Memorial Park at East Greenmount which commemorates the fictional Rudd family's life on their selection, based on the real life of author Arthur Hoey Davis. Enclosed in post and rail fencing are a reconstructed slab dwelling, a cattle yard with milking bail and several pieces of farm machinery as well as picnic tables, a BBQ, toilets and a variety of trees planted as memorials. We spent a little time here having morning tea and reading the interpretive signs before continuing along the highway to Federation Park at Vale View. This popular stopping place on the Drayton Connection Road has a row of Kauri Pines planted for past Prime Ministers of Australia, with their details on a plaque at the base of each tree. We set off on the paved walking track, a loop of almost 1km long, which took us down to a waterhole and small

waterfall in the creek, then across the creek and back to the car park for lunch.



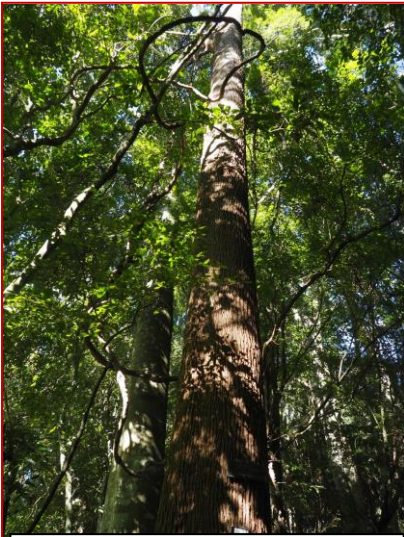
Norfolk Island Pines, Freneau Pines Park

Near the start we passed a group of Cooba, *Acacia salicina* in flower, and near the creek we couldn't decide if the large gum tree was a Forest gum *E. tereticornis* or Red gum *E. blakelyi*. At our next stop, Freneau Pines Park, we walked down the avenue of Norfolk Island Pines to the Hursley Road entrance from which we could get a better perspective of this Heritage listed

planting. We then walked up to look at the *Phytolacca* tree, *Phytolacca dioica*, with its massive buttressed roots, before returning to the cars to drive to the Mt Lofty Lookout.



Phytolacca Tree



Silky Oak Tree – Boyce Gardens

We could see the water tower and the tops of the pines in the previous park from here, and Errol pointed out the water storage tank next to the car park where there was once a “Haunted House”, and as a lad he had ridden his bike there and paid threepence to take a tour of the house. We then drove downhill a little to the Boyce Gardens in Range Street. Although there were few flowers on the amazing range of exotic plants from all over the world the rainforest walk was really impressive. We made our way back through the manicured lawns and garden beds to the house and back to the cars at about 3.00pm to head home.

Bird List – Pale-headed rosella, Grey butcherbird, Striated pardalote, Grey fantail, Scrub turkey.

Rob McCosker

Spottings

Thanks to Peter Haselgrove for the following information:

A recent drive out along the Texas road shows the effect of the good autumn rains. The White Box was flowering really well, the Tumbledown Gum is heavily budded up and the large gums at Pikedale (possibly Forest Red Gum) are also covered in bud. Further out the patches of Mugga along the road are in flower and it looks like being a really good year for honeyeaters (and birdwatchers).



Mugga Ironbark



Tumble Down Gum Buds

AGM and Remember Last Year
July 28th 2021

If you have photos for *Remember Last Year* could you please give them to Kris Carnell by 20th July.

Contact Kris at oranakm@bigpond.com to make arrangements for him to pick them up or phone 46835268.

**Minutes of the Meeting of the Stanthorpe Field Naturalist Club Inc.
Held in Uniting Church Hall, Stanthorpe on Wednesday 2nd June 2021**

Meeting opened: 7.32pm

Attendance: 16 Apologies 3 as per attendance sheet

Minutes of the previous meeting:
confirmed by Kris seconded by Lesley Carried

Business arising from the minutes: nil

Correspondence: as per folder
moved by Rob seconded by Gunter Carried

Financial Report: Bank Balance \$1851.84, Petty Cash \$88.20
Account for HDMI cable \$15 paid leaving Total Balance of \$1925.04
Total Club members 40 with 3 in arrears
moved by Gunter seconded by Lesley Carried

Outing Reports: Rob McCosker reported that 12 people attended the May 23rd field outing visiting four Parks on the way to, and in Toowoomba, including the Boyce Gardens and Rainforest.

Pre-outings: As David Wilson was unavailable for the scheduled outing to Goomburra on 20th June, Kris volunteered to swap his proposed outing to the Rock Slab and Signboard area in Girraween.

General Business: August Campout to Barakula near Chinchilla cancelled due to drought.
Information about the Great Southern Bio-Blitz on 22-25th October to be presented to the next meeting to decide if the Club wishes to take part.
Motion re ANN Get-together
At the February meeting of the SFNC, the membership agreed and voted on our Club hosting the biennial ANN Get-together in 2022.
The following members have volunteered **to be on the** ANN2022 planning committee: Lyn Haselgrove – Coordinator/Secretary, Lesley Saunders - Minute Secretary, Gunter Maywald - Treasurer/web site, Teresa Clifford - Accommodation and Catering, Rob McCosker – Program, Vacant - Transport

Motion: The Club nominates these members as the planning committee for ANN2022 Get-together.
Moved – Peter Haselgrove Seconded – Rob McCosker Carried

A separate checking sub-account (#10254311) for dealing with expenses and subscriptions for the ANN2020 was set up in 2019 within the club's Commonwealth Bank account. It is proposed that we use the same account for dealing with expenses and subscriptions for the ANN2022 Get-together. There is currently \$1800 in this account, being the remainder of the seed money provided by the ANN Central Committee in 2019 after expenditure incurred for planning the 2020 Get-together.

Motion: The following ANN Planning Committee members have access permission (ability to co-sign cheques and access via NetBank) on this sub-account: Gunter Maywald (Treasurer), Lyn Haselgrove (Coordinator), Lesley Saunders (Secretary).
Moved – Peter Haselgrove Seconded – Teresa Clifford Carried

Specimens: Janet White visiting from Tenterfield showed several Mistletoe specimens and an unidentified Eucalypt from her property.

Next Meeting: The Kimberleys 20 years ago with Rob and Trish McCosker

Meeting closed: 8.00pm

Presentation: Peter Haselgrove gave a very interesting presentation on Mistletoes outlining their distribution around the world, their methods of propagation, host tree species and their importance in the natural world for supporting bio-diversity.