



The Granite Belt Naturalist



Mail Address: Stanthorpe Field Naturalist Club Inc, PO Box 154, Stanthorpe Qld. 4380
fieldnats@granitenet.com.au@

Web site www.granitenet.com.au/groups/environment/fieldnats/

AIMS OF THE CLUB

1. To study all branches of Natural History
2. Preservation of the Flora and Fauna of Queensland
3. Encouragement of a spirit of protection towards native birds, animals and plants
4. To assist where possible in scientific research
5. To publish a monthly newsletter and post it to members



Meetings 4th Wednesday of each month at QCWA Rooms, Victoria Street, Stanthorpe, at 7.30pm
Outings: The Sunday preceding the 4th Wednesday of each month (Saturday outings as pre-arranged)
Subs: Single \$20.00, Family \$30.00 per annum, July to June

CLUB OFFICE BEARERS - 2013/2014

President	Rob McCosker	46835371
Vice-presidents	Kris Carnell	46835268
	Jeff Campbell	
Secretary	Halina Kruger	46835206
Treasurer	Leslie Saunders	
Newsletter Editor	K & M. Carnell	46835268
Publicity Officer	Errol Walker	46812008
Librarian	Trish McCosker	46835371

The Club thanks the Queensland Country Credit Union for their donation that enabled us to buy a printer.

The Club acknowledges the support of the Gambling Community Benefit Fund in the purchase of a data projector.

Stanthorpe Field Naturalists is a group member of Granite Borders Landcare.

*Management Committee: President, Vice-Presidents,
Secretary, Treasurer*



**SCALE OF DIFFICULTY FOR WALKS
ON NATS OUTINGS**

1. Flat walking, road or track
2. Road or track, gentle hills
3. Track, some hilly sections
4. Track, some steep sections
5. Cross country, easy open forest, gentle slopes
6. Track, steep sections common, with steps
7. Cross country, some hills, some thick undergrowth
8. Cross country, steep sections with scrambles over rocks, etc., and some thick undergrowth
9. Cross country, steep, hilly, rough, thick undergrowth
10. Mountain climbing, hard going, higher level of fitness or plenty of time required

Coming Up

Sunday 22nd November: Milmerrin and Mt Basalt with Jeff Campbell
Wednesday 25th November: *The Burren, Ireland* with Jeff Campbell
Sunday 6th December: Break-up at Rotary Park on Quart Pot Creek near the Information Centre commencing at 4.00pm

**Deadline for next newsletter
10th February 2016**

Pre-outing Report Milmerran 22nd November 2015

Leader: Jeff Campbell

We will leave Weeroona Park at 9.00am and stop for smoko at Inglewood, then on to Milmerran to look at murals etc and have lunch. After lunch we will go to Mt Basalt and then return home.

Mount Basalt Reserve

Mt Basalt is a unique geological and environmental landmark that features rare volcanic formations and offers a range of walking trails and a lookout with spectacular views over the farmland. It is also a vantage



point from where you can view the Millmerran Power Station and Coal Mine.

To get to the reserve head south along the Inglewood/Milmerran Road then turn left onto the Kooroongarra/Milmerran Road. Located approximately 18 kilometre from Millmerran

Photo from Royal Geographical Society of Queensland Travel Blog

Mural Trail

Follow the trail of Millmerran's historical murals, where various stages of the region's history are depicted on the side of buildings.

The Old Millmerran Butter Factory Mural depicts the development of the dairy industry. Swim costume fashions of years gone by feature on the wall of Millmerran's Swimming Pool.

The Millmerran Reservoir Mural shows the development of water in the Millmerran area or The Transport Mural shows the development of transport from the nineteenth century to the early part of the twentieth century.



Outing Report 18th October 2015 Underground Creek Girraween.

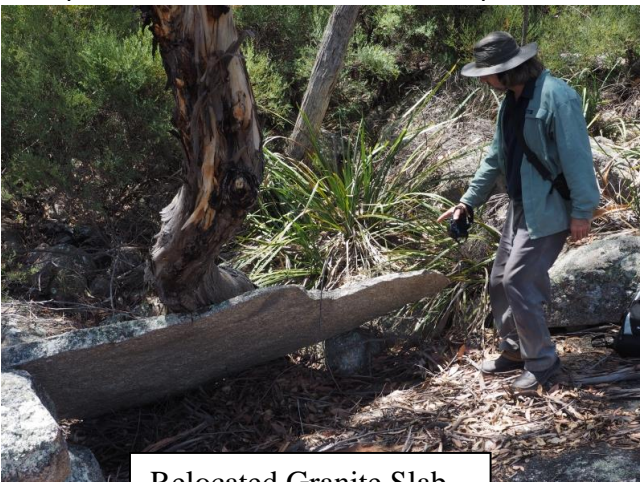


Dotted Sun Orchid

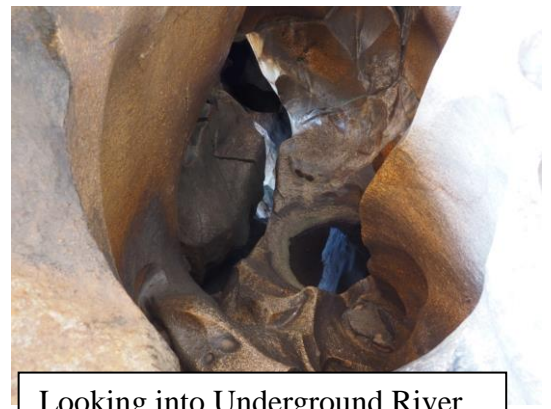
Stanthorpe members met with members of the Fassifern F N Club at Girraween NP carpark and then went on to the Dr Roberts carpark. We walked to the waterhole enjoying the wildflowers on show on the way, including the sun orchid, and had morning tea there before walking to the Underground Creek.

With such dry conditions there was a very small flow in the creek so several members clambered through the eroded granite chasms and jumbled rocks to emerge at the

top where the creek has scoured the granite slab to a depth of about 5m. Other members used the track through the bush to arrive at the same spot and we had lunch there. It was interesting to notice the extent of alteration to the landscape from the 2011 floods, with large masses of plants which once grew beside waterholes, rolled over to expose their roots, like enormous pieces of carpet.



Relocated Granite Slab



Looking into Underground River

There was also a substantial granite slab relocated some distance away in two pieces with one piece, measuring about 1.5m by 2.5m, wedged up about 40cm on another granite rock.

After lunch most of the Fassifern visitors returned to their cars to pack for home and the rest of us headed up the open granite slopes to the north. We saw a different range of plants along the way as we followed granite ledges as much as possible back to the track. We returned to the Bald Rock

Creek Day Use park for afternoon tea before heading home at about 3.00pm.

Rob McCosker

Plant list

Wild iris *Patersonia glabrata*, Spider flower *Grevillea viridiflava*, Mountain dampiera *Dampiera purpurea*, Guinea flower *Hibbertia riparia*, Sour bush *Choretrum candollei*, Hop bitter pea *Davesia latifolia*, Smoke bush *Conospermum burgessiorum*, and *C. taxifolium*, Tiger orchid *Diuris sulphurea*, Mountain violet *Viola betonicifolia*, Billy buttons *Craspedia uniflora*, Dotted sun orchid *Thelymitra ixioides*, Daisy *Brachyscome stuartii*, Ivy-leaf goodenia *Goodenia hederacea*, Pink kunzea *Kunzea obovata*, Slender stackhousia *Stackhousia viminea*, Matrushes *Lomandra longifolia*, and *L. multiflora* subsp. *multiflora*, Tall sundew *Drosera peltata*, Waxflower *Philotheca epilosa*, Grey everlasting *Ozothamnus obcordatus*, Portulaca *Portulaca bicolor*, Fruit salad plant *Leionema ambiens*, Granite heath *Micromyrtus sessilis*, Tree trigger plant *Stylidium laricifolium*, Granite boronia *Boronia granitica*, Nodding blue lily *Stypandra glauca*, Flannel flower *Actinotus helianthi*, Heath myrtle *Calytrix tetragona*, New England tea tree, *Leptospermum novae-angliae* Dogwood *Jacksonia scoparia*.

Minutes of the Meeting of the Stanthorpe Field Naturalist Club Inc. Held in QCWA Rooms, Victoria Street, Stanthorpe on Wednesday 28th October 2015

Meeting opened: 7:42 pm

Attendance: as per attendance sheet Apologies as per attendance sheet

Minutes of the previous meeting:

H Kruger moved R McCosker seconded carried

Business arising from the minutes: Nil

Correspondence:

H Kruger moved that the Correspondence accepted K Carnell seconded carried

Financial Report: \$

H Kruger moved that the Statement report be accepted G Greenup seconded

Outing Report: Outing Girraween NP "Underground creek" with the Fassifern FN

Pre-outing: 22nd Nov Millmerran with Jeff Campbell

General Business:

Apple and Grape Harvest Festival asked the club for a contribution toward the festival on the 27-28th weekend, further discussion next meeting.

Next Meeting: 25th November 2015

Next Month's Presentation: Jeff Campbell "The Burren, Ireland"

Specimens/Items of interest: Emperor moth cocoon

Meeting closed: 8.07pm

Presentation: P Andewartha "Panama"

Apple & Grape Harvest Festival

We have received a letter from the Apple and Grape Harvest Festival Committee asking the club to be involved in running an event on the weekend of 27/28 February to help promote the festival, the district and the club. It is the 50th anniversary of the festival which will run over ten days. For our club, the committee is suggesting a competition that will attract locals and visitors and this event can contribute to the week-long programme

This will be discussed at our meeting on 25th November, so put on your thinking caps to see if you can come up with an idea of what the club might be able to do.

WANTED

ARTICLES FOR THE NEWSLETTER

PLEASE CONSIDER SUPPLYING ARTICLES FOR THE NEWSLETTER EVEN IF YOU ARE NOT THE LEADER. WE'D LIKE TO HEAR HOW YOU ENJOYED THE OUTING AND WHAT IMPRESSED YOU.

We are collecting photos for *Remember Last Year* after each outing to make it easier to compile the program. Thank you to those people who have already supplied theirs.

Please email to Kris at oranakm@bigpond.com or give them to him on a USB drive.

Thanks to Marc Newman for Article 8 of his series about native bees. (This is out of order. We have not had number 7 yet.)

Specialist Bees



Many Australian native bees are generalists when it comes to the flowers that they forage on. They have preferences but it's always a matter of what is available, whether it is nectar producing or pollen producing or both. Exotics and weeds are often favoured, for example *Coreopsis* and *Salvia* can be popular with certain native bee species. There are, however, some bees that specialise on a specific flower and have evolved specific attributes to take advantage of that specialisation.

One such group of bees are the so called *Persoonia* bees which like to forage on the *Persoonia* genus of shrubs and small trees. These plants are better known as Geebungs or if you are in Western Australia as Snottygobbles (possibly so named from the texture of the insides of the fruit). The photo shows a *Persoonia* bee (*Leioproctus (Cladocerapis) incanescens*) pushing its head between one of the four stamens and the central style. With this flower the stamens carrying the anthers have deposited pollen on the end of the style just before the flower opens but the stigma on the end of the style is not mature at this stage so pollination doesn't occur. The pollen is thus available for bees to transport to flowers with a mature stigma for pollination. These *Persoonia* bees have evolved a smooth sloping face enabling them to push down into the flower to access the nectar. Note also the collection of

pollen on the Scopa (specialised hairs) on the hind legs in the photo.



Another Persoonia bee (*Leioproctus (Cladocerapis) bipectinatus*) is interesting in that it is one of the very few bees to have branched antennae as can be seen in the second photo. This is a male bee resting on a Geebung leaf after chasing around looking for females. It has pollen on the top of its thorax so it can also perform pollination service even though it is only wanting nectar as an energy source. Geebungs are flowering in January in this region so if you spend 10 minutes beside a flowering one you are almost bound to see a Persoonia Bee.

End of Year Break-up

6th October 2015

From 4.00pm to 8.00pm

Rotary Park, 28 Leslie Parade Stanthorpe



shutterstock - 200448623

We will walk to Heritage Park and the Little Red Bridge before returning for a Barbeque at around 5.30pm

To be followed by a presentation of Jean Harslett's *Mailboxes* by Errol Walker.

Members bring their own food and chair etc for the BBQ
There will be an urn for tea and coffee.