



The Granite Belt Naturalist



Mail Address: Stanthorpe Field Naturalist Club Inc, PO Box 154, Stanthorpe Qld. 4380
stanthorpefieldnats@gmail.com

Web site <https://mysd.com.au/fieldnats/>

Please send contributions to the magazine to editorsfnc@gmail.com

AIMS OF THE CLUB

1. To study all branches of Natural History
2. Preservation of the Flora and Fauna of Queensland
3. Encouragement of a spirit of protection towards native birds, animals and plants
4. To assist where possible in scientific research
5. To publish a monthly newsletter



The Pyramids, Girraween National Park

Meetings: 3rd Wednesday of each month at
Uniting Church, Small Hall, 113 High Street
Stanthorpe at 7.30pm

Outings: The Sunday following the 3rd Wednesday
of each month

Subs: Single \$20.00, Family \$30.00 per annum, July
to June

CLUB OFFICE BEARERS – 2023/2024

President	Leon McCosker	46811737
Vice-presidents	Holly Patti	
	Robyn Murray	0488515311
Secretary	John Salini	0400805236
Treasurer	Lynette Haselgrove	0409006063
Newsletter Editor	Margaret Carnell	0427835268
Publicity Officer	Theresa Clifford	0413008602
Librarian	Rob McCosker	46835371

Stanthorpe Field Naturalists is a group member of
Granite Borders Landcare.



Management Committee: President, Vice-
Presidents, Secretary, Treasurer

**SCALE OF DIFFICULTY FOR WALKS
ON NATS OUTINGS**

1. Flat, well-formed track, no steps, 5km or less. Clearly signposted. Suitable for wheelchairs with assistance.
2. Formed track. May have gentle hills and some steps. Clearly signposted. No experience required
3. Formed track, some obstacles, 20km or less. May have short steep hills and many steps. Some experience recommended.
4. Rough Track. May be long and very steep with few directional signs. For experienced bushwalkers.
5. Unformed track. Likely to be very rough, very steep and unmarked. For very experienced bushwalkers with specialised skills.

Coming Up

Wednesday 20th March: *Swift Parrots and Regent Honeyeaters* with Holly Patti.

Sunday 24th March: *Morgans Gully* with Leon McCosker

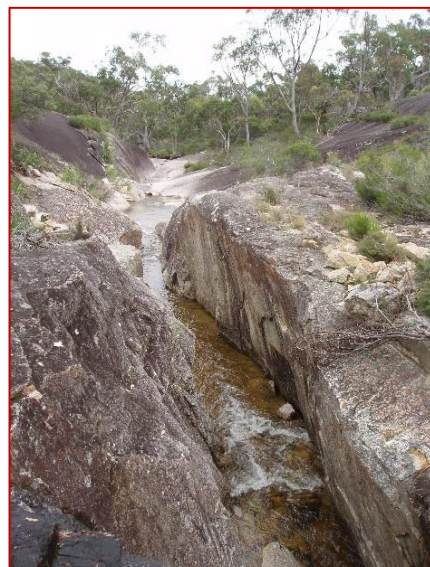
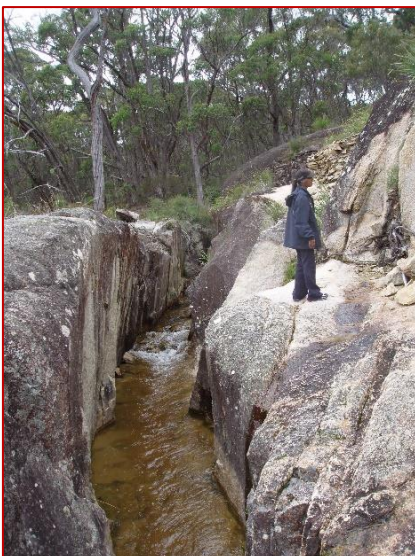
**Deadline for next newsletter
10th April 2024**

Outing to Morgan's Gully 24th March 2024

I did a trip there late last year and was planning to depart Weeroona Park at 9.00am as usual to meet up at the Morgan's Gully parking area for morning tea. We would then head across to the mining excavation area to marvel at the effort put in to divert the water flow through solid granite for the gold mining operation. I was then hoping to continue upstream along the gully to find a spot to cross it through the scrub then head north back on the opposite side, downstream, to see the cutting from a different perspective. We would then make our way down the granite slopes to find a spot to cross the gully again near where it meets the Boonoo Boonoo River, then walk back up to the cars. There is plenty of scope to wander along the water holes and over the extensive rock slabs in the area before returning to the cars for lunch then perhaps drive to the Falls before returning home. There is an \$8 per car entrance fee to Boonoo Boonoo NP.

At this stage I can't commit to leading the outing due to a severe lumbar spine problem and Leon has offered to lead it for me.

Rob McCosker



Fire Ant Training

Thanks to Holly for sending details of Fire Ant training for residents. If you hold down the control button and click on the link below it will take you to the site.

- [Fire ant training for residents](#)

Wildlife in Bridge Street

I'm sure someone must have said, "Plant a garden and they will come", because that's what has happened at our place. It obviously doesn't have to be a native garden as we have a mixture of natives and exotics. Most of the natives take longer to come into flower, whereas we can plant exotic annuals and have them flowering within weeks.



Red-winged Parrot



King Parrots in the sunflowers

We planted sunflowers and as I said in the February newsletter, the red-winged parrots started pulling the petals off when the flowers had just opened. Fortunately they didn't come back until some seeds had formed, and they have been feasting on them early in the morning or late in the afternoon, as have the king parrots.

This morning there were two eastern rosellas eating the seeds in the cosmos.



Rosellas in Cosmos

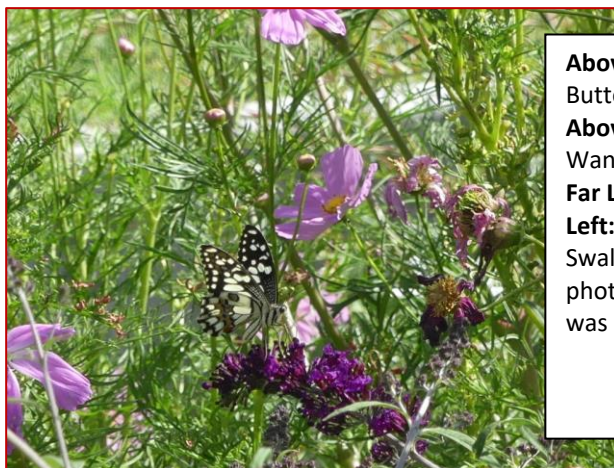
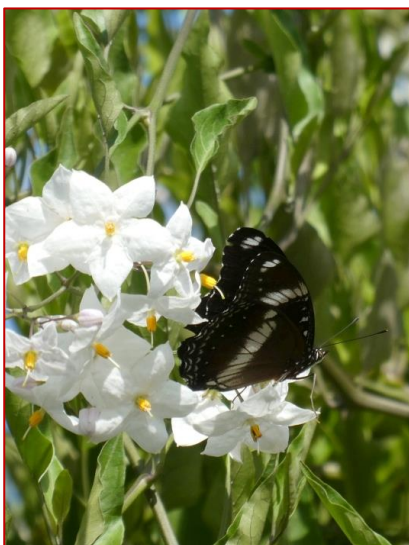
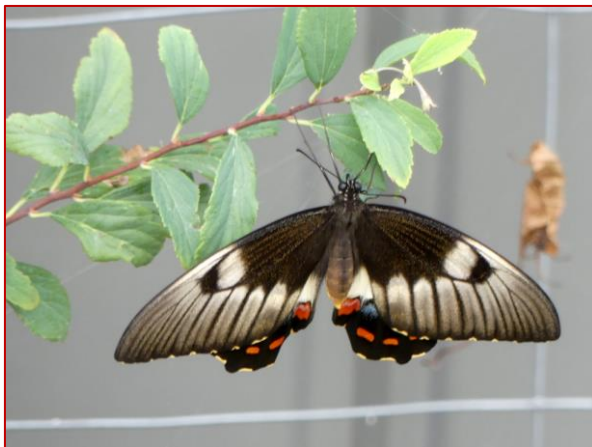
We see them quite often in the gum tree next door and one was on the fence eyeing off the sunflowers I thought. We haven't seen them in the sunflowers at all so far. The noisy miners built a nest in the gum tree and seem to live there. As well there are butcher birds that use the bird baths and give a concert at least once a day. The rosellas are not the only ones who like the cosmos. The butterflies love them as well as the buddlejas. We see a lot of Meadow Argus (*Junonia villida*) and Cabbage White (*Pieris rapae*) butterflies and were excited to have a visit from a male Common Eggfly (*Hypholimnas bolina*) who

would not stay still long enough to take a photo with his wings open, so we had to make do with the folded wings.

I wish the rest of the butterflies would take a lesson from the Common Grass Dart, *Ocybadistes flavovittatus* which sat quietly on a buddleja while I took its photo. We have had Light Green Triangles (*Graphium eurpylus*), Common Crows (*Eupolea core*), Lesser Wanderers (*Djanaus petilia*), Glasswings (*Acraea andromacha*), rather tatty Painted Lady (*Vanessa kershawi*) and a small brown butterfly or moth resting on a marigold.



Above Left: Cabbage White Butterfly
Centre: Common Grass Dart
Above Right: Meadow Argus



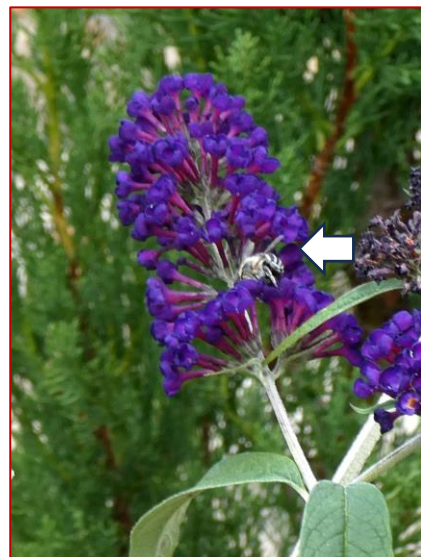
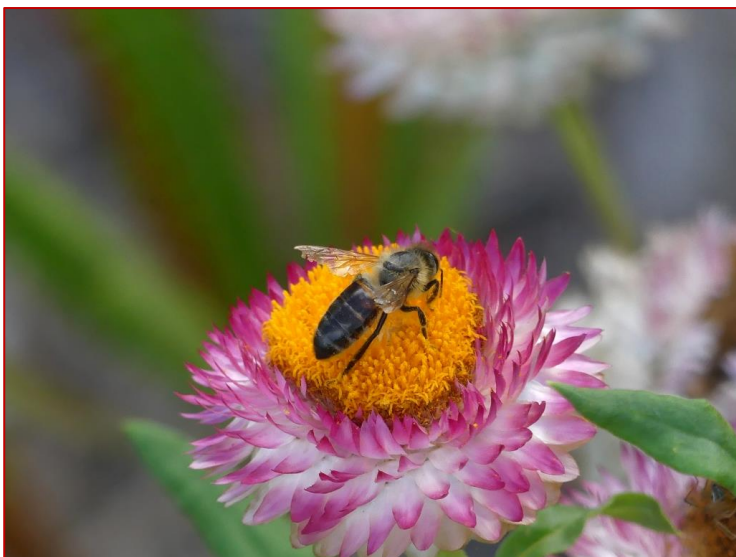
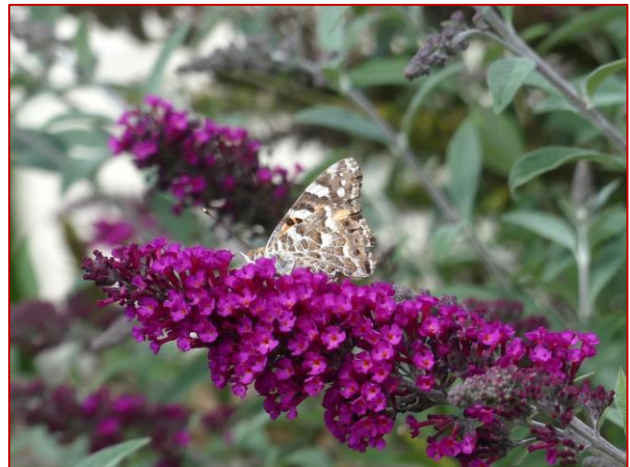
Above Left: Orchard Butterfly (female)
Above Right: Lesser Wanderer
Far Left: Male Eggfly
Left: Chequered Swallowtail. It photographed white but was actually yellow.

As well as the butterflies there have been a lot of other insects to observe, as well as a red-backed spider that had caught a caterpillar in its web. I have to admit that after taking photos we despatched the spider.

The honeybees have been very busy and we have seen a blue-banded bee several times. It is very quick and hard to photograph but we managed to get a reasonable photo which shows it's blue bands. Two different wasps have been feeding on the flowers but we haven't been able to identify them. One of them has very distinctive markings on its face. It was quite small, about the size of a paper wasp and may have been a variety of paper wasp. When I was trying to photograph the Common Crow I managed to get a photo of a damsel fly and on another occasion a large fly of some sort landed on a statice flower.

We are very happy to have so much wildlife in our suburban garden. There is much more than we expected to have in town, especially as the garden is just under 12 months old. Thanks to Kris for the bird photos and several of the insects.

Margaret Carnell

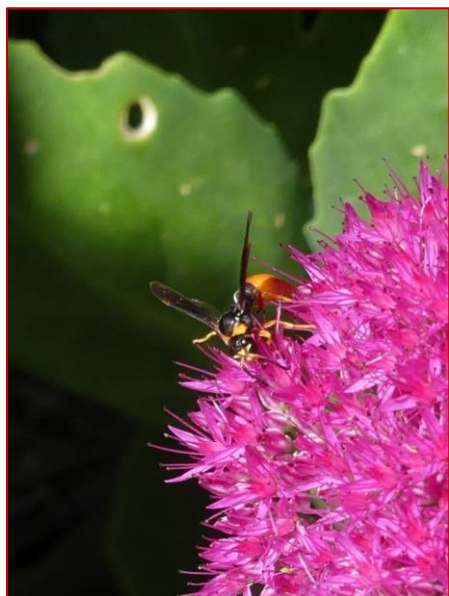


Top Left: Painted Lady

Top Right: Painted Lady with folded wings

Above Left: Honeybee

Above Right: Blue-banded Bee. It is a little smaller and very active with a very loud buzz.



Top Left: Damselfly on stem
Top Centre: Small unidentified butterfly or moth
Top Right: Light Green Triangle
Above Left: Small wasp
Above Right: Bigger wasp
Right: Unidentified fly on statice
Bottom Left: Red-backed spider with caterpillar
Bottom Right: Glasswing



Minutes of Meeting of the Stanthorpe Field Naturalist Club Inc.

Date: 21st February 2024

Meeting opened: 7:32 pm

Attendance and Apologies: As per Attendance Book

Minutes: Minutes from the November Meeting read.

Moved: Lyn Seconded: Holly Carried

Business arising from the Minutes: Nil

Correspondence: Commonwealth Bank Statement, Post Office Box Account, and Granite Borders Land Care Notice of Annual General Meeting.

Moved: Lyn Seconded: Gunter Carried

Financial Report: Lyn reported a current Bank balance of \$2,824.39, which includes subs of \$20.00, less Hall Rent of \$125.00.

Moved: Lyn Seconded: Kris Carried

General Business arising: With Lynette currently not well, Lyn has agreed to step in as Treasurer until the AGM. Kris moved that Lyn's name be added to the bank signatories.

Seconded: Margaret. Carried

Outing Report: Leon reported on the outing to the Mole River Arsenic Mine and Mole Station Native Nursery, with Sarah and David Caldwell - full report in Feb. Newsletter.

Christmas Break up: This was a pleasant afternoon at John Salini's property with an interesting walk, followed by a bar-b-que - full report in the February Newsletter.

Next Outing: Koreelah and Queen Mary Falls - 25th February. As the number planning to go was low, it was decided to postpone this trip to a later date.

March Outing: Morgan's Gully.

February Presentation: Gunter Maywald showed us some images of his and Laura's trip to Western Australia last September, the perfect time to see the unique WA flora which was well represented, particularly the spectacular Banksias. As well as birds, spiders, reptiles and lizards, Gunter also photographed many bugs and insects, of the colourful, fascinating, and weird varieties, some about which the experts know very little, and some not even having been photographed alive before.

Specimens: A sample of large galls, and an example of how spiders lure their prey.

Next Meeting: 20th March - Holly Lister's presentation will be on Swift Parrots and Honeyeaters, both listed as endangered species.

Meeting Closed: 7:52 pm