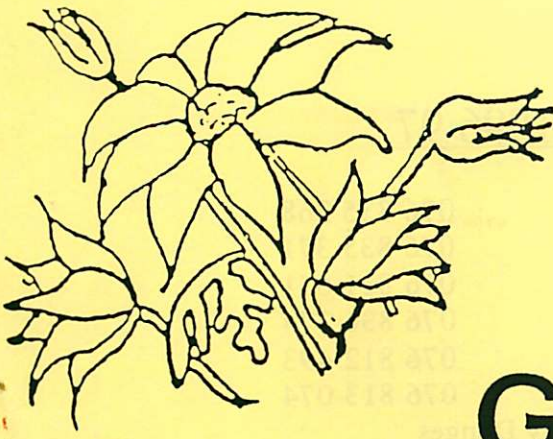


SEPTEMBER 1996

Vol 283



# THE GRANITE BELT NATURALIST



Monthly Newsletter of the  
Stanthorpe Field Naturalist Club

## AIMS OF THE CLUB

1. To study all branches of Natural History.
2. Preservation of the Flora and Fauna of Queensland.
3. Encouragement of a spirit of protection towards native birds, animals and plants.
4. To assist where possible in scientific research.
5. To publish a monthly newsletter and post it to members.

\*\*\*\*\*

Meetings: 4th Wednesday of each Month at QCWA Rooms at 8.00pm.  
Outings: The Sunday preceding the 4th Wednesday of each Month.  
Subscriptions: Single \$8.00 Family \$15.00 per annum July to June.  
Rent : Donation per family per meeting.  
Address: Stanthorpe Field Naturalist Club Inc., P.O. Box 154, Stanthorpe Q  
4380.



## CLUB OFFICE BEARERS 1996/97

President :	Kris Carnell	076 835 268
Vice-Presidents :	Rob McCosker	076 835 371
	Lincoln McPhee	076 811 651
Secretary :	Liz Bourne	076 836 374
Treasurer :	Roger Logan	076 812 493
Newsletter Editor :	Desley McDonagh	076 813 074
Magazine Committee :	Julie Beddow & Wendy Donges	
Publicity Officer :	Patience James	076 811 853
Librarian :	Trish McCosker	076 835 371
Management Committee :	President, Vice- Presidents, Secretary, Treasurer.	

## ADDRESS CORRECTION NOTICE

Please check your address. As you fill it in as you pay your sub for 1996/7 please make sure that it is correct for Australia Post delivery. IF YOU HAVE A MAIL SERVICE OR A POST OFFICE BOX NUMBER WE NEED IT!

## FOR YOUR ATTENTION PLEASE !!

1. NEXT MEETING will be held on September 25th at the CWA Rooms, Victoria Street, Stanthorpe at 8.00 pm. Paul Sattler will be speaking on the National Parks of Queensland.

2. SEPTEMBER OUTING - Sunday 22nd to Girraween National Park - leaving Weeroona Park at 9.00 am - lunch at The Junction. Further details inside.

\*\*\*\*\*PLEASE NOTE \*\*\*\* HALF DAY OUTING ON OCTOBER 6TH \*\*\*\*\*  
BEFORE THE NEXT NEWSLETTER WILL BE PUBLISHED. Leaving Weeroona Park at 1.00 pm meeting at Brian McDonagh's at 1.30 pm. We will be checking out the wild flowers on the Bluff. Map inside this Newsletter.

## SCALE OF DIFFICULTY FOR WALKS ON NATS OUTINGS

1. Flat walking, road or track.
2. Road or track, gentle hills.
3. Track, some hilly sections.
4. Track, some steep sections.
5. Cross country, easy open forest, gentle slopes.
6. Track, steep section common, with steps.
7. Cross country, some hills, some thick undergrowth.
8. Cross country, steep section with scrambles over rocks etc., some thick undergrowth.
9. Cross country, steep, hilly, rough, thick undergrowth.
10. Mountain climbing, hard going, higher level of fitness or plenty of time required.

## RAMBLINGS WITH YOUR EDITOR

Have you been for a ramble along the track to the 'red' bridge lately? It is well worth going if you have the time.

I went up there this morning (Saturday 7th) for the first time for quite a while (well, it hasn't been outside weather has it?) and found it a very enjoyable experience. Where the pools are still the reflections were/are magnificent. Further up, there is enough water to make the rapids look and sound interesting. There are quite a few wild flowers out, amongst them several wattle/ acacia, probably floribunda and fimbriata in very heavy bloom, hakea, probably microcarpa, which looks great and leucopogon also.

Speaking/writing of acacia, there are four flowering in my garden at the moment. Pubifolia was here when I bought, but unfortunately it's on its way out - past its use by date. I planted a nerifolia here several years ago and this year is the first it has flowered. It looks good and has already grown higher than the book says it will. The birds planted several floribunda and fimbriata in my yard several years ago. One of each are flowering, the fimbriata is very good but floribunda is still suffering, I believe, from last spring's late frost.

The birds have also planted privet and virginia creeper under the big trees but I remove all the privet that I find. (Found a bit of prickly pear the other day taking root also). One of the virginia creeper plants has survived and will make a good cover for the stump from the old arizona cypress which didn't survive the drought and borers. It's easy to understand how plants are carried away from their original areas.

The golden everlasting, Bracteantha bracteata, previously known as helichrysum bracteatum, which I propagated from seed some years ago, has almost taken over the yard. So many of the seeds have germinated that I will have to mow them off in the lawn as weeds. They'll make a good show this year.

Quite a few trees and shrubs that were here in July 1989 are no longer here. The two arizona cypress as well as two native cypress just didn't survive the drought. One native cypress lost its top (into my neighbour's yard) during strong winds so the rest had to go. The other had multiple trunks and, as a number of them were dead, we removed the two cypress trees at the same time. Thanks to friends, chainsaws, trucks and energy!. I also removed a mulberry tree and several other shrubs which were more trouble than they were worth.

More on birds - two bluefaced honeyeaters were here the other day. They make a most unusual noise and are certainly easily identified by it once you recognise it. From time to time the bluefaced honeyeaters pay me a visit. My list of bird species seen on this small town block now numbers 41.

MINUTES OF MEETING OF STANTHORPE FIELD NATURALIST CLUB INC;  
HELD IN Q.C.W.A. ROOMS STANTHORPE ON 28TH AUGUST 1996

PRESENT: 22 as per attendance book

Apologies: 11 as per attendance book

Welcome: President Kris welcomed everyone to the meeting, especially visitors Peter and Jeannette Andrewarthur and Ian Oag.

Minutes: of the previous meeting were accepted as a correct record on the motion of Patience James, seconded Rod Hutchin. Carried

Correspondence: There was no outwards correspondence. The following inwards correspondence was received on the motion of Margaret Carnell, seconded Lyle Thompson Carried.

1. Directory of Aust. Associations - Entry in Directory, 2. J. Kotroni - Subs, 3. P. Kerr -subs, 4. H. Gibson - subs, 5. C. & C. Adriaansen - subs, 6. K. Stica - subs. 7. Mahlab Information - Pre Bono listing, 8. fN. & J. Beddow - subs, 9. DPI Forestry - "Leaves", 10. Toowoomba Bushwalkers - "Footprint" 11. Dept. of Environment - Conservation & Management of Native Plants, 112. Vegetation Management - Management Plan for Shire, 13. Warwick Shire Council - Land Protection Plan Pest Management, 14. Cjhinchilla Field Nats - "Urimbirra" August '96, 15. Vegetation Management - Invitation to meeting, 16. Dept. of Tourism - Organization information.

Finance: The following financial statement was adopted on the motion of Mary Walters, seconded Errol Walker - carried.

Financial Statement for 24/7/96 to 28/8/96.

Balance as at 24/7/96 854.57

Receipts:

Subs	378.00	
Room Rent Collection	40.65	
Photocopying	2.50	
Donation for seats	5.00	426.15

Expenditure:

room Rent	12.50	
Magazine Postage	35.45	
Incorporation Fee	21.00	
Audit fees	150.00	
State Govt Tax	1.70	220.65

1060.07

Less error in last statement 5.00

Balance as at 28/8/96 1055.07

Accounts for payment: Magazine Postage for August \$36.55, Room Rent for August \$12.50.

Outing Report: Kris Carnell gave a report of the Outing to Red Rock Gorge. 33 people in 11 4WD vehicles set out over the rough road to the gorge, stopping to admire the view on the way. Things of note were the wildflowers along the way and mistletoe on Kurrajong trees. There were also a number of pardalotes to be seen. All members walked to the lookout and most explored further, going to the top of the falls and beyond. On the way out 7 vehicles went along the bottom road which was extremely rough but quite picturesque. The outing was very enjoyable.

Next Outing: The outing on 22nd September will be a walk to the Junction and beyond to a set of falls, led by Brian Dodd. Lunch will be carried.

Next Meeting: on 25th September will be addressed by a speaker from National parks.



**Specimens:** 1. Rod Hutchin - a number of orchids, both natives and exotics.  
 2. Patience James - photos of working bee at Heritage Park, 3. Karole Stica - photos of Glasshouse Mountains campout, and rock specimens.  
 4. Frank James - map of Groote Eylandt

**Program:** Frank James presented a very interesting program on Groote Eylandt from the days when he worked there in mining. We noticed his motor bike which was his means of transport, and gave an idea of the size of landforms and machinery.

Errol Walker then showed some slides of the Glass House Mountains and Lord Howe Island.

Kris moved a vote of thanks to Frank and Errol.

### FLOWERS SEEN ON RED ROCK OUTING

supplied by Jean Harslett

Hovea lanceolatus                      Dillwynia sp. (tall growing at Red Rock Gorge)  
 Daviesia sp (low growing extremely prickly)  
 Melichris ureceolatus (flowering very profusely)  
 Kurrajong Bracychiton populneum (ravaged by mistletoe)  
 Acacia viscidula - dark slender foliage, small pale yellow flowers on trap rock  
 Acacia nerifolia - mountain form at Gorge - silver stems broader phylodes than granite form  
 Pimelea curviflora ( previously pauciflora)  
 Pimelea humilis (Ballandean Station - open area                      Pimelia linifolia  
 Olearia viscosa                      Olearia gravis - tall slender with few largish flowers  
 Olearia canescens (grey foliage)  
 Pomaderris Queenslandicus (Red Rock Gorge - thought now it may be a distinct species.                      Cryptandra amara  
 Dodonaea attenuata (flowering very inconspicuous)  
 Dodonaea viscosa (a paper by Sheaff describes 6 forms and 12 varieties of species)  
 Viola betonicaefolia (wild violet)  
 Ranunculus lappacens (buttercup)                      Pterostylis mutica  
 Hibbertia sp (probably acicularis)                      Plectranthus sp  
 Brachycome tenuiscarpa var pubescens                      Pelargonium australe  
 Clematis microphylla                      Correa reflexa                      (Geranium)  
 On the road out Acacias graced the whole way including:  
 Acacia adunca (almost past its best)                      Acacia nerifolia  
 Acacia venulosa                      Acacia cultriformis                      Acacia floribunda  
 Acacia pruinosa (specially beautiful at peak of blooming)  
 Helichrysum sp (yellow button grey foliage)  
 Whalenbergia stricta

## RED ROCK OUTING 25.08.96

Leader : Kris Carnell

The outing to Red Rock Gorge was held in perfect August weather. We left Stanthorpe at 9 a.m. and travelled to Ballandean to collect more members. The wattle was flowering profusely along the highway with the best and most diverse display at Whiskey Gully. *Phebalium rotundifolium* was also noticed growing on the edge of the quarry. As we arrived at the entrance to the Sundown National Park there was a magnificent display of *Hovea* and *Clematis* beside the road. We had to have our obligatory morning cuppa before starting anything else. Contrary to our expectations, we had 4 WD seats to spare and 33 members in 11 vehicles took part in the day's activities. The journey into the gorge was along the "top" road - rough and slow is probably an understatement. The first stop was at a vantage point where we could look north-west to south-east, back over the site of the old Sundown homestead. We could see the Passchendaele T.V. tower, but the Dalveen Telecom tower eluded us. While stopped, we saw a wedgetail eagle and a striated pardalote - nearly the extremes in Australia's flying birds.

The next stop was to inspect a section of the old dog fence. This 12 or 13 wire fence was hand made in about 1886. The vertical ties were double hitched and the contractors were paid a farthing a tie.

We arrived at the gorge car park in time for an early lunch. The area has been improved considerably since some members had been there, with the provision of a toilet and a constructed path to the viewing platform. Peter Hazelgrove, the Sundown ranger joined us for lunch. After lunch we all set off to the platform. Soon the members were spread out along the edge of the gorge from the platform to the top of the falls and beyond. We spent a pleasant hour or so taking photos, identifying plants and birds and just plain looking. While reading the old minutes I noticed that in 1974 some members absailed at the gorge. Perhaps we're not quite as adventurous these days. Feral goats were heard in the gorge but not seen.

After afternoon it was time for the trip out. Peter had told us that if the "top" road was 5 out of 10 for roughness, then the "bottom" road was about 8.

Seven vehicles decided to tackle the "bottom" road. This proved to be very picturesque and different, but Peter wasn't wrong. Noticeable on both roads were the different soil types. We met up again at the old homestead site with comments such as "it was 11 out of 10", "I'm glad I did it but I'm not going to do it again" and "wouldn't miss it for quids."

On the way back to Ballandean some members may have noticed the view where you can see the Pyramids, Bald Rock, Castle Rock?, Mt Norman and Mallee Ridge.

All in all a very enjoyable day.

### BIRDS SEEN ON RED ROCK OUTING

Striated Pardalote	Spotted Pardalote (numerous)	Wedge Tailed Eagle
Crested Pidgeon	Eastern Spinebill	Wattle Bird
Yellow Tailed Black Cockatoo		Wonga Pidgeon(call)
Black Shouldered Kite	Eastern Rosella	Willy Wagtail
Pied Butcherbird	Pee Wee	Starling
Falcon		
Also Goanna, Red-Brown Wallaroo & wallabies.		

SEPTEMBER OUTING - SUNDAY 22ND - GIRRAWEE NATIONAL PARK  
Leader - Brian Dodd

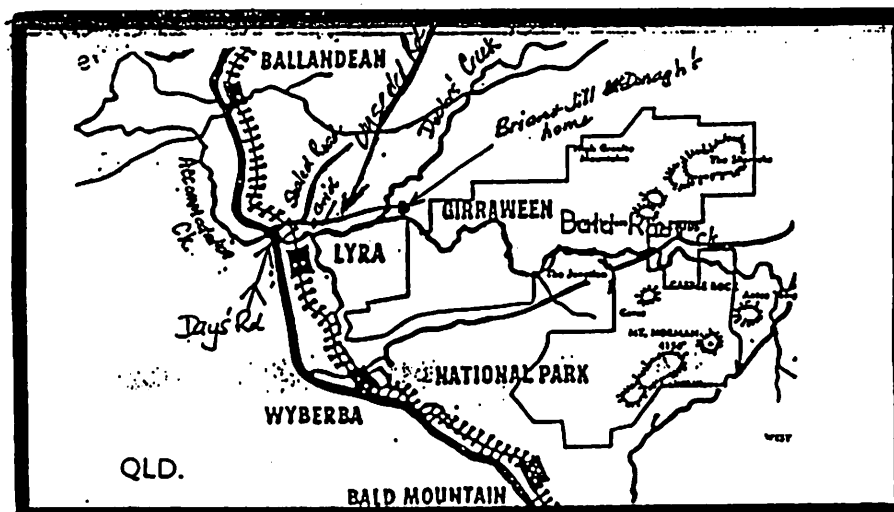
The September 22nd outing will be a pretty leisurely affair from Bald Rock Picnic Area at Girraween to the Junction of Ramsay Creek and Bald Rock Creeks. There will be some diversions including continuing one kilometre down the creek past the Junction to the falls. Lunch will be at the Junction. After lunch some may proceed back at their own pace to the Bald Rock Picnic Area, but for the more energetic there is a climb up a nearby hill where there is a slightly different wildflower flora in season including the largest *Eriostemon* species, *australasius*. Apart from the hill climb, scale of difficulty about 2, mainly on graded tracks with some minor bush bashing. Cars will leave Weeroona Park at 9.00 am and the walk will commence from Girraween at 10.00 am. Early flowering indicates an excellent wildflower season.

SEPTEMBER MEETING - 25TH AT CWA ROOMS AT 8.00PM  
'PROTECTING THE BIODIVERSITY OF QUEENSLAND.'

Guest speaker for the September meeting will be Paul Sattler, Acting Director of the Conservation Strategy Branch of the Department of Environment. During the last six years, Paul has overseen the rapid expansion of Queensland's National Parks system to ensure the representation and protection of the State's Biodiversity. He will be giving an illustrated talk on how the statewide strategy for nature conservation is being developed, highlighting some of the more significant new additions to the national park estate.

HALF DAY WILD FLOWER OUTING TO THE BLUFF AT LYRA OCTOBER 6

Leaving Weeroona Park at 1.00pm, meeting at Brian McDonagh's at 1.30 pm. Travel south on New England Highway - through Ballandean. South of Ballandean turn left into Day's Road just before Accommodation Creek bridge. After driving under the railway bridge veer right into unsealed road - then over a grid. Stay on this unsealed road (do not turn off it) till you come to Brian & Jill McDonagh's house - the end of the road. (You cross several more grids). We go past the house to the area of Girraween which shares a boundary with Brian's property. When we were there in May the wildflowers looked very promising - we had to push our way through boronia taller than some of us.



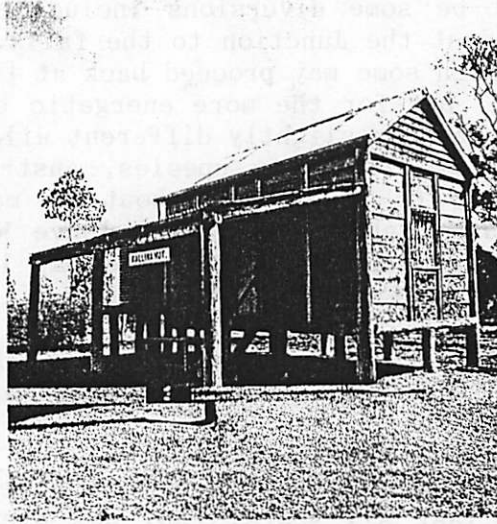
Further information of outings if needed - ring Desley McDonagh 813074.

# LET'S GO CAMPING

## GOODNIGHT SCRUB STATE FOREST

**T**his very scenic, mostly vine forest with its emergent hoop pine is south west of Bundaberg only 30 kilometres from the Bruce Highway. The native forest area will soon become National Park.

On the banks of the Burnett River on the southern end of the forest is a basic camping ground with no facilities and visitors should take all rubbish away with them. The grassy banks of the river offer a tranquil place to camp and perhaps swim, launch a canoe or catch a fish. A short two kilometre drive from the camping area is the historic Kalliwa slab hut built in the 1920s and once home to forestry workers. Here, there are facilities



for a picnic and barbecue, but no toilets. Camping is not

permitted at this site and once again take all rubbish with you. Although this scenic location is enough to guarantee every visitor a good night's sleep, the area actually gained its name because of its low dry hoop pine forest or 'scrub'. The 'scrub' is impossible to ride a horse through. Unfortunately for drovers, cattle could push their way in. So when cattle broke away into the 'scrub', the drovers would say you could "kiss your cattle goodnight".

From the old fire tower on One Tree hill you can enjoy a 360 degree view of the Forest. To visit Goodnight Scrub, take the turn off just north of Wallville on the Bruce Highway and follow the signs.

Contact the DPI Forest Service in Monto on (071) 66 1433.

## JAXUT CAMPING AREA - CATHU STATE FOREST

**M**idway between Mackay and Proserpine lies a low-key camping ground in Cathu State Forest. Campers here can enjoy the beauty of a wide variety of forest types including eucalypt forest, exotic and hoop pines and tropical rainforest which is dominated by Mackay Tulip Oak.

The peaceful atmosphere of the forest offers visitors the chance to relax by taking a kilometre walk along the rocky creek or enjoy a magnificent view at Clark Range Lookout. From the Lookout, situated 700 metres above sea level, visitors can see Repulse Bay at the mouth of the Proserpine River, some of the Whitsunday Islands and Cathu's pine forest. The hoop pine plantation and rainforest can be more closely observed on the nine kilometre circuit road. If you're looking for a place to have a picnic, stop at

Kangaroo Creek and take in the picturesque rock pools and large naturally grown hoop pine. To visit Cathu State Forest travel about 70 kilometres north of Mackay along the Bruce Highway and take the turn off. The Forest lies 11 kilometres away from the Highway. Contact the DPI Forest Service in Mackay on (079) 51 8724.



## WATER PARK CREEK PICNIC & CAMPING AREA - BYFIELD STATE FOREST



**W**hen searching for a secluded getaway, a camper can't go past Water Park Creek. Set in Byfield State Forest, north of Yeppoon, this camping area offers some small secluded bush nodes as well as sites suitable for large groups, families and caravans. Barbecues, running water and toilets are provided at the site.

The paperbark and palm trees which line Water Park Creek make it an inviting spot to cool down on a hot day. Visitors can also enjoy exploring this creek by canoe. Those wanting to view Byfield's open forest and adjacent rainforest can follow the established walking tracks. A recently opened boardwalk allows all visitors, including those who are elderly or not able to handle more strenuous walking conditions, to enjoy the fringing rainforest along Water Park Creek. The track ends at a waterhole in the creek and provides a quiet place to sit and reflect. Water Park Creek is about four kilometres from the Byfield Forest office and only about an hour and a half from Rockhampton. Take Byfield Road out of Yeppoon and follow the signs. Contact the DPI Forest Service Rockhampton on (079) 31 9700. ■

*This information is from 'Between the Leaves' published by the DPI. I will be printing details of camping areas published there from time to time with the hope that it will be of interest to members of the Nats. who may be travelling in some of the areas described.*