



THE GRANITE BELT NATURALIST



**Monthly Newsletter of the
Stanthorpe Field Naturalist Club**

Registered Publication No. QBH 1824
Category B
If not claimed please return to
P.O. Box 154, Stanthorpe, Q. 4380

**SURFACE
MAIL**

**POSTAGE
PAID
AUSTRALIA**

OFFICERS OF CLUB FOR 1990 - 91

PRESIDENT	Kris Carnell	835268
VICE-PRESIDENTS	Ray Marsden	811593
	Jean Harslett B.E.M.	833185
SECRETARY	Desley McDonagh	813074
Treasurer	Julia Brown	
Newsletter Editor	Margaret Carnell	835268
Newsletter Sub-Committee	Val White & Dore McCosker	
Publicity Officer	Tom Archer	811754
Flora & Fauna Officer	Brian McDonagh	841284
Geology Officer	Colin Hockings	811978
Youth Officer	Robin McCosker	835371
Bushwalking Officer	Errol Walker	812008
Librarian	Esme Colley	812927
Committee	Nominated Officials with Power to co opt	

Meetings: 4th Wednesday of each Month at Q.C.W.A. Rooms at 8pm.

Outings: The Sunday PRECEDING the 4th Wednesday of each Month.

Annual Subscriptions: Single \$8.00 Family \$15.00 per annum

Rent: Donation per family per meeting.

AIMS OF THE CLUB

1. To study all branches of Natural History.
2. Preservation of the Flora and Fauna of Queensland.
3. Encouragement of a spirit of protection towards native birds, animals and plants.
4. To assist where possible in scientific research.
5. To publish a monthly newsletter and post to members.

ADDRESS CHECK

Could all members please check that their address is correct, and if not notify the secretary immediately.

COPY FOR NEWSLETTER

Could all contributors to the newsletter please have their copy, in the hands of the editor by the second Sunday of the month if at all possible. Copy may be sent to P.O.Box 33, Severnlea 4352 or left with Sylvia Murphy at Chelsea House & Garden at the Stanthorpe Plaza.

MINUTES OF THE MEETING OF THE STANTHORPE FIELD NATURALIST CLUB INC. HELD IN
THE C.W.A. ROOMS STANTHORPE 24/4/91.

OPENING: The President, Kris Carnell welcomed all present, with a special welcome to Ralph Fletcher who was attending his first meeting after being on several outings.

ATTENDANCE & APOLOGIES: as per attendance book.

CORRESPONDENCE:

- Inward: 1. Bank Statement
2. Footprint - Toowoomba Bushwalkers Club magazine.
3. Queensland Nats Inc. - Queensland Natural History Award.
4. A.C.F. Raffle
5. Queensland University - Eco Tourism
6. Conservation News.
7. Q.C.W.A. Invitation to luncheon on 29/4/91.

- Outward: 1. Chinchilla Nats re September outing.
2. Rob Stevens - Appreciation for help at Killarney outing.
3. 4QS Round the Ridges.

Margaret Carnell moved and Errol Walker seconded the motion that the inward correspondence be received and the outward adopted. Carried.

BUSINESS FROM CORRESPONDENCE: The letter from Qld. Nats Club be given more thought and perhaps a decision at our next meeting.

TREASURER'S REPORT:

Statement for 27/3/91 to 24/4/91.

Bank Balance as at 27/3/91 309.74

Receipts:

Subscriptions	37.00	
Room Rent Collection	14.50	
Change Postage	24	51.74
		<hr/> 361.48

Expenditure:

Room Rent	10.00	
Magazine Duplicating	6.00	
Magazine Postage	25.00	
P.O. Box Rental	35.00	
Fed Gvt Tax March	30	76.30
Bank Balance as at 24/4/91		<hr/> \$285.18

Accounts passed for payment: Room rent \$10.00; Magazine Duplication \$6.00; Magazine Postage; \$5.00; Book for Eric Reis \$17.00.

Julia Brown moved that the Treasurer's Report be adopted, and the accounts be passed for payment. Seconded Colin Hockings. Carried.

OUTING REPORT: Given by Leader Leila Hermansson. Weather perfect, 38 present in 14 cars. To "Rocklea" Wylie Creek, property of Mrs Lorraine Kelly. Walked down creek to next property, then up the creek to a pleasant spot for lunch. Then returned along boundary fence to cars. Relaxed day, cattle interested in us. 2 black snakes, trees and plants enjoyed.

Gordon Davis remarked how many noxious plants brought down by the creek and growing on banks.

Frank Wilkinson said he watched one black snake for a while - making a leisurely retreat - tried three little holes before it finally found one deep enough to accommodate all of it.

Outing Report (contd.)

In the afternoon some of the party climbed to a balancing rock pointed out by May Prentice off the Wylie Creek road, an excellent example on property of Dick Bonner.

GENERAL BUSINESS:

1. Kris Carnell has purchased a new visitor's book to be sent to Eric Reis, the bullock team expert, in thanks for display. \$17.00 to be reimbursed to Kris.
2. Doug Rigden had a name tag to display as possible one for members - Doug to take further enquiries re cost etc.
3. Jean Harslett said that she had had a sign from Kel Dominey - who had been to some of the more remote parts of Carnarvon Gorge and Mt Moffat National Parks, and had a programme he would like to show Nats if programme desired.
4. Patience James said that they had a few slides taken at Mt Norman when they were visiting there and a person fell and broke a leg - not in their party. S.E.S. was called in to rescue - shows how it's done. Suggested that these be shown in combination with First Aid programme June 26th.
- 5/ Noor Davis and Mary Clarke are running a stall for Kurdish Relief in front of Mahoney's Friday 10th May. Items for sale or support in buying appreciated. Items to Noor, Stall or Mary Clarke. Tel Davis 836294

NEXT OUTING 19th May

Robin McCosker (leader) Aztec Temple and Underground River - 9 am
Weeroona Park, or Dr Robert's Waterhole parking area 10am - carry lunch.
SEE PRE-OUTING REPORT - Ed.

NEXT PROGRAMME: David Hockings, North Queensland, Cape York etc.

TONIGHT'S PROGRAMME: Mrs Dawn Sullivan - trekking in Nepal - talked mostly - had albums of prints, map etc. She and her sister have walked and travelled together for many years (28 years ago), so had reservations about their ages to tackle such a venture. Trained for 6 months, walking up to 10km. Wonderful to travel as sisters again. Travelled with Wilderness Experience, only 8 in a party. Sisters agreed that if either had to turn back the other would go on. Rae did full trip - Dawn had to return because of altitude sickness. However she had special experiences with a guide - on a one to one ratio - and actually stayed with 'locals' instead of camping. (Special experience). Wildflowers were beautiful, especially rhododendrons. While in mountains in isolation - no news - civil war broke out in Katmandu - spent three days of anxiety, especially for family at home, with no way of getting out of country. Curfew put on hotel - no news. But they got home safely and it was a great relief. Though Dawn did not get to the top, she had an incredible 'people' experience which the others did not receive.

LETTERS OF THANKS: Moved Lyle Thompson, seconded Millie Marsden that letters of thanks go to Lorraine Kelly, Dick Bonner and Dawn Sullivan. Carried.

SPECIMENS: Dore McCosker brought along a specimen of one of the vines seen on the outing. She has some of it planted in her garden from another outing and they have a fine collection of shiny black berries on it. The plant is a CAYRATIA and belongs to the BITTIDACCAE family which figures. The other creeper with the heart shaped green leaves (amongst the rocks adjacent to the river) was the TAPE VINE - STEPHANIA JAPONICA). Some of the members may recall photographing the bright orange berries on a Rivertree outing.

The meeting then closed.

MINUTES OF THE MANAGEMENT COMMITTEE MEETING OF THE STANTHORPE FIELD NATURALIST CLUB INC. HELD ON 27/3/91 AT THE C.W.A. ROOMS STANTHORPE.

PRESENT: Kris Carnell, Val White, Margaret Carnell, Esme Colley, Tom Archer, Colin Hockings, Rob McCosker, Dore McCosker, Desley McDonagh.

APOLOGIES: Jean Harslett, Ray Marsden, Errol Walker, Brian McDonagh & Julia Brown.

MINUTES: of the Management Committee meeting held 23/1/91 were adopted on the motion of Colin Hockings, seconded by Margaret Carnell and carried.

The TREASURER'S REPORT was adopted on the motion of Desley McDonagh seconded by Val White and carried.

Details of the Treasurer's report are in the minutes of the March monthly meeting.

There being no other business for the Management committee meeting, the meeting was closed and the general meeting reopened.

OUR HERITAGE OF WORTH

They laughed at poor old Noah,
They jeered at his ark,
But every bird, beast and flower
That with them did embark
Returned in Holy glory
And with offspring did give birth;
So no longer is she lonely
This wonderful Mother Earth.
Come! share with us the interest
Our heritage of worth;
The security to invest
In natural rebirth.
Walk with us. The bushland
Gives of bounteous reward,
From fauna of the woodland
The voice of Earth is heard,
When creatures of the darkness
Venture out to scurry free
And join with us the closeness
In the firelight we can see
Where the dew wet chill of morning
A Jackass laughs to greet the day
Ere a bright new sun is shining;
Waterfalls rushing on their way
Sleepy lizards are basking
Just beyond the reach of spray.
So fill your lungs with Elixir from the trees
Forsake the cities fetid breath
And inhale the bushland breeze,
Add another day of life
Not deducted from the rest.
Shed all mundane stress and strife
Put Mother Nature to the test.
Come! step into our stride
Enjoy the beauty of our day
Field Nats Worldwide
Share life along their way.

Fred Simpson

OUTING REPORT - "ROCKLEA"WYLIE CREEK - 21ST APRIL

We arrived at "Rocklea", Lorraine Kelly's property near Wylie Creek in good time for our morning cuppa, and were made welcome by her.

The weather was perfect, and 38 people arrived in 14 cars. We made our way down to Wylie Creek in front of the house, followed it down to the next property, then retraced our steps and proceeded back up the creek, arriving at a pleasant spot for lunch.

We followed the boundary of the next property up and over a hill, thence back to the cars.

It was a pleasant, relaxed day which I think was enjoyed by all.

Considerable interest was shown in the trees lining the banks of the creek (and the cattle nearby were interested in us). Some birds were noted - also a couple of black snakes and a large spider.

May Prentice had drawn Jean Harslett's attention on their way in, to a balancing rock over on a hill the other side of the Mt Lindsay Rd., on a property belonging to my cousin, Dick Bonner, whom I rang and got his permission to have a close look at it on our way home. It was well worth the effort, and an excellent way to round off the day's outing.

Leila Hermansson

PLANTS AT WYLIE CREEK

Plants seen along the creek on Sunday 21st April are usually found along water courses and near rain forests in this district. River Oaks (*Casuarina*), *Angophora*; rivergums, peppermints provided a shady canopy over *Leptospermum* (one species with attractive smooth brown bark) and acacias (mainly *floribunda*). On a lower level *Polygonum hydropiper* (commonly known as water pepper or smart weed); ant bush, *Plectranthus* and various introduced weeds and garden escapees washed down in floods most noticeably the common ornamental chilli. After sampling, Frank suffered mouth discomfort for some time. White violets (blotched with mauve) were in bloom. These *Viola hederacea* love the attention given to garden plants and will quickly smother everything. They are obtainable from nurseries. There was water cress to nibble. Creepers included wild passionfruit; *Stephania japonica* - with distinctive peltate leaves (the stalk is attached near the centre instead of the margin of the leaf), and clusters of berries that turn through yellow to deep red as they ripen; *hardenbergia*; raspberries and *Cayratia clematidea* - an attractive vigorous climber which produces clusters of edible shiny black berries and forms tubers underground which are edible after cooking. Both *Stephania* and *Cayratia* can be used as indoor plants.

Away from the creek a Briar rose displayed its colourful hips. Briars don't seem to be as common as they were years ago. Nearby a tenacious Kurrajong showed how it has succeeded in wrestling with rocks - proving an irresistible subject for cameras. The foliage of Kurrajong and *Angophora* is often used by graziers as drought fodder. We saw much evidence of this on a previous outing at Severn Hills.

Two distinct species of *Angophora* were noted. *A. floribunda* with its long spreading branches that twist and turn in incredible shapes and *A. subvelutina* of conventional growth.

Many years ago a sawmiller from Wallangarra obtained an Apple log (Angophora) from our property to cut boards for the sides and tail gate of a flat top utility truck. The timber does not splinter readily or split and warp and is light. As firewood it throws out little heat but will smoulder to a fine white ash - often used by the pioneers as a dentifrice. (Powder or paste or wash for tooth cleaning. - Ed)

On top of the hill a netball size clump of Dendrobium canaliculatum lay on a rock where the hollow branch it grew in had fallen and shattered exposing the mass of "roots". The leaves are green but stunted. It will probably bloom bravely in the spring. Mrs Kelly may even add it to the interesting collection of orchids, stag or elkhorns and crows nest ferns in her garden.

D. Mc Cosker

A few years ago my father was asked to make stops for shot-put our of Angophora for the same reasons it was used for the utility. Ed.

OUTING FOR 19th MAY, 1991

The outing on 19th May will be to the Underground River and Aztec Temple, and will be led by Rob McCosker.

We will meet at 9am at Weeroona Park and proceed along Eukey Road to the Giraween Road. We will reassemble at the Track to Racecourse Creek, which is 5km east of Giraween Park headquarters. We will leave the cars on the road about 1km from the turnoff, and carry lunch to Underground River. After lunch we will go on to the Aztec Temple, stopping on the way to climb the Signboard, (those with the energy to spare). We will return via the service road which should be an easy walk. The most difficult part of the walk is rated at 6 out of 10.

SOCIETY FOR GROWING AUSTRALIAN PLANTS

The society publishes quarterly the journal "Australian Plants" and hopes in the next decade to publish a revision of the entire flora. In the latest number of "Australian Plants" the editor asked for help getting colour slides of native plants. He has difficulty getting good pictures and is offering to pay photographers the cost of their film and processing if they send him the slides and note of the costs.

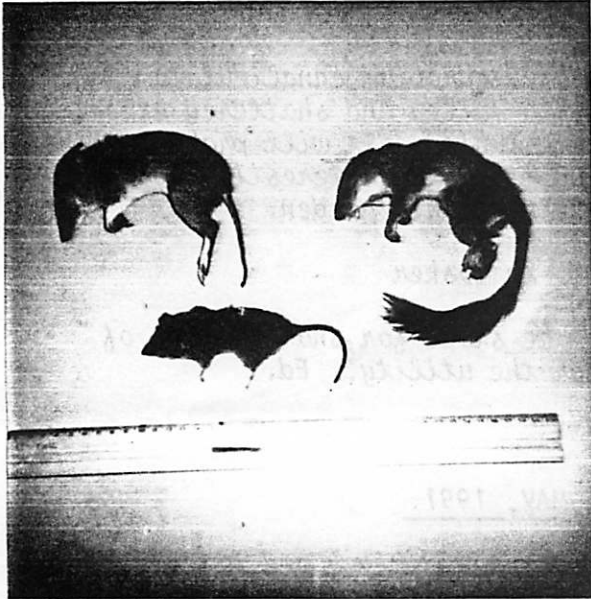
Gordon Davis
Phone 836 294

NEW STAMPS PUT INSECTS ON THE MAP

Australia Post has just issued a new stamp series featuring native Australian insects.

There will be two 43 cent stamps. One will feature the brightly coloured cotton harlequin bug (Tectocoris diophthalmus). It is one of a group of bugs of varying hues found in northern and eastern Australia. It is often associated with hibiscus flowers. The other 43 cent stamp is illustrated with a hawk moth (Cizara ardenia), which is found in eastern Australia. Although some hawkmoths are considered to be pests, most are harmless.

Australian Horticulture, April 1991
used with permission



SPECIMENS FROM DORE'S FREEZER

These three specimens were sent to the Museum after spending some time in Dore McCosker's freezer.

Top left: Long-nosed Bandicoot. This caused a lot of interest at the museum as it was found out of its usual territory by Irma Rickard at Undercliffe.

Top right: Brush-tailed Phascogale. This was also supplied by Irma Rickard.

Bottom: Yellow-footed Antechinus which was caught in a mouse trap in Jan Newman's pantry. Jan threw out the first specimen thinking it was a mouse, and the dog devoured it. When she caught the second one she realized it was not a mouse and passed it on to Dore for identification.

The following information comes from the "Complete Book of Australian Mammals" edited by Ron Straham.

LONG-NOSED BANDICOOT *Perameles nasuta*. Drab greyish-brown above, creamy white below. Forefeet and upper surface of hindfeet creamy white. Distinguished from other *Perameles* by absence of distinct dark and light bars on rump, except in some juveniles and fewer adults which show a faint barred pattern. Muzzle long and pointed and ears distinctly longer and more pointed than in short-nosed bandicoots of the genus *Isodon*.

The long-nosed bandicoot spends the day in a nest and forages at night for insects and other foodstuffs. It is a solitary animal, contact between males and females being restricted to several nights prior to mating. Breeding occurs throughout the year, and the litter size is 1 - 5.

BRUSH-tailed PHASCOGALE (*Phascogale tapoatafa*). Uniform deep grizzled grey on head, back and flanks, pale cream underneath. Large naked ears. Conspicuous, intensely black 'bottle-brush' tail with hairs up to 40mm long. The Brush-tailed Phascogale is largely aboreal, living for preference in open dry sclerophyll forest with little ground cover, on ridges up to 600m altitude. The diet consists largely of arthropods. Mating occurs in winter, and more than 8 young are born. They remain attached to the nipples for about 40 days. After mating the male dies.

YELLOW-FOOTED ANTECHINUS (*Antechinus flavipes*). It is found from northeastern Queensland to southwestern Western Australia. Its diet consists mostly of insects but may include almost anything from flowers and nectar to small birds and house mice. As it devours vertebrate prey, its victims such as mice or birds are neatly turned inside out and the everted skin is left. It is distinguished from other antechinuses by the definite change in fur colour from its slate-grey head to its warm, orange-brown sides, belly, rump and feet. It also has white to light grey eye-rings and a prominent black tip to the tail.
