



# The Granite Belt Naturalist



**Mail Address:** Stanthorpe Field Naturalist Club Inc, PO Box 154, Stanthorpe Qld. 4380  
[stanthorpefieldnats@gmail.com](mailto:stanthorpefieldnats@gmail.com)

Web site <https://mysd.com.au/fieldnats/>

Please send contributions to the magazine to [editorsfnc@gmail.com](mailto:editorsfnc@gmail.com)

## **AIMS OF THE CLUB**

1. To study all branches of Natural History
2. Preservation of the Flora and Fauna of Queensland
3. Encouragement of a spirit of protection towards native birds, animals and plants
4. To assist where possible in scientific research
5. To publish a monthly newsletter



*The Pyramids, Girraween National Park*

**Meetings:** 4th Wednesday of each month at  
Uniting Church, Small Hall, 113 High Street  
Stanthorpe at 7.30pm

**Outings:** The Sunday following the 4<sup>th</sup> Wednesday  
of each month

**Subs:** Single \$20.00, Family \$30.00 per annum, July  
to June

## **CLUB OFFICE BEARERS – 2023/2024**

President	Leon McCosker	46811737
Vice-presidents	Holly Patti	
	Robyn Murray	0488515311
Secretary	John Salini	0400805236
Treasurer	Lynette Haselgrove	0409006063
Newsletter Editor	Margaret Carnell	0427835268
Publicity Officer	Theresa Clifford	0413008602
Librarian	Rob McCosker	46835371

Stanthorpe Field Naturalists is a group member of  
Granite Borders Landcare.



Management Committee: President, Vice-  
Presidents, Secretary, Treasurer

**SCALE OF DIFFICULTY FOR WALKS**  
**ON NATS OUTINGS**

1. Flat, well-formed track, no steps, 5km or less. Clearly signposted. Suitable for wheelchairs with assistance.
2. Formed track. May have gentle hills and some steps. Clearly signposted. No experience required
3. Formed track, some obstacles, 20km or less. May have short steep hills and many steps. Some experience recommended.
4. Rough Track. May be long and very steep with few directional signs. For experienced bushwalkers.
5. Unformed track. Likely to be very rough, very steep and unmarked. For very experienced bushwalkers with specialised skills.

**Coming Up**

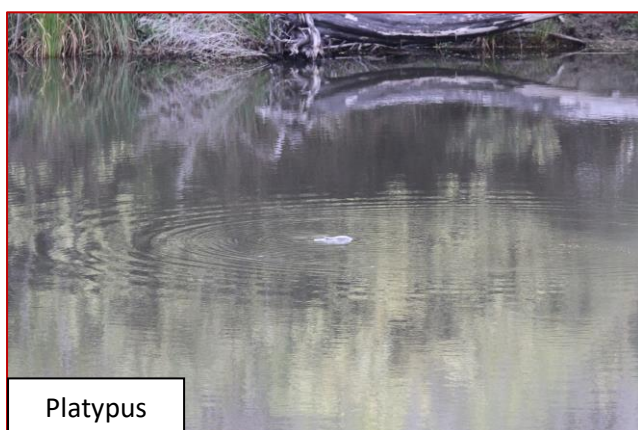
Wednesday 27<sup>th</sup> September: *Platypus* with Holly Patti

Sunday 1<sup>st</sup> October: *Platypus Survey* with Holly Patti

**Deadline for next newsletter**  
**13<sup>th</sup> October 2023**

**Platypus Survey Pre-Outing Report 1<sup>st</sup> October 2023 (Scale of difficulty 2-3)**

**Leader:** Holly Patti 0421 288 216.



Platypus

Meet at Weeroona Park at 9am, and carpool if required.

Directions: Drive east on Amosfield Road and turn right at the end onto Mt Lindsay Highway. Continue south to the Boonoo Boonoo National Park turnoff on the left, approx. 42 Kms from Stanthorpe. Approx 7 kms into the park, park cars at the Cypress Pine Campground (there is parking directly at the Platypus Waterhole, (limited) although to avoid disturbance to any possible platypus, park at the campground.

There were few other people in the park, and it was a beautiful morning, I took my chair and morning tea and sat at the main waterhole. No sighting of any platypus today but a wonderful place to sit, very relaxing. There was lots of frog song, and plenty of birds. I watched both a White Throated Treecreeper and a Yellow Faced Honeyeater busy finding nesting material around where I sat. A creature wandered past close nearby and I was unable to work out what it was (It was all brown and looked like a guinea pig with a tail??) Maybe a Bush Rat.

I wandered down the creek on the trail and there were lots of lovely flowers out including large wax lip orchids, pink kunzea and boronia. These flowers were only just starting so hopefully they will be in full bloom for the outing in three weeks. Lots of different species of wattle were out too. I did a bit of a loop and then walked the track upstream.



Boronia sp.

There are lots of waterholes along the creek so hopefully more chances of spotting the elusive Mr Platypus.

I came back to the large waterhole for lunch to watch again but a storm came in and I was unable to see much with the rain splashing on the surface of the water. There is a decent amount of space alongside the waterhole for everyone to bring a chair. We can have morning tea there and then return again for lunch. The car park (and toilet) is about 80 ms away so you won't have to carry everything on the walks. The walk downstream after morning tea, and the walk upstream after lunch will be on a gently undulating track, well formed with some easy granite slabs. Make sure you bring your camera and binos!

**Fauna:**

Echidna, Eastern Dwarf Tree Frog *Litoria fallax*,

**Birds:** Yellow Faced Honey Eater, White Throated Tree Creeper, Eastern Spinebill, Variegated Fairy Wren, Fan Tailed Cuckoo, Currawong, Grey Fantail, Thornbill sp., Kookaburra, Flycatcher sp., Crimson Rosella, Satin Bowerbird, Raven, White Browed Scrubwren, Welcome Swallow, New Holland Honeyeater, Superb Fairy Wren, Lyrebird (heard), Olive backed Oriole (heard)

**Flora:**

*Ozothamnus diosmifolius* Rice Flower, *Glossodia major* Large Wax Lip Orchid, *Hardenbergia violacea* Native Sarsaparilla, *Mirbelia speciosa* Showy Mirbelia, *Hovea graniticola* Granite Hovea, *Patersonia glabrata* Wild Iris, *Banksia spinulosa* New England Banksia, *Boronia microphylla* Small Leaved Boronia, *Pimelea linifolia* Queen of the Bush, *Kunzea obovata* Pink Kunzea, *Wurnbea biglandulosa* Early Nancy, *Epacris microphylla* Coral Heath, *Viola betonicifolia* Mountain Violet, *Leucopogon lanceolatus* Lance Beard Heath, *Brachyscome* sp., *Pomaderris lanigera* Wolly Pomaderris, *Hibbertia acicularis* Prickly Guinea flower. *Acacia ulicifolia* Prickly Moses (cream form) *A. brownei* Prickly Moses (yellow form), *A. venulosa* Veiny Wattle, *A. viscidula* Sticky Wattle, *A. falciformis* Mountain Hickory, *A. floribunda* White Sally Wattle



Yellow-faced Honeyeater

**Outing Report Mt Marlay and Sentimental Rocks 27<sup>th</sup> August 2023**

As Lesley, who led the outing is away doing exciting things, I will do my best to write a report. Kris and I were late so we missed out on the Mt Marlay section of the outing



Stag Horn at Sentimental

where the walk was to Alice Street and back. There was a golden whistler in the trees near the carpark and we saw a grey fantail close to the track when we went for a stroll. The *Acacia fimbriata* was blooming well and *Hardenbergia violacea* was making a good show too.



After a late morning tea/early lunch we drove to Sentimental Rocks and had a very interesting walk there. I had forgotten how extensive the



area of rocks is, so it was a pleasant surprise to find how much there was to explore. One of the first flowers we saw was *Indigofera australis*, and there were quite a number of bushes in full bloom. There was also *Correa reflexa* and a *Glycine*. On one rock there was a staghorn (or elkhorn), as well as ferns, and there was tongue orchid growing on several rocks. We saw fig trees and unfortunately, a lot of privet.

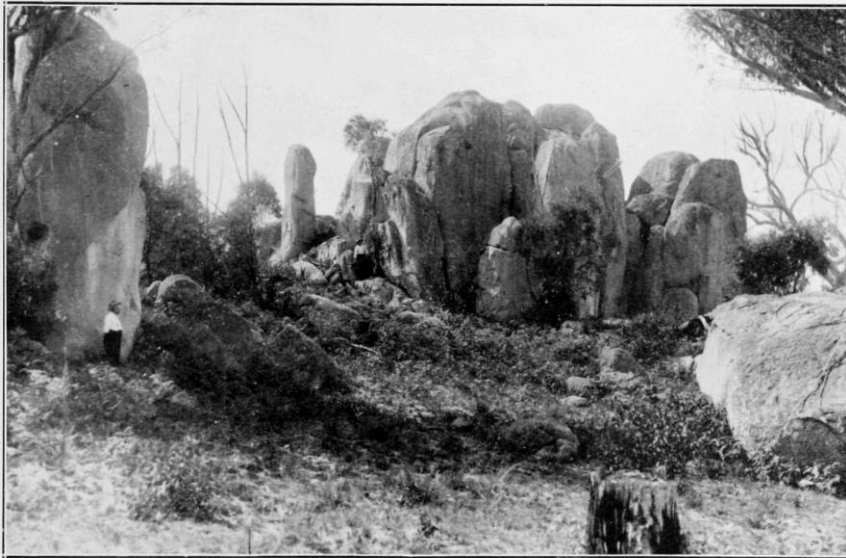
As we made our way back to the cars we stopped to admire several *Grevilleas* growing in someone's garden. All in all it was a most enjoyable day.

Margaret Carnell

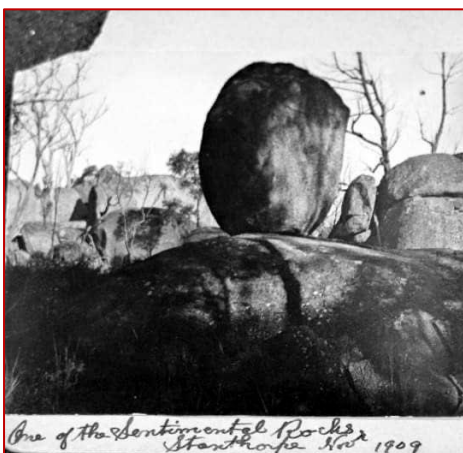


Indigofera australis

Many thanks to Holly Patti for these photos of Sentimental Rocks.



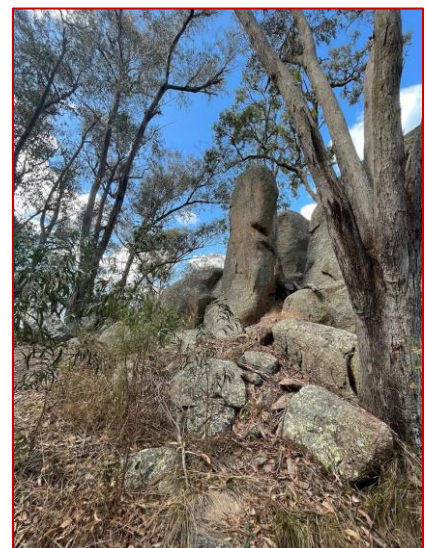
**SENTIMENTAL ROCKS**  
Very nice views can be seen from the top of this remarkable group of huge rocks. A comfortable ten minute's walk from the Post Office.



One of the Sentimental Rocks  
Stanthorpe Nov 1909



At the Sentimental Rocks  
Stanthorpe Nov 1909





### More Wattles



Towards the end of August, Kris and I went for a walk at the slab on the corner of Pyramids Road and Mt Norman Road hoping to identify an *Acacia* we saw on the Nats outing in July. Well before we arrived we saw several wattles different from the ones in the last magazine. Firstly there was *Acacia buxifolia* (box-leaf wattle) growing close to *Olearia microphylla* (star bush), then further along there were beautiful specimens of *Acacia filicifolia*. We saw a large tree of this on Granite Belt Drive but were able to get close-up photos this time. The *Acacia venulosa* was still blooming well and when we walked up the rock we saw *Acacia granitica* and *Acacia latisepera*. When we reached

the area where the wattle we wished to identify was growing, it had started to come into bloom. We were able to identify it as *Acacia viscidula* (sticky wattle). *Acacia adunca* Wallangarra wattle was still in bloom, although some of the flowers were starting to turn brown.

On leaving the rock slab we headed towards the highway past the park headquarters and had to stop because we saw *Acacia bruinoides*, *Acacia pruinose* and *Acacia ulicifolia*. We drove along the Old Wallangarra Road and came to the highway at Bald Mountain so we could drive past Devil's Elbow to look for *Acacia pubifolia* (Wyberba wattle) and were pleased to find it in bloom.  
Margaret Carnell



**Top L:** *Acacia buxifolia* (box-leaf wattle)

**Middle L:** *Acacia bruinoides* (brown wattle)

**Bottom L:** *Acacia granitica* (granite wattle)

**Bottom R:** *Acacia filicifolia* (fern-leafed wattle)





**Top L & R:** *Acacia viscidula* (sticky wattle)  
**Middle L:** *Acacia latisepala*  
**Middle R:** *Acacia pruinosa* (frosty wattle)  
**Bottom L:** *Acacia pubifolia* (Wyberba wattle)  
**Bottom R:** *Acacia ulicifolia* (prickly Moses)



**Minutes of the Ordinary General Meeting, 23<sup>rd</sup> August 2023**  
**Stanthorpe Field Naturalist Club Inc**

**Meeting opened:** 7:35pm

**Attendance & Apologies:** As per Attendance Book, 17 including several visitors

**Minutes of the previous meeting: - Any amendments? None.....**

Confirmed...John

Seconded...Kris

Carried

**Business arising from the minutes: None**

**Correspondence:** read as per correspondence book; John reported the printed Qld Field Nats newsletter; Margaret Carnell offered to contact them about sending digital newsletters via email, as in the past.

Moved...John

Seconded...Kris

Carried

**Financial Report:** Treasurer's Report Current Balance: \$??

Petty Cash \$102.25

**Total**

**\$2,547.14**

Moved ...Lyn

Seconded...Margaret

Carried

**General Business Arising:**

1. Newsletter editor – email address [editorsfnc@gmail.com](mailto:editorsfnc@gmail.com)
  - a. Margaret suggested Qld Field Nats be asked to send digital newsletters
2. Duncan Cameron – continue to receive newsletters? – Yes will continue to send NLs
3. Facebook account – Holly has 'liked' SFN FB page to other groups
4. The Carnells returned to the Slab site in Girraween to check wattle blossoms; recorded 9 different species and will send a report for the September NL

**Outing Report:** Rob - outing to stone house; in his absence, Peter Haselgrove gave a summary of the visit.

Kris Carnell mentioned the plant drives underway by the Stanthorpe Agricultural Society and the Dalveen State School P&C.

**Pre-Outing Report:**

Lesley – Mt Marley and Sentimental Rocks.

**Speaker & Topic:**

Holly – Frog Motels; Holly played many frog calls during her interesting talk; she showed how to build 'Frog Motels' and showed several set up in her home yard.

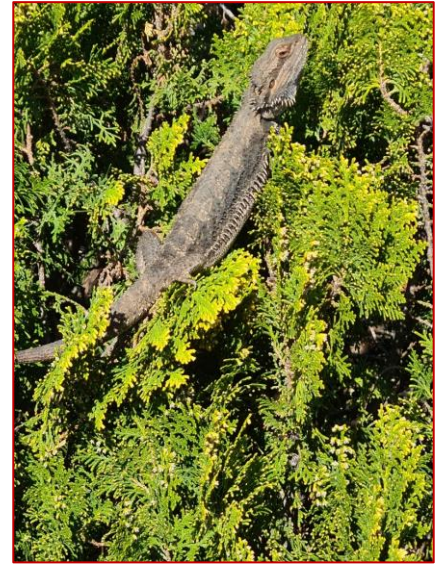
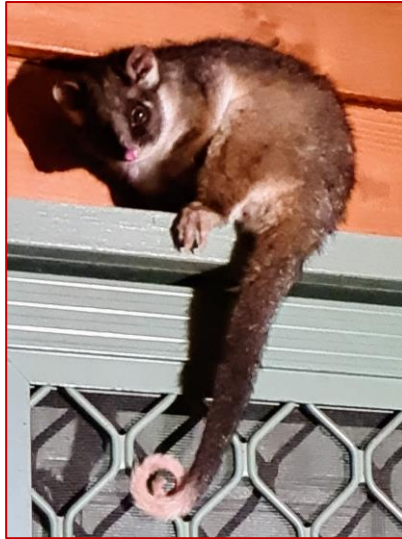
**Presentation:**

**Specimens:** - Leon brought in 3 wattle blossoms. *A. floribunda*, *A. adunca* and possibly *A. rubida* (the red stemmed wattle)?

**Next Meeting:** Wednesday 27<sup>th</sup> September – Holly, Platypus. Outing Sunday 1<sup>st</sup> October – Platypus.

**Meeting Closed:** 8:15 pm

# Spottings



Many thanks to Lyn and Graham for these photos taken on their recent trip.

**Above L:** Kurrajong seedpod Penola S.A

**Above M:** Ringtail Possum at Torquay

**Above R:** Bearded Dragon at Nancy Bird Airport, Bourke

**Below L:** *Acacia glaucoptera* at Mildura (or Renmark). Endemic to Western Australia

**Below R:** Eucalypts at Melrose S.A. Lyn and Graham were looking at a plaque about the Goyder Line when they noticed the size of these trees.

