



# The Granite Belt Naturalist



**Mail Address:** Stanthorpe Field Naturalist Club Inc, PO Box 154, Stanthorpe Qld. 4380  
**stanthorpefieldnats@gmail.com**

Web site <https://mysd.com.au/fieldnats/>

## **AIMS OF THE CLUB**

1. To study all branches of Natural History
2. Preservation of the Flora and Fauna of Queensland
3. Encouragement of a spirit of protection towards native birds, animals and plants
4. To assist where possible in scientific research
5. To publish a monthly newsletter



*The Pyramids, Girraween National Park*

**Meetings:** 4th Wednesday of each month at  
Uniting Church, Small Hall, 113 High Street  
Stanthorpe at 7.30pm

**Outings:** The Sunday following the 4<sup>th</sup> Wednesday  
of each month

**Subs:** Single \$20.00, Family \$30.00 per annum, July  
to June

## **CLUB OFFICE BEARERS – 2022/2023**

President	Leon McCosker	46811737
Vice-presidents	Peter Haselgrove	46837255
	Robyn Murray	0488515311
Secretary/	Leslie Saunders	46813837
Treasurer	mobile	0403073442
Newsletter Editor	Margaret Carnell	46835268
Publicity Officer		
Librarian	Rob McCosker	46835371

**Stanthorpe Field Naturalists is a group member of  
Granite Borders Landcare.**



Management Committee: President, Vice-  
Presidents, Secretary, Treasurer

**SCALE OF DIFFICULTY FOR WALKS  
ON NATS OUTINGS**

1. Flat, well-formed track, no steps, 5km or less. Clearly signposted. Suitable for wheelchairs with assistance.
2. Formed track. May have gentle hills and some steps. Clearly signposted. No experience required
3. Formed track, some obstacles, 20km or less. May have short steep hills and many steps. Some experience recommended.
4. Rough Track. May be long and very steep with few directional signs. For experienced bushwalkers.
5. Unformed track. Likely to be very rough, very steep and unmarked. For very experienced bushwalkers with specialised skills.

**Coming Up**

Wednesday 23<sup>rd</sup> November:

*Indigenous Plants for Health* with  
Andrew Pengelly

Sunday 27<sup>th</sup> November: Bald Rock with  
Leon and Kerry McCosker

Sunday 4<sup>th</sup> December: Break-up at Kerry  
and Leon McCosker's place, 335  
Amosfield Road, Stanthorpe

**Deadline for next newsletter  
12<sup>th</sup> January 2023**

The following is Leon's outing report for Foxbar Falls. It failed to arrive for the October newsletter, so Graham Rayner kindly did a report for us then and we are now sharing the one Leon did.

**Outing Report - Sunday 2<sup>nd</sup> October – Foxbar Falls**

On an inclement morning several Field Nats arrived at Foxbar Falls Campground where we had morning tea with Alec Harslett, our leader for the walk.

The track to Mt Ferguson started at the campground and proceeded through granite boulders and scrub. We passed through a showy patch of purple *boronia granitica* and some *hibbertia elanta*. Near the top of the mountain Alec showed us a stand of rare Wallangarra White Gums.

The top of Mt Ferguson at 960 metres had great views of the surrounding district. The remnants of the communication tower built by Tim McCulloch lay abandoned. On the way down we saw a huge nest of a wedgetail eagle with a fluffy chick in the nest. Further down we saw a silkpod vine "Giraffe".

Back down to view Foxbar Falls which had a good flow from recent rains and popular with visitors from the campground. On the way back Alec pointed out some of the 22 different varieties of wattle he found on the property.

We arrived back for lunch just in time as it started to rain. We thanked Alec and Denise for an interesting walk on their property.

**Plant List to name some.**

*Acacia montana*, *hibbertia elanta*, *boronia granitica*, tree trigger plant, bootlace orchid, rice flower, heath myrtle, twiggie mint bush, *caladana carnea*, dark mosquito orchid, twining glycine, *hardengeria violacea*, cycads, round-leaved phebalium, flannel flower, *dillwynia sieberi*, common silkpod, clustered poranthera



*Boronia granitica*



On top of Mt Ferguson



The silkpod "Giraffe"

### Pre-Outing Report – Bald Rock in Bald Rock National Park – 27<sup>th</sup> November 2022.

**Leader:** Leon and Kerrie McCosker



We will carpool at Weeroona Park at 9.00 am for the 40 km drive to the Bald Rock National Park. There is a Park Entry Fee of \$8.00 per vehicle but a "Pensioner and Veterans Concession Annual Pass" can be obtained from NSW National Parks and Wildlife Service for free entry. Morning tea will be at the Day Use area

We will walk along the *Bungoona* track and this takes the interesting, graded walk through forest woodland and granite boulders to the top of Bald Rock with great views from the trig lookout. We will have lunch at the top admiring the scenery.

Unfortunately, the rock climb back down the face is closed, due to work to construct a wheelchair accessible track to the base of the rock.

Back at the carpark, another walk to the NSW/Qld border can be taken, this is along a road and on our walk, there were masses of *Red kennedy pea* and *hardenbergia violacea* in flower.

### Christmas Breakup 4<sup>th</sup> December

Our Christmas Break-up on Sunday 4<sup>th</sup> December will be at McCosker's, 335 Amosfield Rd.

Start at 3.00 pm with a cuppa then a walk around our garden or along one or two of our tracks through bushland or along tin mined gully and see what is in flower.

Return to the house for a chat and BYO meal, we'll have a BBQ going.

Come along to end another great year of Stanthorpe Field Naturalist activities.





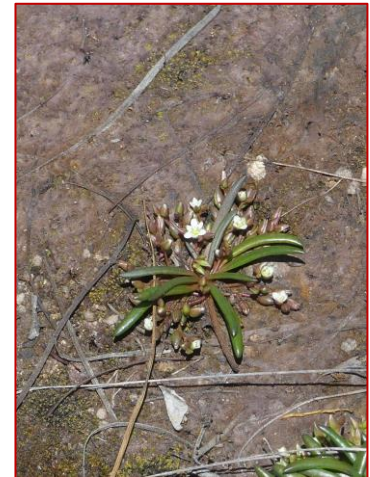
## Outing Report Girraween Rock Slab 30<sup>th</sup> October 2022



Nine Nats met for smoko at the rock slab on the corner of Mt Norman and Pyramids Roads, before walking to the top of the slab. We noticed violets (*Viola betonicifolia*) in the grass where we had smoko and it took a while to get right onto the rock because we were looking at *Pimelea linifolia*, *Dianella glauca* and pink and white rice flower (*Ozothamnus diosmifolius*) before we started to climb. Further up the yellow-flowered *Ozothamnus obcordatus* was

flowering in a rock garden between the rocks.

We saw our first fruit salad plant (*Leionema ambiens*) at the base of a tree and there were mauve daisies (*Brachyscome stuartii*) in the shallow hollows in the rock. The beautiful waxflower (*Philotheca epilosa*, formerly *Eriostemon*) was quite prolific, as was the fringe myrtle (*Calytrix tetragona*). There was still some keraudrenia (*Seringia hillii*) blooming, as well as wrinkled kerrawang (*Commersonia breviseta*). *Editor's Note: I hope nobody refers to me as a wrinkled kerrawang.* It was in this area that we saw nodding blue lilies (*Stypandra glauca*) and a purplish beard orchid (*Calochilus robertsonii*). Kris took a photo of what I thought was a portulaca with a white flower but in *Flora of the Granite Belt* it looks like a *Calandrinia* which belongs to the *Portulacaceae* family. However, the flower looks different from any of the ones in the book.



We headed towards The Signboard, walking through the scrub where there were two *Solanums* in



bloom and the *Clematis glycinoides* was glorious. A leafless climbing orchid was making its way up a tree trunk. Then we came upon a patch of prickly pear that was pulled out and crushed. When we came out onto The Signboard we stopped to admire the view, looking towards the Main Range and Bald Rock.

Where we stopped for lunch Rob noticed *Prostanthera phyllicifolia* growing amongst the rocks and there were flannel flowers (*Actinotus helianthi*) in bloom. The hairy hop bush (*Dodonea hirsute*) was covered in russet seed

Pods. When we were last on The Signboard they were in bloom and we found male and female flowers.

After lunch we made our way carefully down the rather steep slope of The Signboard and walked through masses of ferns to the Peak to Creek track. There were large patches of white and purple *Viola hederacea* amongst the ferns. It was an easy walk along the track, back to the road and down to where we were parked. Some of us had a cuppa before heading home.



Margaret Carnell

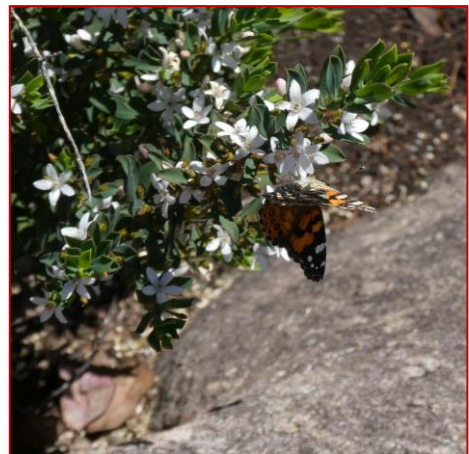
**Birds seen or heard on 30<sup>th</sup> October 2022**

White-throated Gerygone, Red Wattlebird, Yellow-faced Honeyeater, White-eared Honeyeater, Welcome Swallow, Spotted Pardalote, White-throated Treecreeper, Grey Shrike-thrush, Rufous Whistler, Brown Thornbill, Noisy Friarbird. – Peter Haselgrove



**Plant List:** *Acacia venulose* (veiny wattle), *Actinotus helianthin* (flannel flower), *Brachyscome stuartii* (mauve daisy), *Bulbine bulbosa* (bulbine lily), *Calandrenia* sp., *Calochilus robertsonii* (purplish beard orchid), *Caltryx tetragona* (fringe myrtle), *Clematis glycinoides*, *Commersonia brevisetia* (wrinkled kerrawang), Dandelion, *Dianella glauca*, *Diopodium* sp. in bud (hyacinth orchid), *Dodonea hirsute* (hairy hop bush), *Drosera peltate* (tall sundew), *Erythrorchis cassythoides* (leafless climbing orchid), *Kunzea obovate*, *Leonema ambiens* (fruit salad plant), *Leptospermum* sp., *Lomandra*

*longifolia*, *Ozothamnus diosmifolius* (rice flower, both pink & white) *Ozothamnus obcordatus* (rice flower, yellow) *Philotheca epilosa* (waxflower), *Pimelea linifolia*, *Prostanthera phyllicifolia*, *Seringia hillii* (Keraudrenia), *Solanum amblymerum*, *Solanum ditrichum*, *Stachousia viminea*, *Stenanthemum scortechenii*, *Stylidium laricifolium* (tree trigger plant), *Stypandra glauca*, *Viola betonicifolia* (mountain violet), *Viola hederacea* (purple & white),



**Top:** Rice Flower *Ozothamnus diosmifolius*

**Above Left:** *Stypandra glauca*

**Above Centre:** Keraudrenia *Seringia hillii*

**Above Right:** *Philotheca epilosa* with butterfly

**Right:** Holly demonstrating bandage for snake bite at October meeting



**Minutes**  
**Stanthorpe Field Naturalist Club Inc.**  
**26th October 2022**

**Meeting opened::** 7:35 pm

**Attendance and Apologies:** As per Attendance Book

**Minutes:** Minutes from the September Meeting as printed in the Newsletter.

Moved: Kris      Seconded: Loch      Carried

**Business arising from the Minutes:**

1. Invoices from Kris will be held over until Lesley's return in November.
2. Website progress – currently in hand.

**Correspondence:** Read as per Correspondence Book

Moved: Lyn      Seconded: Margaret      Carried

**Financial Report:** As Lesley is away, there is no Financial Report for October, but a new Statement received shows a Bank balance of \$2,356.14 as at 16th October.

Moved: Lyn      Seconded: Lynette      Carried

**Outing Report:** Leon reported on the outing to 'Foxbar' and Mt Ferguson.

**Pre-Outing Report:** Girraween Rock Slab Spring walk. Kris explained where we will be walking, and will check out the condition of the roads prior to the outing.

**October Speaker:** Holly Lister – Snake Bite First Aid. Holly presented a most interesting slide show on 'Envenomation in Australia', then demonstrated how to bandage a snake bite on the leg of 'Borat', her compliant assistant.

**November Presentation:** Andrew Pengelly – Indigenous Plants for Health

**Specimens:** Holly laid out a miniature selection of venomous and poisonous creatures, some hand-outs of her presentation, as well as specific snake bite bandages, a package of which she generously donated for our First Aid Kit.

**Next Meeting:** 23rd November

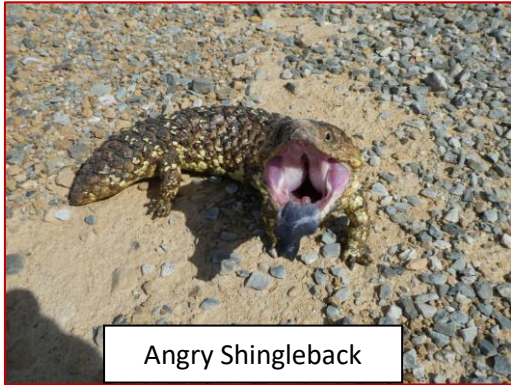
**Meeting Closed:** 8:00 pm



# Spottings



Sue Frances had a visit from Little Bent Wing Bats recently



Angry Shingleback



**Left:**  
Mallee  
Ringnecks  
**Right:** Giant  
Fungus



Thanks to Lock Wilson for these photos taken on a trip to South Australia.

**Left:** King Brown Snake  
**Right:** Red-capped Robin



Handsome Male Emu

